

REPUBLIC
OF IRAQ
MINISTRY
OF
PLANNING

STATISTICAL POCKET BOOK

1960 - 1970

CENTRAL STATISTICAL ORGANIZATION

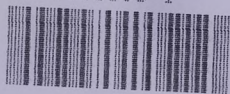
BAGHDAD 1972

b 16066200

UNIVERSITY OF EXETER

30 0111103 1

TELEPEN



REFERENCE ONLY

PRESENTED BY
Iraq Ministry of
Planning

REFERENCE ONLY

IRAQ.
Ministry of
Planning.

136270

136270



REPUBLIC OF IRAQ
MINISTRY OF PLANNING

**STATISTICAL
POCKET BOOK
1960—1970**

BACHDAD

1972

IRA
Mi
Pl

FOREWORD

Three years have passed since the publication of the first statistical handbook and during this period the Central Statistical Organisation have contributed tremendously towards the furthering of official statistics in this Country. It has played a great role in providing data for the National Economic Development Plan 1970—1974. This was made possible by the revised formation of the Central Statistical Organisation and to cover all fields of statistics, within the limitation that we still experience. This handbook is, we hope, to be a scientific guide to research workers, businessmen, and tourists alike, with what it contains on the progress of Iraq for the past ten years.

We have established a procedure in issuing this handbook and we hope that we can manage to continue this publication on an annual basis and that we can improve on the contents and presentation of the present issue.

I wish, in this respect, to express my gratitude to those who made this book possible and apologise to the readers for any short comings in this handbook.

DR. S. AL-SHAIKLY
PRESIDENT
CENTRAL STATISTICAL ORGANIZATION

ABBREVIATIONS

€.	— Centigrade	GDP	= Gross Domestic Product
Mms.	— Millimeters		
Cont.	— Continued	GNP	= Gross National Product
Km.	— Kilometre		
M.	— Metre or Metric	GVA	= Gross Value Added
Mill.	— Million		
000	— Thousand		
I.D.	— Iraqi Dinar		

GDGFCF = Gross Domestic Fixed Capital Formation

GFCF = Gross Fixed Capital Formation

Baghdad.	— Bd.	Anbar	— Ar.
Basrah	— Ba.	Waset	— Wt.
Nienvah	— Nh.	Thi-Qar	— Tr.
Arbil	— Al.	Qadissiya	— Qa.
Kirkuk	— Krk.	Babylon	— Bn.
Diala	— Da.	Maysan	— Mn.
Sulaimaniya	— Sul.	Kerbela	— Ka.
Dhok	— Dhk.	Muthanna	— Mta.

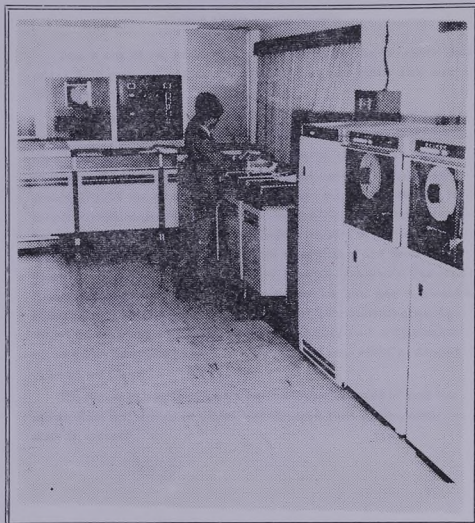
SYMBOLS

*	Tentative Figures
%	Per cent
—	Untestified or Nil

* No parts of this book may be reproduced in any form without reference to its original source.

1

GENERAL INFORMATION



Computer installed in the C.S.O.

GEOGRAPHICAL OUTLINE

Iraq is one of the Arab countries situated in the North—Eastern part of the Arab peninsula with an area of 168,000 square miles. This area is divided into four parts:

The northern mountainous region, the valley region (plain falling between the two rivers); the outer plain, which forms the shepherds pasture region; and the desert region, inhabited mainly by the Nomad Bedouins, situated in the Western part of Iraq. The desert region constitutes approximately 37% of the total Iraq's area, while the potentially cultivable land proportionately ranges from 35—40% of the remaining area, which is estimated at 48 million mishara, of which 16 million mishara in the North depend on rainfall and 32 million mishara in the Central land and Southern part, depend on irrigation through rivers and irrigation machinery. The actual land acreage used for cultivation during the year all over Iraq is estimated at 30 million mishara. At this, the land area suitable for cultivation, accounted for on the basis of per caput becomes approximately 3—3.25% acre (4840 sq. yards) as compared to similar Asian average area which is somewhat 5.0 acre per caput.

The climate in Iraq, in general, is hot in summer, and cold to moderate in winter. Rain falls mainly in winter, whereas most parts of Iraq enjoy clear skies in summer.

AREA & BOUNDARIES OF IRAQ

TEBLE (1)

AREA & LENGTH OF BOUNDARIES	UNIT	
Deserts	(sq. km.)	167000
Mountains	"	92000
Terrace land	"	42500
Plains including lakes and Marshes	"	132500
Half of the Neutral Zone	"	3522
Territorial waters 9 miles depth	"	924
Total Area of Iraq	"	438446
Iraqi-Kuwaiti Boundaries-South	km.	254
Iraqi-Saudi-South west	"	895
Iraqi-Jordanian-west	"	147
Iraqi-Syrian-North west	"	603
Iraqi-Turkish-North	"	305
Iraqi-Iranian-East	"	1315

SOURCE: Directorate General of Survey.

LENGTH OF RIVERS WITHIN THE BOUNDARIES OF IRAQ

TABLE (2)

RIVERS	LENGTH IN Kms.	
	Total	Within Iraq territory
Tigris River (up to Garmat Ali)	1718	1418
Greater Zab	392	150
Lesser Zab	400	250
Udhaim River	230	230
Diala River	386	300
Shatt al-Arab	110	110
Euphrates River (up to Garmat Ali)	2300	1213

WATER RESERVOIRS IN IRAQ

TABLE (3)

RESERVOIR	Capacity of the Reservoir (in million Cubic metres)	Area of the Reservoir in square kms.
Der-Bendi Khan Reservoir	3.0 At a level of 486m.	120
Dokan Reservoir	6.8 At a level of 511m.	265
Thar-Thar Reservoir	85.39 At a level of 65m.	2710
Habbaniya Lake	3.25 At a level of 51m.	430
Abi Dibis	25.75 At a level of 40m.	1810

DAMS & REGULATORS IN IRAQ

TABLE (4)

DAMS & REGULATORS	Type of Dams or Regulator	Reservoir water discharge capacity (in Second)	Height (M)	Length (M)
Hindiya Barrage	Bricks	2900	7.75	237.500
Diala Dam	Concrete	4000	11.00	409
Kut Barrage	Concrete	6000	10.50	507
Al-Majarra Regulator	Concrete	1400	12.00	69
Dibban Regulator	Concrete	400	10.50	42
Warrar Regulator	Concrete	3000	10.00	101
Ramadi Barrage	Concrete	3600	10.00	209
Samarra Barrage	Concrete	7000	12.00	252
Dokan Dam	Concrete	4600	116.50	360
Der-Bendi Khan Dam	Rockfill	11400	140.00	435
Al-Gharraf Regulator	Concrete	450	9.00	77.700
Thar-Thar Regulator	Concrete	9000	11.00	502

Source : Directorate General of Irrigation.

TEMPERATURES, RAINFALL AND HUMIDITY

TABLE (5)

YEAR	RAINFALL (mms)			Temperatures	
	Baghdad	Mosul	Basra	Baghdad	
				Max·	Min·
1960	78.4	315.0	113.1	31.8	16.5
1961	213.3	317.4	174.4	30.0	14.8
1962	176.5	270.3	90.6	31.9	15.5
1963	155.0	605.5	100.2	30.4	15.2
1964	92.3	271.8	31.9	29.1	14.0
1965	136.4	361.8	85.0	30.1	15.2
1966	129.6	294.9	98.8	31.6	16.1
1967	130.4	471.1	156.5	28.9	14.6
1968	255.9	408.6	98.8	29.8	15.3
1969	119.6	531.7	175.9	30.4	16.1
1970	126.9	275.4	148.4	31.0	14.1

SOURCE: Annual Abstract of Statistics

TEMPERATURES (C°)				Relative Humidity (%)		
Mosul		Basra		Baghdad	Mosul	Basra
Max·	Min·	Max·	Min·			
29.0	11.7	32.1	17.9	42	57	58
28.3	11.2	31.0	17.0	49	61	55
29.7	11.8	33.0	18.3	45	57	55
27.6	13.0	31.6	18.1	48	57	60
28.1	11.8	30.9	17.3	42	50	52
27.7	12.7	31.8	18.1	44	56	55
29.3	14.2	32.5	18.4	44	51	60
26.5	12.8	30.4	17.1	46	56	62
27.6	13.4	31.3	18.3	47	55	64
27.5	13.5	31.0	19.5	45	57	65
28.8	13.3	32.1	17.7	44	49	56

YEARLY PRESSURE AVERAGE VALUES (Millibars at M.S.L.) 60—1970

TABLE (6)

Year	BAGHDAD			MOSUL
	AT 6A·M·	AT 9 A·M·	AT 3P·M·	AT 6A·M·
1960	1011.1	1012.2	1010.2	1013.5
1961	1011.0	1012.0	1010.0	1012.8
1962	1010.7	1011.8	1009.8	1013.0
1963	1010.7	1011.7	1009.8	1012.4
1964	1011.1	1011.0	1010.3	1012.7
1965	1011.2	1012.3	1010.4	1013.5
1966	1011.0	1012.0	1010.2	1012.7
1967	1011.1	1012.1	1012.2	1012.7
1968	1011.2	1012.2	1010.4	1012.9
1969	1010.8	1011.9	1010.0	1012.6
1970	1010.9	1012.5	1010.0	1012.6

Source: Annual Abstract of Statistics

BASRA				
AT 9A·M·	AT 3P·M·	AT 6A·M·	AT 9A·M·	AT 3P·M·
1013.6	1010.9	1010.1	1011.3	1009.2
1013.3	1010.4	1009.8	1010.9	1009.0
1013.3	1010.4	1010.1	1011.3	1009.4
1012.8	1010.2	1010.3	1011.5	1009.7
1013.2	1010.4	1010.7	1012.8	1009.9
1010.8	1011.2	1010.6	1011.8	1009.9
1013.2	1010.3	1010.2	1011.3	1009.5
1013.1	1010.4	1010.4	1011.0	1009.7
1013.6	1010.8	1010.4	1011.6	1009.7
1013.2	1010.6	1010.0	1011.3	1009.5
1013.3	1010.4	1009.6	1001.0	1009.1

WEIGHTS & MEASURES

LOCAL WEIGHTS

- Ton = 40 Mann (Baghdad)
Mann (Baghdad) = 25 Kgs = 6.25 Hukka
Ton = 240 Hukka (Baghdad)
Ton = 781 Hukka (Istanbul)
Wazna (Baghdad) = 25 Hukka
Wazna (Baghdad) = 4 Mann (Baghdad)
Hukka (Istanbul) = 1.28 Kgs
Mann (Istanbul) = 7.68 Kgs
Hukka (Baghdad) = 4Kgs, Hukka (Mosul) = 2.048 Kgs
Bale of Ginned Cotton = 177Kgs
Kintar = 274.47Kgs
Kintar = 604.273 Pounds
Woqiyah = 128 Grammes

METRIC MEASURES AND EQUIVALENT WEIGHTS

- 1 Gramme (g) = 5 metric carats = 15.4324gr
1 Kilogram (kg) = 2.2046 lb = 35.274 oz
1 Quintal (q) = 100kg = 1.9684 cwt = 220.46 lb
1 M.Ton = 1000kg = 0.9842 long ton = 1.1023 U.S. tons
Pound = 454 Grammes
Kg = 2.2 Pounds
Metric Ton = 2204.623 Pounds
Long Ton (British) = 2240 Pounds
Cubic Metre = 220 Gallons

LENGTH

- 1 Metre (m) = 1.0936 yd = 39.37in = 3.2808ft
1 Kilometre (km) = 0.62137 mile ($\frac{5}{8}$ mile approx)
1 Kilometre = 49.71 chains = 4.970974 furlongs
Small Unit: 1 Micron (or Micrometre) = 0.001mm

SURFACE OR AREA

- 1 Sq. Centimetre = 100 sq. mm = 0.155sq. in.
1 Sq. Metre = 1.196sq. yd = 10.7639sq. ft
1 Acre = 100sq. metre = 3.9537sq. rods
1 Square kilometre = 0.386103sq. mile

BRITISH MEASURES AND EQUIVALENT WEIGHTS

Avoirdupois (Av)

- 1 Pound (lb) = 16 Ounces (oz) = 7000 Grains (gr)
1 Pound = 0.4536 Kilogram (kg)
1 Ounce = 16 drams (dr) = 437.5 gr = 28.35 grammes (g)
1 Quarter (qr) = 2 stones (st) = 28 lb = 12.7 kg
1 Ton (2240lb) = 20 british kintar = 1.016 metric tonne

LENGTH

- 1 Yard (yd) = 3 feet (ft) = 36 inches (in) = 0.9144m
1 Inch = 2.54 cm; 1 foot = 0.3048m
1 Rod (pole or perch) = 5.5yd = 5.0292m
1 Chain = 4 rods = 100 links
1 Mile = 80 chains = 8 furlongs = 1.609km
1 Nautical Mile = 6080 ft.

SURFACE OR AREA

- 1 Sq. Yard = 9 sq. ft = 1296 sq. in = 0.836sq. m
1 Acre = 4 roods = 10sq. Chains = 4840sq. yd.
1 sq. Mile = 640 acres = 258.99 hectares
1 sq. Inch = 645.16sq. mm; 100sq. Feet = 9.29sq. m

THERMOMETER CONVERSIONS

Fahrenheit to Centigrade:

Subtract 32, then multiply by $\frac{5}{9}$

Centigrade to Fahrenheit:

Multiply by $\frac{9}{5}$ then add 32

2

POPULATION



ESTIMATED POPULATION OF IRAQ & ITS INCREASES

TABLE (7)

Year	Male	Female	Total	Increase
1960	3478213	3450797	6929010	—
1961	3589205	3553629	7142834	213824
1962	3705433	3661277	7366710	223876
1963	3827150	3773962	7601112	234402
1964	3954619	3891917	7846536	245424
1965 *	4084936	4012294	8097230	250694
1966	4216083	4143578	8359661	262431
1967	4352554	4280155	8632709	273048
1968	4493382	4421075	8914457	281748
1969	4638709	4566476	9205185	290728
1970	4785250	4713112	9498362	293177

NOTES:

- 1- Including Iraqi's abroad.
- 2- Figure for 1965 is a census figure.

IRAQ'S POPULATION DENSITY

TABLE (8)

Muhafadha	*1965 Total population	Area (in square Km.)	Density (in square Km.)
Ninevah	888601	50881	17
Sulaimaniya	399768	11993	32
Arbil	356293	15315	23
Kirkuk	473626	19543	24
Diala	397363	15742	25
Baghdad	2045375	19922	103
Anbar	307012	137969	2
Babylon	448168	6889	65
Kerbela	339854	7170	47
Waset	334331	14814	23
Qadissiya	543228	83343	7
Thi-Qar	498850	14452	35
Maysan	345367	17945	19
Basra	669479	18022	37
Total	8047415	484000	18

(*) Excluding Iraqis Abroad.

IRAQ'S POPULATION ACCORDING TO RESIDENCE IN RURAL & URBAN AREAS

TABLE (9)

1 M A L E					
Year	Urban	Rural	Total	%	
1947	812442	1444903	2257345	46.9	
1957	1249697	1892835	3142532	49.9	
1965	2092155	1962133	4054288	50.4	
1970	2767346	1986888	4754234	50.4	
2 F E M A L E					
Urban	Rural	Total	%		Total
921385	1637455	2558840	53.1		4816185
1195525	1960919	3156444	50.1		6298976
2019644	1973483	3993127	49.6		8047415
2685089	2000775	4685864	49.6		9440098

Notes: 1— Excluding Iraqi's abroad.

2— Data for 1970 are estimated by U.N. Expert (ueda).

IRAQ'S POPULATION DISTRIBUTED ACCORDING TO SEX &
AGE GROUPS FOR 1970

TABLE (10)

Age Groups	Male	Female	Total	%
Less than 1 year	207589	200710	408299	4.3
1— 4	718548	695870	1409418	14.9
5— 9	759358	730205	1489563	15.8
10—14	616427	595219	1211646	12.8
15—19	498976	484659	983635	10.4
20—24	340924	333697	674621	7.2
25—29	267124	263106	530230	5.6
30—34	251663	249469	501132	5.3
35—39	234497	234062	468559	5.0
40—44	206159	207682	413841	4.4
45—49	163305	166354	329659	3.5
50—54	132157	136222	268379	2.8
55—59	111671	116661	228332	2.4
60—64	83574	88562	172136	1.8
65—69	64756	69572	134328	1.4
70—79	78138	85392	163530	1.8
Over 80 years	23468	28422	52790	0.6
	4754234	4685864	9440098	100.0

SOURCE: Demographic and Manpower Statistics Department

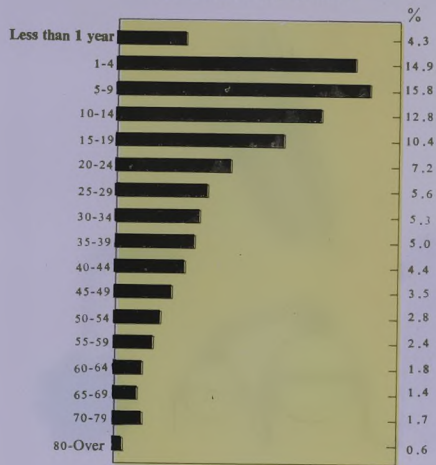
GAINFULLY EMPLOYED POPULATION, DISTRIBUTED BY ECO-
NOMIC SECTORS, 1960—1970

TABLE (11)

1 Year	Agriculture	Mining	Manufacturing	Elec. Gas Water	Construction	Trade
1960	733900	11000	130000	11800	58000	100000
1961	780500	11500	130000	11900	58000	105000
1962	827000	12000	130000	12000	50000	110000
1963	873500	12500	130000	12000	43100	115000
1964	920100	13000	130000	12000	47200	120000
1965	1009600	13500	135000	12200	61000	125000
1966	1103100	14000	140000	12400	70000	130000
1967	1177400	14500	140000	12600	59100	135000
1968	1253600	15000	146000	12800	66000	140000
1969	1306400	15500	148000	12900	67000	145000
1970	1385700	16000	150000	13000	67000	150000
2	Transport	Services	Others	Total Employed	Population un-employed	Labour force
110000	245000	200000	1599700	31400	1631100	
114000	250000	210000	1670900	63600	1734500	
117000	255000	215000	1728000	109800	1837800	
121000	260000	220000	1787100	154100	1941200	
125000	265000	220000	1852100	192500	2044600	
129000	270000	230000	1985300	162700	2148000	
133000	275000	230000	2107500	143800	2251300	
137000	285000	240000	2200600	154100	2354700	
140000	290000	260000	2323400	134700	2458100	
143000	295000	270000	2402800	158700	2561500	
150000	300000	275000	2506700	158200	2664900	

Source: Report on-Manpower in Iraq— by NILS STORM, UN/Manpower Expert

THE DISTRIBUTION OF POPULATION
ACCORDING TO AGE GROUPS



3

NATIONAL INCOME



**IRAQI PER CAPITA INCOME AT CURRENT AND
CONSTANT PRICES (1966 Prices) for 1965—1969**

TABLE (12)

Year	No. of Population	National Income at current prices (mill. ID's)	per Capita Income at current prices (ID's)	National Income at constant prices (1966 prices) (mill. ID's)	per Capita Income at constant prices (1966 prices) ID's
1965	8097230	659.29	81.4	685.33	84.6
1966	8359661	705.53	84.4	705.53	84.4
1967	8632709	714.79	82.8	658.19	76.2
1968	8914457	782.91	87.8	749.20	84.0
1969	9205185	826.81	89.8	780.01	84.7

Source: C. S. O. - National Accounts Dept. Preliminary Report.

EXPENDITURE ON GROSS DOMESTIC PRODUCT 1965-1969
(at current prices) in mill. IDs.

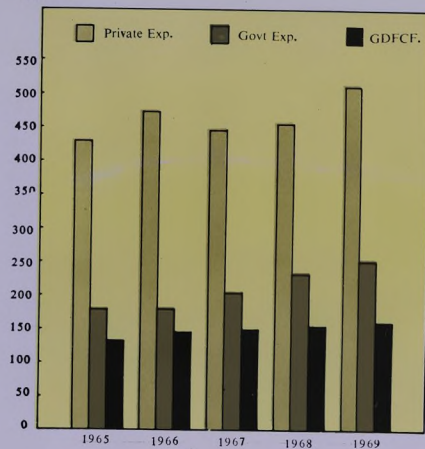
TABLE (13)

DETAILS	1965	1966	1967	1968	1969
1- Private consumption expenditure	429.1	472.4	446.9	455.4	511.6
2- Government Consumption expenditure	177.2	180.1	202.5	233.8	251.6
3- Gross domestic fixed capital formation	131.4	144.7	149.9	154.2	159.0
4- Exports of goods & services	344.6	364.4	326.1	404.4	407.5
5- Less Imports of goods and services	205.3	221.0	183.2	191.7	208.4
Expenditure on gross domestic product (at market prices)	877.0	940.6	942.2	1056.1	1121.3
6- Net factors Income from abroad	-129.6	-137.7	-122.6	-156.8	-159.4
7- Less Indirect taxes	46.0	52.4	59.5	66.4	82.4
8- Plus subsidies					
9- Less provisions for the consumption of fixed capital	42.1	45.0	45.3	50.0	52.7
Net national product at-factor cost = National Income	659.3	705.5	714.8	782.9	826.8

Source: C. S. O. National Accounts Dept. (preliminary Report)

EXPENDITURE ON GDP, 1965-1969
(AT CURRENT PRICES)

Mill IDs.



DISTRIBUTION OF GROSS DOMESTIC PRODUCT BY ECONOMIC SECTORS AT CURRENT PRICE FOR THE YEARS 60—69 (Mill. I.Ds.)
TABLE (14)

1	Mining & Quarrying				
	Year	Agriculture, Forestry & Fishing	Crude Oil	Others	Total
	1960	97.84	208.07	1.68	209.75
	1961	116.98	209.03	2.15	211.18
	1962	140.38	210.23	1.86	212.09
	1963	109.30	242.50	1.90	244.40
	1964	148.10	266.90	1.90	268.80
	1965*	162.70	283.62	4.90	288.52
	1966*	172.73	298.66	5.77	304.43
	1967*	181.39	264.41	5.44	269.85
	1968*	190.46	328.16	5.65	333.81
	1969*	198.08	333.08	5.95	339.03

2	Manufacturing				
	Petroleum Products	Others	Total	Constructions	Electricity, Water & Gas
	7.79	46.61	54.40	23.08	3.62
	9.39	50.12	59.51	23.88	4.96
	9.67	55.41	65.08	19.64	5.54
	10.10	54.10	64.20	20.30	5.20
	10.40	53.00	63.40	18.70	7.70
	13.26	52.53	65.79	23.93	9.80
	14.27	57.63	71.90	27.91	12.35
	14.58	68.42	83.00	26.69	13.38
	16.41	71.01	87.42	29.36	15.79
	17.72	76.70	94.42	32.29	18.14

Con.

3	Transport Communication & Storage	Wholesale & Retail Trade	Banking, Insurance & Real Estate agents	Ownership of Dwellings	Public Administration & Defence
39.72		32.55	8.69	11.89	45.71
45.95		36.58	11.06	12.13	51.46
47.02		38.56	11.38	12.45	59.76
48.80		35.90	12.80	12.40	67.40
54.90		44.50	7.70	14.80	81.20
56.10		50.65	12.03	14.19	97.85
57.82		56.43	14.60	14.54	104.17
60.60		56.55	14.73	15.10	105.54
64.58		60.28	15.04	15.85	116.53
67.68		64.26	16.26	16.65	128.56

4	Gross Domestic Product at Factor Cost	Net factors Income From Abroad	Gross National Product at Factor Cost	Consumption of fixed capital	National Product at Factor Cost= (National Income)
38.11	565.36	- 95.33	470.03	32.90	437.13
41.37	615.06	- 94.20	520.86	36.62	484.24
46.52	658.42	- 93.87	564.55	38.06	526.49
49.90	670.60	-108.10	562.50	37.20	525.30
51.40	761.20	-123.70	637.50	41.70	595.80
49.42	830.98	-129.60	701.38	42.09	659.29
51.33	888.21	-137.70	750.51	44.98	705.53
55.86	882.69	-122.60	760.09	45.30	714.79
60.59	989.71	-156.80	832.91	50.00	782.91
63.58	1038.95	-159.40	879.55	52.74	826.81

(*) Provisional figures.

Source: National Accounts Department, C.S.O.

DISTRIBUTION OF GROSS DOMESTIC PRODUCT BY ECONOMIC SECTORS AT 1966 CONSTANT PRICES FOR THE YEARS 65-1969 (Mill I.Ds.)

TABLE (15)

1 Year	Agriculture, Forestry & Fishing	Mining & Quarrying		
		Crude Oil	Others	Total
1965	169.13	294.82	5.09	299.91
1966	172.73	298.66	5.77	304.43
1967	167.03	243.47	5.01	248.48
1968	182.26	314.03	5.41	319.44
1969	186.87	314.23	5.61	319.84

2	Manufacturing			Constructions	Electricity, Water & Gas
	Petroleum Products	Others	Total		
13.78	54.60	68.38	24.88	10.19	
14.27	57.63	71.90	27.91	12.35	
13.43	63.00	76.43	24.58	12.32	
15.71	67.95	83.66	28.09	15.11	
16.72	72.36	89.08	30.46	17.11	

Con.

3	Transport Communication & Storage	Wholesale & Retail Trade	Banking * Insurance & Real Estate agents	Ownership of Dwellings	Public Administration & Defence
	58.31	52.65	12.51	14.75	101.71
	57.82	56.43	14.60	14.54	104.17
	55.80	52.07	13.56	13.90	97.18
	61.80	57.68	14.39	15.17	111.51
	63.85	60.62	15.34	15.71	121.28

4	Gross Domestic Product at Factor Cost	Net factor Income From Abroad	Gross National Product at Factor Cost	Consumption of fixed Capital	National Product at Factor Cost =(National Income)
	51.38	-134.72	729.08	43.75	685.33
	51.33	-137.70	750.51	44.98	705.53
	51.44	-112.89	699.90	41.71	658.19
	57.98	-150.05	797.04	47.84	749.20
	59.98	-150.38	829.76	49.75	780.01

* Provisional Figures

Source: C. S. O. National Accounts Dept.

4

CAPITAL FORMATION

GROSS DOMESTIC FIXED CAPITAL FORMATION ACCORDING
TO PUBLIC AND PRIVATE SECTORS

TABLE (16) at Current Prices (in mill. I.Ds.)

Year	Public sector 1	Private sector 2	Total 3	1:3 %	2:3 %
1960	51.9	68.3	120.2	43.1	56.9
1961	59.6	77.6	137.2	43.4	56.6
1962	58.1	61.1	119.2	48.7	51.3
1963	67.5	52.4	119.9	56.2	43.8
1964	93.1	54.5	147.6	63.0	37.0
1965	70.6	60.8	131.4	53.7	46.3
1966	79.2	65.5	144.7	54.7	45.3
1967	93.4	56.5	149.9	62.3	37.7
1968	90.3	63.9	154.2	58.6	41.4
1969	41.4	67.6	159.0	57.5	42.5

at 1966 Constant Prices (in mill.I.Ds.)					
Year	Public sector	Private sector	Total	1:3	2:3
1960	53.0	69.8	122.8	43.2	56.8
1961	62.4	81.3	143.7	43.4	56.6
1962	60.0	63.1	123.1	48.7	51.3
1963	67.4	52.3	119.7	56.3	43.7
1964	91.1	53.3	144.4	63.1	36.9
1965	73.5	63.3	136.8	53.7	46.3
1966	79.2	65.5	144.7	54.7	45.3
1967	92.8	56.1	148.9	62.3	37.7
1968	89.0	63.0	152.0	58.6	41.4
1969	89.4	66.2	155.6	57.5	42.5

Note: Government Administration includes some government services which could not be separated during the period 1963—1969.

Source: National Accounts Department (Preliminary Report)

GROSS DOMESTIC FIXED CAPITAL FORMATION ACCORDING
TO ECONOMIC ACTIVITIES AT CURRENT PRICES (in mill. IDs.)

TABLE (17)

SECTOR	1960	1961	1962	1963
Agriculture	12.6	14.9	11.2	7.9
Mining & Quarrying	23.1	22.8	5.0	1.1
Manufacturing Industries	9.0	12.8	20.9	21.8
Construction	1.3	1.9	1.6	1.5
Electricity, Water & Gas	7.8	5.0	4.9	0.5
Transport, Communication & Storage	25.5	32.1	28.9	24.4
Wholesale & Retail trade	2.2	3.0	2.9	4.8
Banking & Insurance	0.5	0.9	1.2	0.1
Ownership of Dwellings	23.1	25.8	24.2	22.4
Public Administration*	3.2	4.1	5.1	20.7
Services	11.9	13.9	13.3	14.7
Total	120.2	137.2	119.2	119.9

(*) Government Administration includes certain Government services which could not be separated during the period 1963—1969.

Source: C-S-O. — National Accounts Dept. Preliminary Report.

1964	1965	1966	1967	1968	1969
11.3	11.0	13.9	18.4	20.7	17.5
0.5	0.6	0.4	0.3	0.5	0.5
27.0	26.4	36.4	33.5	34.8	35.9
1.4	1.8	2.1	2.0	2.2	2.2
1.4	7.0	5.2	16.6	10.5	10.8
25.2	20.1	23.0	19.6	17.6	22.1
5.6	6.6	6.8	6.4	7.1	7.3
0.3	1.1	0.2	0.2	0.6	0.7
25.0	27.1	29.1	24.1	29.0	29.9
24.1	18.3	19.9	19.0	20.7	21.3
25.8	11.4	7.7	9.8	10.5	10.8
147.6	131.4	144.7	149.9	154.2	159.0

GROSS DOMESTIC FIXED CAPITAL FORMATION ACCORDING TO
ECONOMIC ACTIVITIES AT 1966 CONSTANT PRICES (in mill. IDs.)

TABLE (18)

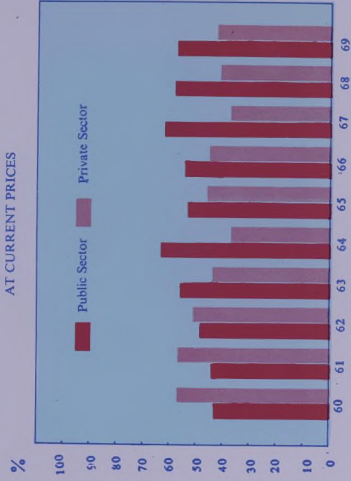
SECTOR	1960	1961	1962	1963
Agriculture	12.8	15.6	11.6	7.9
Mining & Quarrying	23.6	23.9	5.2	1.1
Manufacturing Industries	9.2	13.4	21.6	21.8
Construction	1.3	2.0	1.7	1.5
Electricity, Water & Gas	8.0	5.2	5.1	0.5
Transport, Communication & Storage	26.0	33.6	29.9	24.4
Wholesale & Retail trade	2.2	3.1	3.0	4.8
Banking & Insurance	0.5	0.9	1.2	0.1
Ownership of Dwellings	23.6	27.0	25.0	22.4
Public Administration*	3.3	4.3	5.3	20.7
Services	12.2	14.6	13.7	14.7
Total	122.7	143.6	123.3	119.9

1964	1965	1966	1967	1968	1969
11.1	11.4	13.9	18.3	20.4	17.1
0.5	0.6	0.4	0.3	0.5	0.5
26.4	27.4	36.4	33.2	34.3	35.1
1.4	1.9	2.1	2.0	2.2	2.2
1.4	7.3	5.2	16.5	10.3	10.6
24.7	20.9	23.0	19.5	17.3	21.6
5.5	6.9	6.8	6.4	7.0	7.2
0.3	1.1	0.2	0.2	0.6	0.7
24.5	28.2	29.1	23.9	28.6	29.3
23.6	19.0	19.9	18.9	20.4	20.8
25.3	11.8	7.7	9.8	10.3	10.6
144.7	136.5	144.7	149.0	151.9	155.7

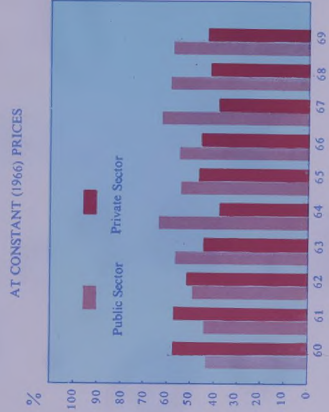
(*) Government Administration includes certain Government services which could not be separated during the period 1963—1969.

Source: C.S.O. — National Accounts Dept. Preliminary Report.

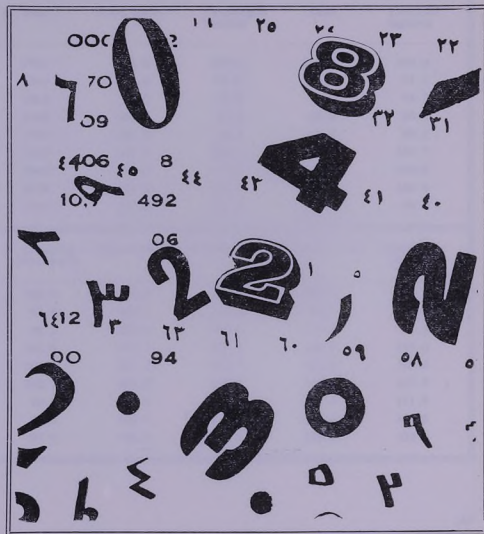
PERCENTAGE CONTRIBUTION OF PUBLIC & PRIVATE SECTORS TO
THE GDFCF, 1960-1970
AT CURRENT PRICES



PERCENTAGE CONTRIBUTION OF PUBLIC & PRIVATE SECTORS TO
THE GDFCF, 1960-1970



INDEX NUMBERS



MONTHLY AVERAGES OF CONSUMERS' PRICE INDEX NO. IN
BAGHDAD CITY AND ITS ENVIRONS FOR 1963—1970 (1963=100)

TABLE (19)

1 Year	Food stuffs	Clothing & Textiles	Rent	Fuel and lighting
1963	100.0	100.0	100.0	100.0
1964	99.6	96.9	94.6	97.2
1965	99.0	90.9	94.6	95.7
1966	100.6	90.3	94.6	96.6
1967	103.2	93.2	100.2	99.2
1968	103.7	106.5	94.7	103.7
1969	110.9	113.9	97.6	106.8
1970	115.2	121.2	102.9	108.4
1971	120.0	131.4	104.7	99.0

2 Cleaning Materials	Cigarettes	Furniture	Miscellaneous	General Index No.
100.0	100.0	100.0	100.0	100.0
97.2	100.0	101.6	98.1	98.7
96.2	100.0	100.8	101.1	98.3
102.0	101.5	101.2	106.9	103.0
104.5	103.0	102.7	113.0	103.6
102.7	103.2	109.8	119.4	105.9
96.7	106.1	121.8	123.5	111.9
99.3	121.4	130.8	127.6	116.8
93.9	126.6	146.9	129.8	121.0

MONTHLY AVERAGES OF WHOLESALE PRICE INDEX NO. IN
BAGHDAD FOR 1962—1970 (Base Year 1962=100)

TABLE (20)

Year	Food stuffs	Textiles	Construction Materials	General In- dex No.
1962	100.0	100.0	100.0	100.0
1963	111.3	102.7	96.4	108.0
1964	114.1	102.4	97.8	110.1
1965	109.3	101.7	99.1	106.7
1966	109.0	99.9	99.0	106.2
1967	120.5	97.9	99.1	114.0
1968	111.8	102.9	98.1	108.6
1969	114.3	107.2	100.8	111.5
1970	125.9	115.5	110.8	122.3
1971	130.9	141.4	110.0	130.3

INDEX NO. OF INDUSTRIAL PRODUCTION FOR 1962—1970 (62=100)

TABLE (21)

Year	Food- stuffs, Bevera- ges & Tobacco	Textiles	Cloth- ing & Shoes	Oil Re- fining	Chemical Indus- try	Non- Metal- lic In- dustry	Miscell- aneous	General Index No.
1962	100.0	100.0	100.0	100.0	100.0	100.0	100.0	100.0
1963	101.6	100.9	103.8	99.7	109.3	94.2	102.7	100.7
1964	109.6	110.6	111.2	115.5	135.0	112.3	110.0	112.8
1965	113.5	121.1	128.6	121.4	151.0	122.1	102.7	119.4
1966	119.1	120.1	140.1	125.2	140.6	126.3	103.2	123.1
1967	109.5	120.9	149.0	133.7	161.4	132.7	92.1	123.6
1968	112.7	118.1	161.0	147.1	169.7	137.5	99.9	130.1
1969	120.8	137.5	168.4	159.9	188.8	139.4	127.6	141.3
1970	123.6	161.0	205.9	163.3	206.9	140.6	163.1	151.6

INDEX NO. OF WORKERS IN THE INDUSTRIAL
& CONSTRUCTIONAL SECTORS (1962=100)

TABLE (22)

Sector Industry	1962	1963	1964	1965	1966	1967	1968
A. Industrial Sector	100.0	96.8	102.7	107.0	108.7	113.7	112.2
1- Miniral large enterprises	100.0	91.9	94.8	92.4	91.7	89.8	74.3
2- Oil refining large enterprises	100.0	101.5	103.1	104.8	107.6	110.1	120.5
3- Water & Electricity	100.0	102.4	108.7	115.5	120.9	127.5	132.1
a- Large enterprises	100.0	101.8	108.7	116.2	121.7	128.7	132.9
b- Small enterprises	100.0	133.5	108.3	75.2	78.3	60.6	85.8
4- Repair	100.0	101.9	108.4	114.3	120.9	130.8	134.2
a- Large enterprises	100.0	102.9	109.6	114.8	122.6	129.0	135.4
b- Small enterprises	100.0	95.0	100.0	110.7	108.2	143.8	125.9
5- Manufacturing Industries	100.0	97.0	104.9	112.1	113.3	121.0	124.2
a- Large enterprises	100.0	97.1	102.5	108.0	113.4	116.5	121.4
b- Small Industries	100.0	96.6	115.5	130.7	113.1	141.4	137.0
B. Constructional Sector	100.0	87.3	94.6	124.0	145.3	126.8	139.0
1- Government	100.0	72.5	70.0	105.2	132.1	140.3	151.8
2- Private	100.0	101.1	117.5	141.7	157.9	114.6	127.6
3- Private Sector and Oil Companies	100.0	97.3	113.3	135.6	150.6	109.2	121.1
General Index No. for Workers	100.0	94.2	100.5	111.7	118.9	117.3	119.7

INDEX NO. OF WAGES IN INDUSTRIAL & CONSTRUCTIONAL
SECTORS (1962=100)

TABLE (23)

Sector Industry	1962	1963	1964	1965	1966	1967	1968
A. Industrial Sector	100.0	102.9	105.3	107.4	107.8	111.4	116.4
1- Mineral large enterprises	100.0	100.3	104.1	107.9	108.7	113.1	126.2
2- Oil refining large enterprises	100.0	104.5	105.0	108.1	109.1	113.2	114.3
3- Water & Electricity	100.0	103.7	100.7	101.8	103.4	104.6	108.2
a- Large enterprises	100.0	103.7	100.6	101.8	103.4	104.5	108.1
b- Small enterprises	100.0	103.3	108.6	104.0	105.6	109.2	115.9
4- Repairs	100.0	104.4	107.6	107.3	106.8	114.6	116.9
a- Large enterprises	100.0	105.5	108.6	107.9	107.2	114.8	115.9
b- Small enterprises	100.0	96.4	100.4	102.8	103.7	112.9	124.2
5- Manufacturing Industries	100.0	103.7	106.4	108.2	108.2	110.9	112.6
a- Large enterprises	100.0	104.3	107.0	108.2	108.2	111.1	112.6
b- Small Industries	100.0	101.2	103.8	108.2	108.1	109.8	112.8
B. Constructional Sector	100.0	102.9	103.4	104.7	110.4	117.5	123.0
1- Government	100.0	104.4	102.5	102.5	107.9	117.7	118.4
2- Private	100.0	101.5	104.2	106.8	112.7	117.4	127.4
3- Private Sector and Oil Companies	100.0	101.5	103.4	106.1	112.0	116.5	126.4
General Index No. for Wages	100.0	102.9	104.8	106.7	108.5	113.1	118.3

INDEX NO. OF THE COSTS AND QUANTITIES OF MATERIALS
CONSUMED IN THE CONSTRUCTIONAL SECTOR (1961=100)

TABLE (24)

Sector	1961	1962	1963
1. Private			
Value	100.0	97.3	96.0
Quantity	100.0	105.9	111.6
2. Governmental			
Value	100.0	90.2	64.6
Quantity	100.0	88.1	65.2
3. Oil Companies			
Value	100.0	156.9	108.4
Quantity	100.0	99.9	85.0
All Sectors			
Value	100.0	94.3	80.2
Quantity	100.0	98.5	92.2

	1964	1965	1966	1967	1968	1969
	112.5	128.4	143.5	107.3	141.5	156.5
	127.7	145.2	160.8	118.0	144.4	154.0
	51.7	73.1	81.1	91.9	103.5	110.1
	55.0	78.2	81.2	89.4	89.4	103.7
	125.0	101.7	94.7	76.4	37.1	74.2
	130.1	112.1	97.5	75.9	33.2	80.6
	84.8	101.8	113.5	96.3	120.0	132.5
	97.7	117.3	127.4	105.9	125.7	134.0

INDEX NO. OF VARIATION IN THE YIELD PER DONUM
OF CULTIVATED LANDS* (1960=100)

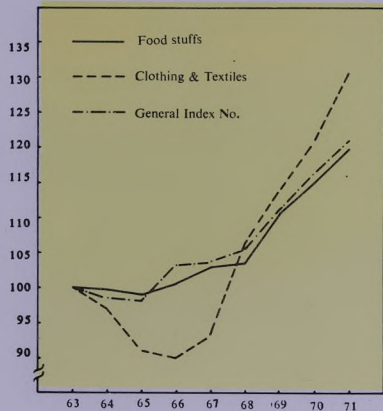
TABLE (25)

Index No.	1960	1961	1962	1963
Field Crops	100.0	117.6	127.3	103.6
a- Winter Crops	100.0	122.4	131.9	104.6
b- Summer	100.0	76.7	88.1	95.1
b- Summer Crops				
Vegetables	100.0	98.6	106.8	107.5
a- Winter Crops	100.0	123.6	156.2	157.5
b- Summer Crops	100.0	93.6	96.9	97.5
Dates	100.0	109.5	126.0	101.6

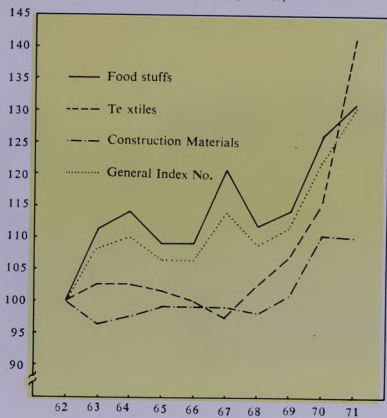
Source: Index numbers and Prices Department.

1964	1965	1966	1967	1968	1969
90.9	110.1	98.6	106.3	121.3	128.3
88.8	109.8	97.6	103.1	119.0	127.8
108.5	112.6	107.3	133.9	141.3	133.3
106.2	115.0	113.3	126.5	114.4	116.2
112.1	169.0	159.2	181.6	161.9	158.7
105.0	104.2	104.1	115.5	104.9	107.7
92.8	56.4	73.9	75.2	60.1	121.7

MONTHLY AVERAGES OF CONSUMER'S INDEX NO-IV
BAGHDAD CITY AND ITS ENVIRONS. (1963=100)



MONTHLY AVERAGES OF WHOLESALE PRICE
INDEX NO. IN BAGHDAD FOR 1962-1971
(BASE YEAR 1962 = 100)



6

AGRICULTURE



AREA OF CULTIVATED LANDS IN IRAQ (in Thousand Donums)

TABLE (26)

Crops	1969		1970	
	Area Cultivated	% Cultivated	Area Cultivated	% Cultivated
Cereals	13814	85.7	12849	85.0
Industrial Crops	450	2.6	479	3.0
Other Crops	285	1.7	290	2.0
Vegetables	769	5.0	756	5.0
Total	15318	95.0	14374	95.0
Orchards of palm trees	582	4.0	582	4.0
Orchards of fruits Vine trees	202	1.0	202	1.0
Total area of cultivated lands in Iraq. Annual	16102	100	15158	100
Area of land left unexploited during the year	14044	—	14988	—
Area of exploited lands during the year	30146	—	30146	—
Total area of cultivated lands in Iraq	48000	—	48000	—

Source: Ministry of Agriculture.

PRINCIPAL WINTER GROPS

TABLE (27)

KIND OF GROP	1961	1962	1963
Wheat*			
Cultivated Area (000' Donums)	5385	6363	6818
Production (000' tons)	857	1085	873
Yield per Donum (Kilo)	159	171	128
Barley*			
Cultivated Area (000' Donums)	4164	4758	4874
Production (000' tons)	911	1125	947
Yield per Donum (Kilo)	219	237	194
Linseed			
Cultivated Area (000' Donums)	36	48	47
Production (000' tons)	5	7	6
Yield per Donum (Kilo)	134	139	135
Lentils			
Cultivated Area (000' Donums)	47	45	39
Production (000' tons)	7	8	6
Yield per Donum (Kilo)	156	168	159
Vetch Hurtman			
Cultivated Area (000' Donums)	4	4	4
Production (in' tons)	571	722	643
Yield per Donum (Koil)	157	193	156
Dry Broad Beans			
Cultivated Area (000' Donums)	50	47	50
Production (000' tons)	15	15	14
Yield per Donum (Kilo)	309	313	280
Chick peas			
Cultivated Area (000' Donums)	27	25	17
Production (000' tons)	4	4	3
Yield per Donum (Kilo)	153	158	157

(*) 1- The source of the Wheat, Barley, Rice and Cotton data for the years 1967-1970 is the C.S.O.

2- The source other kinds of the cereals data is the Ministry of Agriculture.

	1964	1965	1966	1967	1968	1969	1970
	6507	6813	6947	6021	6736	6646	7034
	807	1006	826	1029	1537	1183	1236
	124	148	119	170.9	228.2	178.0	175.7
	4391	4389	4677	3139	3614	3381	2690
	623	806	832	736	992	963	682
	142	184	178	234.3	274.6	284.9	253.6
	52	65	65	64	62	65	69
	7	12	12	13	12	12	14
	131	185	188	198	193	177	206
	34	38	37	39	43	39	42
	6	6	6	6	7	7	4
	164	176	159	160	173	167	106
	3	3	3	5	4	3	4
	530	646	818	1277	969	855	935
	192	241	259	283	256	255	247
	54	62	68	73	70	67	71
	10	16	18	19	20	18	20
	186	264	263	258	291	263	283
	13	20	18	19	20	21	22
	2	3	3	3	4	4	4
	136	168	166	171	190	183	160

PRINCIPAL SUMMER GROPS

TABLE (28)

KIND OF GROP	1961	1962	1963
Rice			
Cultivated Area (000' Donums)	255	336	431
Production (000' tons)	68	113	168
Yield per Donum (Kilo)	268	326	391
Sesame			
Cultivated Area (000' Donums)	38	39	40
Production (000' tons)	5	5	6
Yield per Donum (Kilo)	119	131	150
Millet			
Cultivated Area (000' Donums)	22	19	21
Production (000' tons)	3	3	4
Yield per Donum (Kilo)	141	154	182
Green Gram			
Cultivated Area (000' Donums)	30	32	34
Production (000' tons)	4	5	6
Yield per Donum (Kilo)	154	159	180
Maize			
Cultivated Area (000' Donums)	12	11	11
Production (000' tons)	2	2	2
Yield per Donum (Kilo)	158	173	186
Dry Cow Peas			
Cultivated Area (000' Donums)	13	14	20
Production (000' tons)	2	2	3
Yield per Donum (Kilo)	156	173	167
Giant Millet			
Cultivated Area (000' Donums)	27	24	22
Production (000' tons)	5	5	5
Yield per Donum (Kilo)	191	197	204
Cotton*			
Cultivated Area (000' Donums)	148	137	98
Production (000' tons)	27	26	17
Yield per Donum (Kilo)	182	187	171

Please see the note on page 62

1964	1965	1966	1967	1968	1969	1970
438	464	443	412	435	424	298
184	198	182	315	354	318	180
421	427	411	763.7	812.7	750.9	603.9
50	59	63	68	69	68	73
8	9	11	12	12	12	13
154	161	174	175	175	176	182.3
23	26	27	32	22	6	11
5	5	6	8	6	1	3
221	201	228	258	249	233	260
43	47	50	65	62	58	61
9	11	11	14	11	9	13
200	230	223	216	170	157.4	211.8
12	14	16	17	16	16	20
3	4	4	4	4	5	6
225	258	267	269	282	297	301.1
24	26	26	38	30	26	28
5	6	7	8	7	5	7
227	251	258	222	223	192	241.3
25	27	26	28	23	13	17
7	7	8	9	7	4	5
292	269	312	322	312	283	312.3
159	135	132	61	63	88	135
29	32	29	19	26	29	41
184	234	217	305.9	413.9	330.2	308.1

DATES PRODUCTION

TABLE (29)

Year	Planted area (Donum)	No. of Palm trees	Quantities of Dates (in thou- tons)
1960/61	447958	32056801	300
1961/62	447958	32056801	320
1962/63	447958	32056801	420
1963/64	447958	32056801	320
1964/65	447958	32056801	310
1965/66	582535	32000400	280
1966/67	582535	32000400	380
1967/68	582535	32000400	330
1968/69	582535	32000400	260
1969/70	582535	32000400	480

Source: Annual Abstract of statistics.

TOBACCO AND TUMBAK

TABLE (30)

Year	TOBACCO		TUMBAK	
	Production (ton)	Area Permitted for cultivation (Donum)	Production (ton)	Area Permitted for cultivation (Donum)
1960	12012	50000	280	2500
1961	10255	50000	443	2500
1962	7930	50000	572	2500
1963	4137	50000	603	2500
1964	13115	60000	338	1500
1965	11379	60000	84	1500
1966	5747	58000	156	1500
1967	13326	58000	118	1250
1968	15790	59400	14	1250
1969	9089	59610	56	3000
1970	15200	58000	199	3000

Source: Annual abstract of statistics.

LIVESTOCK POPULATIONS IN IRAQ (in Thousand)

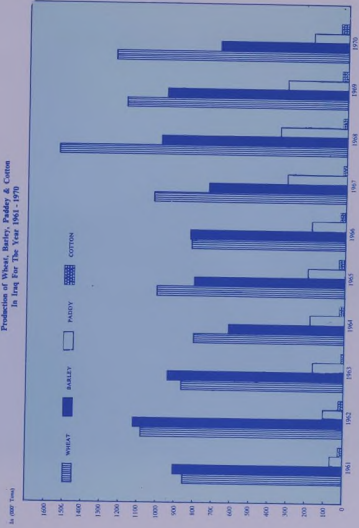
TABLE (31)

KINDS	1962	1963	1964
Sheep	10220	10820	10500
Goats	3200	2220	2080
Cattle	1510	1510	1540
Buffaloes	260	376	400
Camels	169	170	155
Horses	—	—	—
Mules	—	—	—
Donkeys	—	—	—
Chickens	—	—	—

Source: Directorate general of veterinary.

1965	1966	1967	1968	1969	1970
11040	11850	9720	10800	12000	13099
1845	1800	810	900	1000	2301
1455	1390	1206	1340	1500	1689
225	380	405	450	500	200
202	217	205	225	250	266
122	122	97	108	120	124
72	72	61	68	75	56
542	542	405	450	500	566
5394	5394	5000	5000	5000	6274

Production of Wheat, Barley, Paddy & Cotton
in Iraq For The Year 1961-1970



7

AGRARIAN REFORM



TOTAL AREA OF SEQUESTERED LANDS FROM THE BEGINNING OF LAND REFORM LAW UP TO 31/12/1970 ACCORDING TO MUHAFADHA

TABLE (32)

Muhafadha	Sequestered lands (Donum)	Governmental lands not cultivated (Donum)	Area of non agricultural sequestered lands (Donum)
Ninevah	1684849	21296	172488
Arbil	456120	1177	21870
Kirkuk	396209	19278	55629
Sulaimaniya	204064	18639	8190
Baghdad	466524	19278	48459
Diala	540975	72257	140410
Anbar	60671	3850	26327
Babylon	383230	25086	47205
Kerbela	34577	18241	38891
Waset	1011613	91923	205498
Qadissiya	478757	68123	170797
Thi-Qar	1126258	—	—
Maysan	46373	3571	39939
Basra	23285	31640	37299
Total	6913505	394359	1013002
Sequestered lands according to the new agrarian reform law No. 117 for 1970	588073	33336	4960
General total	7501578	427695	1017962

Source: Annual Abstract of statistics.

DISTRIBUTED AREAS & NO. OF BENEFICIARIES DURING 59—70
TABLE (33)

Year	DISTRIBUTED AREA (DONUM)			No. of Beneficiaries
	Sequestered lands	Miri lands	Total	
1959	—	38402	38402	1144
1960	223925	59504	283429	7393
1961	293726	198305	492032	9460
1962	569647	67876	637523	11170
1963	177161	207772	384933	7530
1964	267452	149532	416984	9599
1965	52852	27830	80682	1984
1966	55422	26771	82193	2340
1967	81281	60156	141437	3290
1968	73846	149402	223248	3183
1969	166673	54005	220678	3585
1970	131334	230793	362127	15138

Source: Annual Abstract of Statistics.

AREAS OF LAND RENTED, AND NO. OF FARMERS RENTING THEM
(AS ON DEC. 1970) AREA (Donum)

TABLE (34)

Administrative Units	Miri lands	Sequestered lands	Area of land received from Agricultural Bank	Total
Ninevah — Area	2047902	1021285	1477	3070664
Contractors	30177	20716	25	50918
Baghdad — Area	431387	277666	—	709053
Contractors	18486	6902	—	25388
Basrah — Area	19776	7375	8	27159
Contractors	2821	800	1	3622
Other Muhafadhas				
Area	2560354	2213478	77715	4851547
Contractors	91125	63561	1589	156275
General Total—Areas	5059419	3519804	79200	8658423
Contractors	142609	91979	1615	236203

Source: Ministry of Agrarian Reform.

NO. OF AGRICULTURAL CO-OPERATIVE SOCIETIES ESTABLISHED IN THE AREAS SUBJECT TO AGRARIAN REFORM

TABLE (35)

Year	No. of Societies	No. of Members	No. of Cultivators	Area in which co-operative societies work (Donum)
To 1966	367	47725	42317	—
To 1968	473	63225	72075	—
To 1969	667	82074	46709	—
To 1970	805	110472	130581	6000611

AMOUNTS OF LOANS PAID TO THE AGRICULTURAL CO-OPERATIVE SOCIETIES DURING 1964—1970

TABLE (36)

Year	Agricultural Supply	Agricultural machines & Implements	Co-operative marketing	Animal wealth	Agricultural services	Other purposes	Total
1964/65	18332	34042	—	—	—	—	52374
1965/66	42353	48210	6125	—	—	—	96688
1966/67	85970	16325	10822	7002	—	5000	125119
1967/68	194750	4300	60975	2000	—	750	262775
1968/69	170801	18125	115730	85272	21622	1115	412665
1969/70	1138955	151389	354462	222459	225731	33526	2126522

Source: Ministry of Agrarian Reform.

NO. OF WATER PUMPS OWNED BY AGRICULTURAL CO-OPERATIVE SOCIETIES AT THE END OF 1970

TABLE (37)

Station	No. of water Pumps	Total Horse Power	No. of Co-operative Societies
Baghdad	213	14982	50
Latifiya	28	1482	11
Waset	81	4762	29
Swaira	58	4166	14
Azizia	36	2694	7
Maysan	53	3220	31
Basra	5	339	5
Thi-Qar	—	—	—
Qadissiya	40	1207	26
Kerbela	15	1083	4
Babylon	12	577	9
Anbar	15	597	10
Diala	9	557	4
Ninevah	1	57	1
Total	566	35723	201

AGRICULTURAL MACHINES AND IMPLEMENTS OWNED BY THE
 AGRARIAN REFORM ORGANIZATION UP TO 31/12/1970
 TABLE (38)

Station	AGRICULTURAL MACHINES				
	Tractors	Combines	Share ploughs	Disc ploughs	Cultivators
Ninevah station	14	49	8	4	5
Arbil station	28	25	7	4	7
Kirkuk station	26	45	30	2	17
Sulaimaniya station	22	25	27	2	3
Baghdad unit	—	—	—	—	—
Abu Ghraib station	123	160	20	2	12
Latifiya unit	16	20	12	8	—
Diala station	27	46	28	2	18
Anbar station	23	9	24	4	7
Babylon unit	18	21	17	1	—
Kerbela unit	15	5	5	—	2
Waset station	53	50	36	4	2
Swaira unit	9	24	18	1	—
Azizia unit	15	12	14	1	1
Qadissiya unit	24	70	28	1	—
Thi-Qar unit	17	9	13	4	—
Maysan station	30	18	18	1	2
Basra unit	28	—	8	—	1
Muthanna unit	10	—	—	—	—
Dhok unit	5	—	10	—	—
Mussayab Big project	17	11	19	—	7
Directorate of Communication	—	—	—	—	—

WATER PUMPS						
Disc Harrows	Ditchers	Grain Drills	Wagons	No.	Hose power	No. of Cars
14	1	30	4	4	292	33
17	—	15	7	—	—	28
26	—	5	5	—	—	39
—	—	2	4	1	—	21
—	—	—	—	40	4054	30
25	7	8	8	—	—	38
2	3	—	3	10	500	14
4	5	—	3	22	1434	27
2	3	—	8	3	113	18
1	2	—	3	—	—	25
1	1	—	1	—	—	15
18	7	25	11	83	5613	56
7	4	—	2	35	2482	21
5	2	—	2	16	861	14
1	—	1	8	32	1605	46
—	3	—	4	17	952	48
2	2	—	3	35	2753	21
1	1	—	2	9	674	12
—	—	—	2	—	—	12
—	—	—	—	—	—	—
—	—	1	3	—	—	—
—	—	—	—	—	—	—
—	—	—	—	—	—	433

AGRICULTURAL MACHINES & IMPLEMENTS OWNED BY THE
AGRARIAN REFORM ORGANIZATION UP TO 31/12/1970

Cont.

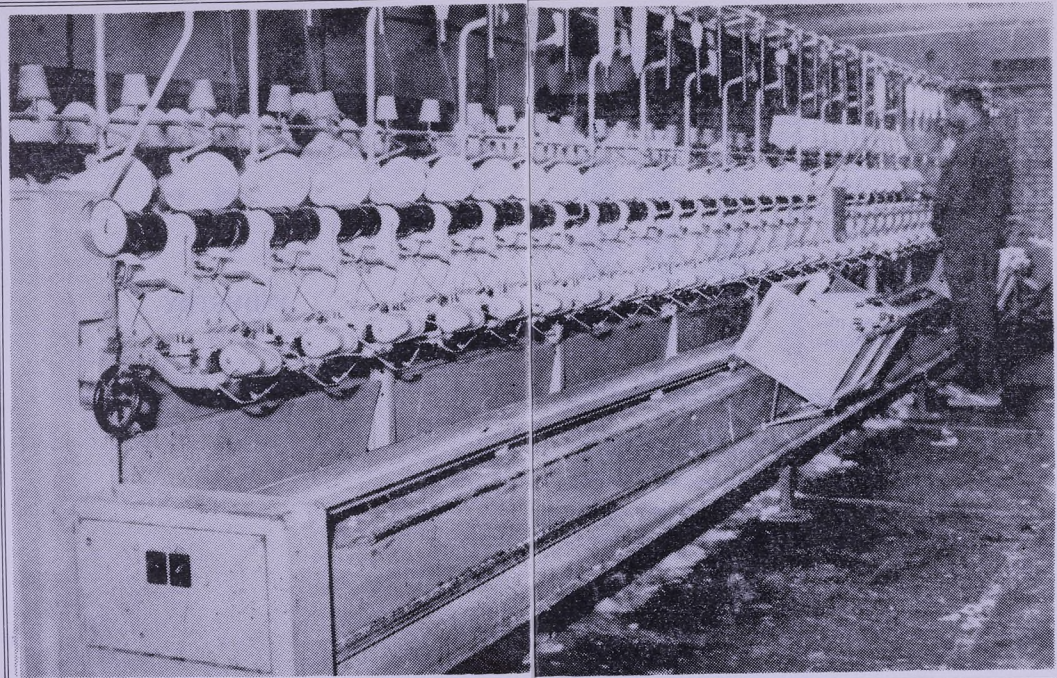
Station	AGRICULTURAL MACHINES				
	Tractors	Combines	Share Ploughs	Disc Ploughs	Cultivators
Heavy Machines Factory	—	—	—	—	—
Transport unit	—	—	—	—	—
17th & 30th July unit	70	—	45	2	—
7th April Project	25	—	—	2	—
Dalmaj project	33	—	—	5	—
14th Ramadhan project	5	—	—	—	—
Abu Ghraib stores	—	34	—	—	—
Total	653	633	387	50	84

Source : Ministry of Agrarian Reform

				WATER PUMPS		
Disc Harrows	Ditchers	Grain Drills	Wagons	No.	Horse Power	No. of Cars
—	—	—	—	—	—	52
—	—	—	—	—	—	41
—	—	—	—	—	—	30
—	—	—	—	—	—	—
—	—	—	—	—	—	—
—	—	—	—	—	—	—
126	41	87	83	307	21333	1074

8

INDUSTRY



SUMMARY OF NO. OF EMPLOYEES, ESTABLISHMENTS,
WAGES PAID, MATERIALS USED IN PRODUCTION & TOTAL
INCOME OF ALL MANUFACTURING INDUSTRIES IN IRAQ (60-69)(1)
TABLE (39)

DETAILS	1960	1961	1962
Average No. of Establishments	971	1162	1186
Average No. of Employees	67220	73255	77690
Total annual wages (000) IDs	15360	17371	18993
Total aids & facilities offered (000) IDs	763	724	660
Total hours worked (000) Hours	171371	184613	195584
Inputs (000) IDs	43387	50986	51211
Quantity of electricity units generated in establishments (000) kWh.	128815	165032	195688
Value of electricity units purchased from outside (000) IDs	681	688	768
Cost of Fuel consumed (000) IDs	1945	2368	2421
Cost of Lubricating Oil Consumed (000) IDs	367	400	424
Total revenue (000) IDs	85082	97375	104690

Source: Annual Results of the industrial survey.

N.B. 1- Including water, electricity and slaughteries.

- 2- Number of Employees & wages paid in 1969 covers all large Establishments, Water & Electricity projects & the persons who are Employed by slaughter contractors.
- 3- Total aids & Facilities offered represent those paid in water & electricity projects only.
- 4- Total hours worked for 1969 represents those worked in water & Electricity Industry only.
- 5- Cost of fuel consumed in 1969 Includes also cost of Lubricating Oil Consumed

1963	1964	1965	1966	1967	1968	1969
1131	1202	1243	1326	1386	1432	1368
75798	80066	83343	87518	89041	90027	97451(2)
19597	21084	22337	23558	25144	26818	30578(2)
757	1176	825	1010	1232	1274	1290(3)
189152	203058	210076	219556	224018	224139	29895(4)
54089	61067	62223	69214	76018	78116	93355
185751	185715	207734	239640	500886	559695	—
845	994	1040	1114	1163	1412	2230
2328	2613	3129	3033	3399	3914	4262(5)
401	491	463	429	433	423	—
104911	126537	134865	139641	155780	166864	186279

No. OF ESTABLISHMENTS, EMPLOYEES, WAGES PAID,
MATERIALS USED IN PRODUCTION & TOTAL INCOMES OF
SMALL & LARGE SCALE INDUSTRIES* (1960-1969)

TABLE (40)

Year & Kind of Establishment	Average No. of Establish- ments	Average No. of Employees		Total No. of Em- ployees
		Male	Female	
1960				
Large Scale	971	60043	7177	67220
Small Scale	—	—	—	—
Total	971	60043	7177	67220
1961				
Large Scale	1162	66465	6790	73255
Small Scale	—	—	—	—
Total	1162	66465	6790	73255
1962				
Large Scale	1186	70091	7599	77690
Small Scale	20191	42729	407	43136
Total	21377	112820	8006	120826
1963				
Large Scale	1131	68999	6799	75798
Small Scale	20502	40552	368	40920
Total	21633	109551	7167	116718
1964				
Large Scale	1202	72838	7228	80066
Small Scale	20799	45157	410	45567
Total	22001	118995	7638	125633

(*) Including Water, Electricity and Slaughteries

Source: Annual Result of the Industrial Survey

No. of Unpaid Em- ployees	Total Annual Wages (000)IDs		Total Annual Wages (000)IDs	No. of Electricity Units used in Production (000)kWh	Inputs (000)IDs	Revenue (000)IDs
	Male	Female				
593	14691	669	15360	262498	43387	85082
593	14691	669	15360	262498	43387	85082
811	16682	689	17371	299776	50986	97375
811	16682	689	17371	299776	50986	97375
852	18154	839	18993	348736	51211	104690
24113	2939	23	2962	18242	20776	32625
24965	21093	862	21955	366978	71987	137315
790	18850	747	19597	352478	54089	104911
22874	2934	17	2951	20175	26212	32451
23664	21784	764	22548	372653	80301	137362
769	20264	820	21084	385192	61067	126537
24087	3461	20	3481	22442	26842	43585
24856	23725	840	24565	407634	87909	170122

Con.

Year & Kind of Establishment	Average No. of Establishments	Average no. of Employees		Total No. of Employees
		Male	Female	
1965				
Large Scale	1243	75629	7714	83343
Small Scale	21333	47899	435	48334
Total	22576	123528	8149	131677
1966				
Large Scale	1326	78949	8569	87518
Small Scale	23020	46166	419	46585
Total	24346	125115	8988	134103
1967				
Large Scale	1386	80365	8676	89041
Small Scale	26285	55716	586	56302
Total	27671	136081	9262	145343
1968				
Large Scale	1432	83370	6657	90027
Small Scale	26690	53952	275	54227
Total	28122	137322	6932	144254
1969				
Large Scale	1368	90165	7286	97451
Small Scale	27284	58347	372	58719
Total	28652	148512	7658	156170

No. of Unpaid Employees	Total Annual Wages (000) IDs.		Total Annual Wages (000)IDs.	No. of Electricity Units used in Production (000)kWh	Inputs (000)IDs.	Revenue (000)IDs.
	Male	Female				
825	21330	1007	22337	423232	62223	134865
24186	4327	20	4347	28717	36307	53215
25011	25657	1027	26684	451949	98530	188080
837	22499	1059	23558	486714	69214	139641
26041	3766	23	3789	27655	41911	27566
26878	26265	1082	27347	514369	111125	197207
911	24018	1126	25144	500886	76018	155780
30507	4768	40	4808	—	55581	77422
31418	28786	1166	29952	500886	131599	233202
955	25739	1079	26818	559695	78116	166864
30194	4803	25	4828	—	53857	75497
31149	30542	1104	31646	559695	131973	242361
881	29351	1227	30578	—	93355	186279
32557	4841	35	4876	—	48483	70442
33438	34192	1262	35454	—	150712	256721

NO. OF ESTABLISHMENTS, EMPLOYEES, WAGES PAID, MATERIALS
USED IN PRODUCTION & TOTAL INCOMES ACCORDING TO
MUHAFADHAS*

TABLE (41)

MUHAFADHA	1960	1961	1962
BAGHDAD:-			
No. of Establishments	480	599	652
No. of Employees	39510	44093	47252
Annual wages paid (000)IDs-	10129	11518	12701
Value of Materials used in production (000)IDs-	29763	34435	35138
Value of Sales & other Incomes (000)IDs-	59935	68186	72220
No. of Electricity Units Consumed (000)kWh-	142175	153586	184836
BASRAH:-			
No. of Establishments	171	177	136
No. of Employees	11255	9904	9643
Annual wages paid (000)IDs-	1807	1909	1960
Value of Materials Used in Production (000)IDs-	5060	5467	4685
Value of Sales & other Incomes (000)IDs-	8739	9342	9995
No. of Electricity Units consumed (000)kwh-	8137	20561	20219
NINEVAH:-			
No. of Establishments	81	104	102
No. of Employees	6231	7402	7646
Annual wages paid (000)IDs-	1302	1412	1431
Value of Materials used in Production (000)IDs-	4037	5163	4971
Value of Sales & other Incomes (000)IDs-	6755	8372	9299
No. of Electricity Units Consumed (000)kWh-	37018	43401	46627

(*) Including Water, Electricity and Slaughteries-

1963	1964	1965	1966	1967	1968	1969
642	674	678	747	778	832	795
48064	49989	51961	55309	56210	57895	62254
13626	14401	15207	16064	17189	18323	20799
36909	40690	43665	48114	52867	54907	73443
73393	88501	96703	95938	116860	113299	128140
189077	193795	216196	265639	275256	296903	—
118	134	159	157	155	167	146
8238	9147	9229	9589	9606	9122	9414
1697	1867	1987	2101	2201	2161	2333
3757	4533	4114	4311	4425	4058	4530
6927	8197	8014	8794	9238	9530	10231
20907	22371	21751	23057	21888	23472	—
99	100	105	107	113	74	72
7311	7421	8216	8508	8451	7016	7322
1510	1683	1811	1893	1980	2127	2310
6006	7577	6260	7429	7640	7876	9944
9963	12481	11639	13366	15076	15485	15754
47309	59137	62514	66392	66879	74463	—

Con.

MUHAFADHA	1960	1061	1962
KIRKUK:-			
No. of Establishments	23	40	37
No. of Employees	985	1501	1498
Annual wages paid (000)IDs	296	427	442
Value of Materials used in Production (000)IDs	170	612	490
Value of Sales & other Incomes (000)IDs	735	1316	1285
No. of Electricity Units Consumed (000)kWh	24262	27786	31260
ARBIL:-			
No. of Establishments	9	11	15
No. of Employees	280	349	436
Annual wages paid (000)IDs	68	75	103
Value of Materials used in Production (000)IDs	203	242	141
Value of Sales & other Incomes (000)IDs	346	332	272
No. of Electricity Units Consumed (000)kWh	1070	1911	1868
SULAIMANIYA:-			
No. of Establishments	12	12	13
No. of Employees	766	797	1245
Annual wages paid (000)IDs	222	233	320
Value of Materials used in Production (000)IDs	216	373	941
Value of Sales & other Incomes (000)IDs	902	893	2807
No. of Electricity Units Consumed (000)kWh	14907	13417	17612
DIALA:-			
No. of Establishments	12	20	22
No. of Employees	1176	1346	1539
Annual wages paid (000)IDs	348	404	487

94

1963	1964	1965	1966	1967	1968	1969
30	34	36	41	44	44	41
1325	1537	1655	1773	1766	1699	2033
386	443	501	545	556	563	751
466	528	437	540	532	509	624
1290	1548	1410	1721	1835	1906	2120
34322	37135	39804	39115	37036	38508	—
14	15	16	16	20	19	18
442	435	610	561	528	513	512
103	103	136	136	131	132	135
102	132	90	167	162	104	218
230	302	265	378	435	1715	2630
1666	1224	1312	1761	2346	2193	—
6	10	6	13	14	12	8
1091	1278	1382	1499	1547	1663	1781
274	353	389	414	436	491	535
707	1094	1367	1737	1852	2063	3975
2310	3489	3880	4970	5960	6686	7210
10096	17200	17968	21111	22948	23049	—
18	20	24	27	26	30	32
1415	1663	1565	1599	1505	1627	1443
473	536	547	559	577	620	687

95

Con.

MUHAFADHA	1960	1961	1962
Value of Materials used in Production (000)IDs-	186	197	230
Value of Sales & other incomes (000)IDs-	1048	1011	1077
No. of Electricity Units Consumed (000)kWh-	2564	2413	2535
ANBAR:-			
No. of Establishments	8	13	14
No. of Employees	255	384	414
Annual wages paid (000)IDs-	49	78	89
Value of Materials used in Production (000)IDs-	39	60	75
Value of Sales & other Incomes (000)IDs-	104	226	249
No. of Electricity Units Consumed (000)kWh-	10	796	1934
WASET:-			
No. of Establishments	15	16	17
No. of Employees	609	733	736
Annual wages paid (000)IDs-	105	127	131
Value of Materials in Production (000)IDs-	107	134	102
Value of Sales & other Incomes (000)IDs-	240	282	252
No. of Electricity Units Consumed (000)kWh-	288	461	293
MAYSAN:-			
No. of Establishments	11	17	21
No. of Employees	1167	1300	1416
Annual wages paid (000)IDs-	162	175	195
Value of Materials used in Production (000)IDs-	127	309	431
Value of Sales & other Incomes (000)IDs-	356	572	670
No. of Electricity Units Consumed (000)kWh-	664	862	980

96

1963	1964	1965	1966	1967	1968	1969
248	303	333	345	359	420	535
1053	1527	2361	2862	2579	3004	3068
2689	2964	3004	3236	4020	4316	—
17	19	21	22	18	22	20
434	506	559	511	504	635	634
95	115	133	133	127	180	184
83	112	127	132	156	387	395
229	291	330	372	366	1656	1776
2007	3101	2989	3062	3060	5599	—
15	15	16	18	19	19	19
670	714	708	776	867	880	1479
121	134	145	163	184	192	400
134	154	127	168	154	247	488
277	311	329	401	506	608	801
471	504	274	631	1829	2281	—
24	23	25	25	33	34	35
1062	1066	1156	1154	1351	1160	1179
164	175	183	190	235	193	221
428	323	352	429	1027	729	802
653	551	561	681	1256	1070	1107
883	834	902	923	1547	1056	—

97

Con.

MUHAFADHA	1960	1961	1962
BABYLON:-			
No. of Establishments	79	71	53
No. of Employees	2094	2175	2305
Annual wages paid (000)IDs-	360	403	472
Value of Materials used in Production (000)IDs-	1829	1832	1853
Value of Sales & other Incomes (000)IDs-	2987	3167	2986
No. of Electricity Units Consumed (000)kWh-	14639	17218	20094
KARBELA:-			
No. of Establishments	35	42	64
No. of Employees	1096	1390	1665
Annual wages paid (000)IDs-	186	249	279
Value of Materials used in Production (000)IDs-	939	1337	1413
Value of Sales & other Incomes (000)IDs-	1204	1820	1886
No. of Electricity Units Consumed (000)kWh-	849	3728	4046
QADISSIYA:-			
No. of Establishments	19	21	21
No. of Employees	1158	1217	1286
Annual wages paid (000)IDs-	231	251	283
Value of Materials used in Production (000)IDs-	494	553	488
Value of Sales & other Incomes (000)IDs-	1358	1418	1209
No. of Electricity Units Consumed (000)kWh-	15517	12933	15326
THI-QAR:-			
No. of Establishments	18	19	17
No. of Employees	642	664	593
Annual wages paid (000)IDs-	96	109	103
Value of Materials used in Production (000)IDs-	216	272	253
Value of Sales & other Incomes (000)IDs-	374	438	483
No. of Electricity Units Consumed (000)kWh-	399	706	1198

98

1963	1964	1965	1966	1967	1968	1969
42	42	40	38	42	46	49
2019	2195	1934	1990	2187	2952	3272
419	448	426	451	513	729	896
2276	2571	2688	3070	3558	3670	4102
3668	4259	4554	5082	5828	5616	6383
19386	20361	25113	26481	29312	54806	—
60	63	67	64	72	75	76
2035	2286	2415	2521	2636	2938	3068
375	432	446	509	554	628	720
1993	2142	1637	1762	2183	1909	1908
2825	2923	2569	2720	3301	3138	3376
4197	5042	5462	7501	8248	9031	—
24	27	26	28	28	33	31
1145	1295	1194	1138	1276	1360	1763
270	308	297	290	340	363	462
529	538	536	537	609	752	993
1455	1572	1623	1662	1784	2420	2988
17903	20276	22830	26080	24945	20794	—
20	21	24	23	20	25	26
517	546	745	585	596	567	755
83	85	129	110	122	116	145
451	414	490	472	540	492	374
635	583	726	695	756	732	694
1565	1250	3114	1726	1572	3325	—

99

NO. OF ESTABLISHMENTS, EMPLOYEES, WAGES PAID,
MATERIALS USED IN PRODUCTION & TOTAL INCOME
ACCORDING TO INDUSTRY—GROUPS (1960—1969)

TABLE (42)

INDUSTRIES	1960	1961	1962
1) Mining & Quarrying (Excluding Foreign Oil Co's.)			
No. of Establishments	1	5	5
No. of Employees	217	280	340
Annual Wages paid (000)IDs.	71	90	110
Value of Materials used in Production (000)IDs.	8	145	158
No. of Electricity Units Consumed (000)kWh.	579	709	734
Value of Sales & other Incomes (000)IDs.	87	283	297
2) Manufacturing Industry:-			
(a) FOODSTUFF:-			
No. of Establishments	144	173	181
No. of Employees	8694	8208	8987
Annual wages paid (000)IDs.	1286	1435	1606
Value of Materials used in Production (000)IDs.	13833	16363	15591
No. of Electricity Units Consumed (000)kWh.	17203	23566	27728
Value of Sales & other Incomes (000)IDs.	16380	19787	20248

NOTS :

- 1- The decrease in the no. of Establishments in the Tobacco Industry during 1968 & 1969 was as a result of excluding hand-made Cigarettes Industry.
- 2- An Increase in the no. of Establishments in the chemical Industry in 1968 & 1969 was as a result of adding Vegetable Oil Establishment in this Industry instead of food Industry.
- 3- Manufacturing of Rubber & Plastic has been Included in the chemical Industry instead of other Industries.

1963	1964	1965	1966	1967	1968	1969
5	6	7	9	8	9	9
365	419	387	380	359	700	783
116	131	139	136	132	195	334
141	236	180	193	74	84	263
809	884	1028	1050	1109	1138	—(1)
175	324	504	499	366	507	583
184	202	222	225	250	271	250
8260	9304	8966	9599	10285	10468	11010
1505	1697	1679	1845	2069	2202	2465
18186	20401	18322	20665	26026	24754	28400
31743	29948	34016	37578	38131	45008	—
22472	24104	23396	26063	33587	31182	33585

Con.

INDUSTRIES	1960	1961	1962	1963	1964	1965	1966	1967	1968	1969
(b) BEVERAGES:										
No. of Establishments	18	20	21	17	21	21	21	20	20	19
No. of Employees	1977	2101	2420	2583	2869	3372	3926	3699	3295	3377
Annual wages paid (000)IDs	506	568	668	769	842	1021	1134	1142	1153	1310
Value of Materials used in Production (000)IDs	1523	1560	1839	2269	3081	2938	3397	2526	2878	4713
No. of Electricity Units Consumed (000) kWh.	2780	3095	6199	6222	7423	8361	8636	8359	9076	—
Value of Sales & other Incomes (000)IDs	4438	4782	6071	6154	7406	8341	11510	110545	11634	12196
(c) TOBACCO:										
No. of Establishments	48	67	67	64	57	60	58	60	5(2)	3(2)
No. of Employees	3930	4634	5009	4615	4346	5023	5081	4952	2984	3460
Annual wages paid (000)IDs	970	969	970	1064	1031	1141	1168	1210	1149	1358
Value of Materials used in Production (000)IDs	3403	3504	3464	3336	3594	4921	4099	3924	4060	5274
No. of Electricity Units Consumed (000) kWh.	598	1335	2489	2369	2788	2823	3157	3565	3352	—
Value of Sales & other Incomes (000)IDs	7619	8555	9658	9780	9967	10192	11546	12953	13660	14952
(d) TEXTILES:										
No. of Establishments	47	52	68	53	58	58	65	69	80	81
No. of Employees	7823	8173	8781	8482	9341	9937	10478	10635	10843	11992
Annual wages paid (000)IDs	1801	1816	2104	2263	2450	2851	2987	3152	3245	3738
Value of Materials used in Production (000)IDs	5574	6458	6119	5960	6841	6759	7346	7699	7687	9423
No. of Electricity Units Consumed (000) kWh.	30664	30190	33363	34589	35902	37685	38723	38515	39374	—
Value of Sales & other Incomes (000)IDs	8614	9155	10602	8963	10876	11618	12423	12588	14266	15131
(e) CLOTHING & FOOTWEAR:										
No. of Establishments	70	86	111	111	112	116	156	167	187	188
No. of Employees	2847	3408	3885	4575	4407	4738	5316	5562	6082	6553
Annual wages paid (000)IDs	732	861	983	1082	1203	1302	1466	1592	1772	2001
Value of Materials used in Production (000)IDs	2986	3544	4345	4009	4212	4668	5368	5795	6574	7595

Con.

INDUSTRIES	1960	1961	1962
No. of Electricity Units Consumed (000)kWh	1979	2566	3486
Value of Sales & other Incomes (000)IDs	4118	5740	5825
(f) PAPER & PAPER PRODUCTS:			
No. of Establishments	8	10	11
No. of Employees	159	184	440
Annual wages paid (000)IDs	38	46	99
Value of Materials used in Production (000)IDs	454	597	886
No. of Electricity Units Consumed (000)kWh	197	231	475
Value of Sales & other Incomes (000)IDs	582	751	1183
(g) FURNITURE:			
No. of Establishments	64	72	74
No. of Employees	1332	1436	1508
Annual wages paid (000)IDs	295	308	341
Value of Materials used in Production (000)IDs	712	728	743
No. of Electricity Units Consumed (000)kWh	565	659	659
Value of Sales & other Incomes (000)IDs	1306	1271	1447
(h) PRINTING:			
No. of Establishments	39	49	45
No. of Employees	1380	1516	1438
Annual wages paid (000)IDs	432	476	463
Value of Materials used in Production (000)IDs	571	853	1114
No. of Electricity Units Consumed (000)kWh	1233	1497	1587
Value of Sales & other Incomes (000)IDs	1275	1435	1779
(i) LEATHER INDUSTRY:			
No. of Establishments	15	18	16
No. of Employees	644	757	695
Annual wages paid (000)IDs	176	208	204

104

1963	1964	1965	1966	1967	1968	1969
3502	4418	5007	6347	8739	9793	—
5552	5887	6212	7722	8155	9684	10995
12	12	13	17	20	24	22
463	566	605	678	794	840	915
105	141	149	172	203	227	258
868	1145	1231	1374	1428	1716	1815
454	554	915	865	960	1603	—
1176	1503	1734	1992	2107	2421	2683
63	69	66	72	76	79	74
1251	1591	1224	1276	1305	1360	1805
301	394	293	317	339	363	645
553	665	598	643	696	793	1137
569	770	834	885	1172	1301	—
996	1126	1066	1288	1203	1410	2145
37	42	43	47	44	45	35
1317	1412	1579	1631	1584	1712	1812
397	448	510	503	514	573	668
731	696	769	726	843	945	1002
1219	1554	1966	1809	1696	1878	—
1292	1273	1192	1732	1951	2138	1861
14	18	17	18	17	15	15
641	658	689	271	737	724	836
191	216	214	226	236	243	285

105

Con.

INDUSTRIES	1960	1961	1962
Value of Materials used in Production (000)IDs	1046	1251	1126
No. of Electricity Units Consumed (000)kWh	1140	1334	1292
Value of Sales & other Incomes (000)IDs	1487	1522	1602
(j) CHEMICALS:			
No. of Establishments	20	24	22
No. of Employees	1924	2095	2085
Annual wages paid (000)IDs	608	660	737
Value of Materials used in Production (000)IDs	4851	5984	6674
No. of Electricity Units Consumed (000)kWh	7316	9123	8228
Value of Sales & other Incomes (000)IDs	7819	8378	9158
(k) PETROLEUM:			
No. of Establishments	4	4	4
No. of Employees	2215	2206	2334
Annual wages paid (000)IDs	1064	1127	1228
Value of Materials used in Production (000)IDs	1675	2052	1401
No. of Electricity Units Consumed (000)kWh	26605	24363	27847
Value of Sales & other Incomes (000)IDs	12418	14023	13592
(l) NON-METALLIC MINERALS:			
No. of Establishments	260	297	268
No. of Employees	16386	17458	18823
Annual wages paid (000)IDs	2733	3092	3199
Value of Materials used in Production (000)IDs	3379	4068	4071
No. of Electricity Units Consumed (000)kWh	89248	93261	99312
Value of Sales & other Incomes (000)IDs	10421	12048	11854
(m) METAL INDUSTRY:			
No. of Establishments	44	68	67
No. of Employees	1310	1690	1720
Annual wages paid (000)IDs	299	377	415

106

1963	1964	1965	1966	1967	1968	1969
1093	1106	1190	1551	1347	1399	1896
1228	1221	1399	1580	1618	2007	—
1601	1484	1730	2225	1872	2042	2311
27	30	28	29	31	55(3)	58(3)
2289	2401	2285	2381	2636	3963	4727
886	964	999	989	1107	1508	1815
6798	8092	9007	9118	8792	10310	11839
9261	10043	10562	11933	12742	42649	—
10921	12222	13174	13676	15622	17825	20275
4	4	5	6	7	7	7
2374	2440	2451	2558	2593	2847	3153
1302	1339	1395	1446	1534	1690	1955
1681	1856	1973	4434	4775	5072	5369
28318	32470	31474	36879	34294	34782	—
13842	23473	25322	15839	17119	17986	20300
251	268	282	281	279	291	277
17579	18120	18951	18928	18350	18147	19751
3299	3485	3523	3574	3585	3714	4222
4201	4495	5014	4859	5151	3747	7434
99059	117512	134783	144564	147513	142759	—
11129	13089	14297	14164	14466	16405	17720
63	65	66	67	73	77	67
1577	1557	1519	1516	1713	1768	1509
396	444	463	470	562	709	468

107

Con.

INDUSTRIES	1960	1961	1962
Value of Materials used in Production (000)IDs	898	1236	1221
No. of Electricity Units Consumed (000)kWh	1550	2683	2557
Value of Sales & other Incomes (000)IDs	1425	1980	2090
(n) REPAIRS & TELEPHONES:			
No. of Establishments	83	118	120
No. of Employees	7401	10010	9890
Annual wages paid (000)IDs	1936	2715	2683
Value of Materials used in Production (000)IDs	1152	1343	1133
No. of Electricity Units Consumed (000)kWh	3904	6656	5697
Value of Sales & other Incomes (000)IDs	769	1022	796
(o) WATER & ELECTRICITY:			
No. of Establishments	90	94	97
No. of Employees	8059	8686	9216
Annual wages paid (000)IDs	2218	2529	2815
Value of Materials used in Production (000)IDs	834	1011	1098
No. of Electricity Units Consumed (000)kWh	75931	97257	126412
Value of Sales & other Incomes (000)IDs	5543	6265	8074
(p) OTHER INDUSTRIES:			
No. of Establishments	16	6	9
No. of Employees	923	412	223
Annual wages paid (000)IDs	197	94	74
Value of Materials used in Production (000)IDs	475	287	229
No. of Electricity Units Consumed (000)kWh	1010	1252	672
Value of Sales & other Incomes (000)IDs	781	376	414

Source:- Annual Results of the Industrial survey-

1963	1964	1965	1966	1967	1968	1969
1187	1205	1124	1628	2256	1834	1969
2324	1909	2283	2581	3018	3061	—
1744	2029	1965	2515	3172	2992	2715
126	129	124	127	130	148	133
9696	10374	10607	11387	11832	12389	13091
2839	3141	3237	3455	3857	4100	4622
1736	1960	1707	1799	2445	2320	3105
6565	8491	6836	7015	6592	8384	—
780	1461	2599	2132	4616	5248	6876
88	95	100	106	113	114	115
9366	9990	10692	11212	11551	11774	12448
2974	3076	3324	3537	3772	4009	4364
1100	1215	1489	1416	1602	1957	2062
123762	128735	142107	181990	191225	213285	229336
8007	9915	10999	13456	14537	17336	21847
12	13	15	20	23	6	9
331	271	309	443	454	131	222
107	80	96	133	132	53	75
241	268	336	597	629	94	206
521	567	1155	1222	1639	243	—
333	391	524	863	920	169	333

NO. OF ESTABLISHMENTS, EMPLOYEES, WAGES PAID.
MATERIALS USED IN PRODUCTION & TOTAL INCOME IN
THE GOVERNMENT INDUSTRIAL SECTOR (1960—1969)

TABLE (43)

Year	Average No. of Establishments	Average No. of Employees		Total No. of Employees
		Male	Female	
1960	158	21430	522	21952
1961	199	25530	611	26141
1962	216	27289	814	28103
1963	211	27939	794	28733
1964	261	40698	1288	41986
1965	266	43089	1411	44500
1966	277	44968	1536	46504
1967	289	46732	1764	48496
1968	293	49536	2015	51551
1969	299	54728	2339	57067

Source: Annual Results of the Industrial survey.

Notes:-

- 1- The expansion in the Government Industrial sector since 1964 was due to the Nationalization Laws issued after 1964.
- 2- Above figures represent all Government sector including Water, Electricity & Slaughteries.

Total Annual Wages (000)IDs.		Total Wages (000)IDs.	No. of Electricity Units consumed (000) kWh.	Inputs (000)IDs.	Total Revenue (000)IDs.
Male	Female				
6211	100	6311	141458	6635	23074
7513	123	7636	162517	9116	27723
8225	170	8395	199744	8527	31362
8748	183	8931	196139	11331	33404
13230	311	13541	325301	33789	82317
14350	453	14803	339268	36476	90077
15069	387	15456	431829	38032	91063
16331	461	16792	442352	40121	99525
17679	515	18194	494129	41794	108539
20379	587	20966	—	49317	122884

MANUFACTURING INDUSTRIES ACCORDING TO SIZE
(No. of Workers Employed)

TABLE (44)

Year	Average No. of Establishments	Average No. of Employees		Total No. of Employees
		Male	Female	
No. of Employees (10—19)				
1961	557	7034	384	7418
1962	583	7091	524	7615
1963	537	6549	437	6986
1964	580	6806	548	7354
1965	595	6731	423	7154
1966	647	7250	417	7667
1967	698	7777	515	8292
1968	799	8758	579	9337
1969*	660	7461	668	8129
No. of Employees: (20—99)				
1961	444	15127	2751	17878
1962	428	15073	2811	17884
1963	415	14261	2844	17105
1964	430	14909	2640	17549
1965	438	15473	3404	18877
1966	478	16456	3372	19828
1967	482	16367	2990	19357
1968	431	15718	1627	17345
1969*	390	14609	1639	16248

Total Annual wages (000)IDs-		Total wages (000)IDs-	No. of Electricity Units consumed (000) kWh.	Inputs (000)IDs-	Total Revenue (000)IDs-
Male	Female				
1396	33	1439	9437	7545	10044
1478	44	1522	10377	7613	9900
1401	36	1437	11167	9227	10785
1520	44	1564	21907	6771	10921
1540	44	1584	13456	6947	9912
1719	55	1774	14319	10789	12132
1835	68	1903	18392	13439	17505
2116	94	2211	22654	13787	18221
1937	114	2051	—	12915	16830
3420	204	3624	26199	14039	20979
3669	226	3895	32957	15283	22849
3486	244	3730	33686	16286	21828
3954	242	4196	39186	18719	24489
3887	292	4178	44860	17882	25125
4160	299	4459	44555	20043	27303
4439	294	4733	50610	22174	31464
4430	223	4653	55495	20667	31814
4293	250	4543	—	25225	33156

Con.

Year	Average No- of Establish- ments	Average No. of Employees		Total No. of Employees
		Male	Female	
No. of Employees: (100—199)				
1961	93	11779	1252	13031
1962	98	12598	1281	13879
1963	102	12695	1258	13953
1964	116	14573	1465	16038
1965	131	15344	1982	17326
1966	130	15328	2540	17868
1967	127	15258	2408	17666
1968	122	14962	1340	16302
1969*	126	16389	1459	17848
No. of Employees: (200 & over)				
1961	69	32525	2403	34928
1962	77	35319	2977	38296
1963	73	35473	2254	37727
1964	74	36551	2580	39131
1965	78	38069	1896	39965
1966	72	39909	2237	42146
1967	75	40955	2760	43715
1968	80	43932	3111	47043
1969*	72	39384	3386	42770

Source:- Annual Results of the Industrial Survey.

Note:- Concerning data for 1969, it does not cover Water & Electricity Establishments.

Total Annual wages (000)IDs.		Total wages (000)IDs.	No. of Electricity Units con- sumed (000) kWh.	Inputs (000)IDs.	Total Revenue (000)IDs.
Male	Female				
2427	124	2551	28517	7207	12725
2529	130	2659	16167	6323	12109
2590	113	2703	35489	6789	11157
3142	137	3279	34936	7926	14763
3175	195	3370	29778	6927	15899
3319	260	3599	31401	8345	19118
3347	252	3599	32068	9158	18980
3404	171	3575	26636	8352	20381
3967	193	4160	—	12474	20970
9438	329	9767	235623	22196	53627
10478	440	10918	289236	21992	59832
11373	353	11726	272136	21786	61133
11648	398	12046	289163	27652	76365
12729	476	13205	335139	30468	83928
13281	444	13725	396440	30037	81088
14396	512	14908	399816	31288	87831
15789	590	16379	454910	34958	95557
14857	603	15460	—	49554	93377

QUANTITIES PRODUCED FOR CERTAIN COMMODITIES

TABLE (45)

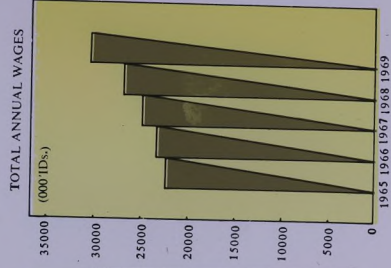
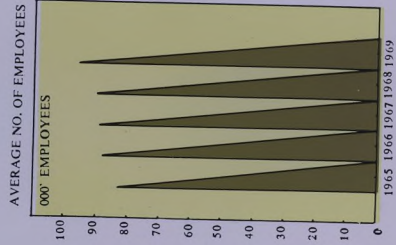
COMMODITY	UNIT	1965	1966	1967	1968	1969
Vegetable Oil	Ton	47596	43657	50240	52858	57986
SOAP:						
Washing	Ton	7454	8842	7746	9761	8730
Toilet	Ton	4631	7646	5904	7621	7311
Cleaning Materials	Ton	9093	11196	9788	11255	12732
Shaving	Ton	—	—	—	—	92
Cigaretts	Mill. cigarettes	5191	5210	4942	5056	5226
Matches	Gross	1102475	1031030	1275285	1370970	1686430
Sugar	Ton	46492	54707	59487	58475	66634
Textiles & Yarn:						
Cotton Yarn	Kilo	700690	625719	608235	579513	921169
Silk Yarn	Kilo	286373	188100	106066	39884	86883
Woolen Yarn	Kilo	326287	318608	332747	299917	309068
Cotton Textiles*	(1000 Metre)	32542	33132	34047	31806	32447
Silk Textiles*	(1000 Metre)	9508	11002	13535	12252	12863
Woolen Textiles*	(1000 Metre)	902	938	888	836	902
Woolen Blankets	(1000 No.)	462	511	507	447	611
Cement:						
Cement ordinary	(1000 Ton)	1206	1162	1147	1120	1158
Salt resistant Cement	(1000 Ton)	90	116	166	200	223

Notes:

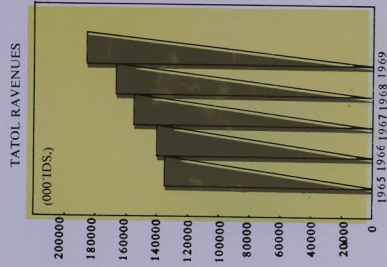
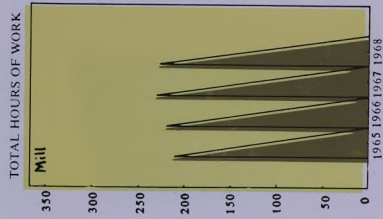
(*) Different Kinds.

Data for 1970 are not available.

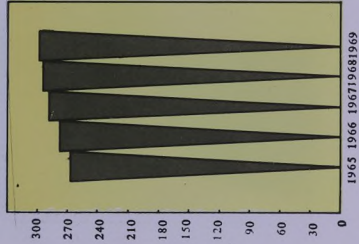
RESULTS OF THE INDUSTRIAL SURVEY (LARGE ESTABLISHMENTS)



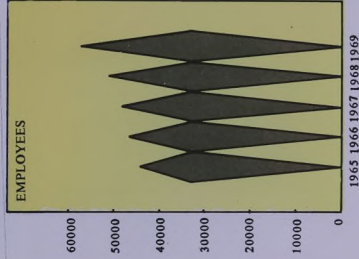
RESULTS OF THE INDUSTRIAL SURVEY (LARGE ESTABLISHMENTS)



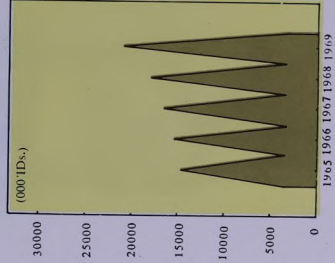
NO. OF INDUSTRIAL
ESTABLISHMENTS (PUBLIC SECTOS)



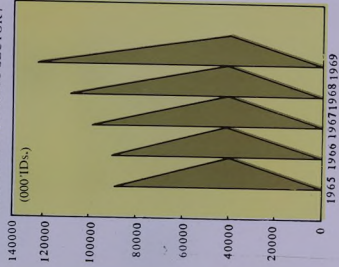
AVERAGE NO. OF EMPLOYEES
IN THE INDUSTRIAL(PUBLIC SECTOR)



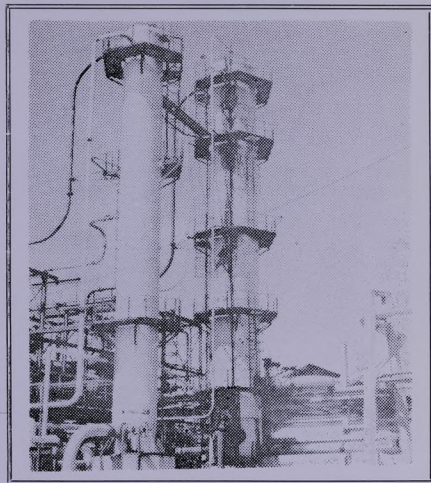
TOTAL ANNUAL WAGES PAID,
(INDUSTRIAL PUBLIC SECTOR)



ANNUAL REVENUES
(INDUSTRIAL PUBLIC SECTOR)



9
OIL



PRODUCTION OF CRUDE OIL IN IRAQ DURING
THE YEARS 1960-1970
In Thou. Long Ton



PRODUCTION OF CRUDE OIL IN IRAQ (000'Long Ton)

TABLE (46)

1	COMPANIES		1960	1961	1962	1963	
	Foreign Companies:						
	I.P.C.		33842	36994	38069	41623	
	B.P.C.		11396	9786	8842	12676	
	M.P.C.		1296	1280	1303	1276	
	Government Company		183	191	177	198	
	Total		46717	48251	48391	55773	
2	1964	1965	1966	1967	1968	1969	1970
	41711	43900	42591	37626	54828	55441	56892
	17347	17975	22742	20049	16510	16587	17067
	1292	1275	1262	1264	1282	1281	1282
	303	306	290	967	480	472	522
	60653	63456	66885	59906	73100	73781	75763

Source: Ministry of Oil & Minerals

PRODUCTION OF CRUDE OIL BY COMPANIES & FIELDS DURING
THE YEARS 1964—1969 (000'bbl/day) (000'M. Ton)

TABLE (47)

1 COMPANY	FIELD	1964	
		bbl/day	M· Ton
I·P·C·	Kirkuk	813	39601
	Jambur	14	645
	Bai Hassan	42	2091
	Total	869	42337
M·P·C·	Ain-Zalah—Butmah	26	1312
B·P·C·	Rumaila—Zubair	354	17607
General Total		1249	61256

2 1965		1966		1967	
bbl/day	M· ton	bbl/day	M· ton	bbl/day	M· ton
854	41604	833	40561	748	36432
13	593	12	543	6	289
47	2364	44	2213	30	1472
914	44561	889	43317	784	38193
26	1295	25	1281	25	1282
367	18244	464	23084	413	20350
1307	64100	1378	67682	1222	59825

3 1968		1969		1970	
bbl/day	M· ton	bbl/day	M· ton	bbl/day	M· ton
1076	52406	1083	52756	1117	53760
12	563	13	600	10	444
54	2686	59	2920	55	2688
1142	55655	1155	56276	1182	56892
26	1301	26	1300	26	1282
337	16758	339	16836	351	17067
1505	73714	1520	74412	1559	75241

Source: C·S·O· — Industrial Statistics Dept.

PRODUCING WELLS BY COMPANIES DURING THE YEARS 1964—69

TABLE (48)

1 Company		Field		1964		
		Flowing	Artificial lift	Wells drilling		
I·P·C·	Kirkuk	56	—	—	—	1
	Bai Hassan	10	—	—	—	—
	Jambur	2	—	—	—	—
M·P·C·	Ain-Zalah	6	—	—	—	—
	Butmah	—	2	—	—	—
B·P·C·	Zubair	24	—	—	—	—
	Rumaila	30	—	—	—	—
	Total	128	2	—	—	1

2 1965			1966			1967		
Flowing	Artificial lift	Wells drilling	Flowing	Artificial lift	Wells drilling	Flowing	Artificial lift	Wells drilling
50	—	1	45	—	—	46	—	—
8	—	—	7	—	—	7	—	—
2	—	—	2	—	—	2	—	—
7	—	—	9	—	—	8	—	—
—	2	—	—	3	—	—	3	—
25	—	—	27	—	—	23	—	—
26	—	—	30	—	—	28	—	—
118	2	1	120	3	—	114	3	—

3 1968			1969		
Flowing	Artificial lift	Wells drilling	Flowing	Artificial lift	Wells drilling
44	—	1	43	—	1
7	—	10	7	—	—
3	—	—	4	—	—
7	—	—	7	—	—
—	2	—	—	3	—
24	—	—	24	—	—
23	—	—	25	—	—
108	2	1	110	3	1

Note: The figures shown above covers those wells which produce oil during the month of December of any year.

PRODUCTION & DISPOSAL OF GAS BY COMPANIES & FIELDS
DURING THE YEARS 64—1969 (in mill. standard cubic feet)

TABLE (49)

Year	Production & Utilisation	B. P. C.		M-P-C.	I. P. C.		
		Zubair	Rumaila		Bai Hassan	Jambur	Kirkuk
1964	Production	18720	82000	2808	9074	6715	68566
	% Utilised	8.82	3.00	18.00	40.66	50.65	11.72
1965	Production	22589	79827	2490	10250	8066	71542
	% Utilised	8.81	3.34	21.35	37.13	48.71	8.24
1966	Production	22810	105208	2064	9835	10048	68710
	% Utilised	11.49	2.88	27.39	34.33	57.35	8.86
1967	Production	23309	98875	2124	7804	6436	62771
	% Utilised	7.99	2.69	20.58	34.90	65.27	10.10
1968	Production	22257	74271	1920	11348	15969	87945
	% Utilised	5.07	3.74	23.79	25.13	60.55	11.79
1969	Production	20294	78611	1854	13250	16487	87104
	% Utilised	5.66	3.95	25.77	31.41	52.41	16.17

QUANTITY & VALUE OF CRUDE OIL EXPORTS ACCORDING TO
COUNTRIES DURING 1969—1970

TABLE (50)

COUNTRIES	Value (in 000'IDs.)		Quantity (000 Tons)	
	1969	1970	1969	1970
Austria	—	767	—	145
Australia	5180	7175	1043	1404
Belgium	6699	4949	1348	964
Brazil	15235	16186	3069	3198
Canary Islands	6260	4225	1260	829
Ireland	1516	607	305	120
Singapore	—	314	—	63
Switzerland	—	95	—	19
France	73636	60263	14834	11795
Creece	14731	18124	2967	3540
U. A. R.	92	—	18	—
Holland	33199	26077	6688	5131
Italy	89440	112338	18015	22076
Japan	1026	—	206	—
Lebanon	5256	8145	1059	1596
Malaysia	418	—	85	—
Mozambique	3970	4023	800	785
Portugal	7438	10748	1498	2103
South Africa	9548	11439	1922	2244
Spain	9757	9169	1966	1800
Philippines	—	147	—	29
Sweden	1256	1878	252	354
Syrian A. R.	6478	6240	1305	1231
Thailand	4607	786	928	156
Turkey	9915	14565	1966	2843
United Kingdom	15933	13070	3210	2522
U. S. A.	3714	5789	748	1146
Uruguay	828	1064	197	208
F. R. of Germany	10511	14234	2116	2791
Yugoslavia	6546	9702	1318	1903
D. R. of Yeman	1428	2088	288	406
Colombia	94	—	19	—
Rumania	120	2120	24	410
Tunisia	1354	1738	273	343
Total	346185	368065	69727	72154

Source: The Central Bank of Iraq.

QUANTITIES OF REFINERIES PRINCIPAL PRODUCTS (IN LONG TON) DURING THE YEAR 1970

TABLE (51)

1			
PRODUCTS	K/3	Wand	
Motor Spirit	—	—	
Kerosene	24168	89000	
Gas Oil (1)	78964	54000	
Diesel Oil	—	—	
Fuel Oil	—	255000	
Banker 'C' Oil	25691	—	
Turbine Aviation Spirit	—	—	
Lubrication Oil	—	—	
Asphalt (Bitumen) (2)	—	—	
Liquid Gas (kg-)	—	—	

2			
Qayara	Muftiya	Daura	Total
2700	27431	345309	375440
—	20206	435162	568536
9400	10231	381505	534100
—	—	222499	222499
—	137790	340024	732814
—	—	688546	714237
—	—	74956	74956
—	—	46542	46542
27900	1311	67324	96535
—	—	21678440	21678440

1- Including light & Heavy Gas Oil.

2- Including Asphalt (Bitumen) of degrees:

180/200

85/100

60/70

Source: Ministry of Oil & Minerals.

OIL PRODUCTS SOLD IN IRAQ

TABLE (52)

Year	Quantities Mill-Gallons
1960	466
1961	504
1962	521
1963	528
1964	606
1965	662
1966	745
1967	714
1968	760
1969	763
1970	785

Source: Ministry of Oil & Minerals.

EXPORTS OF OIL PRODUCTS (Mill. Gallons)

TABLE (53)

Year	Asphalt in tons	Naftha	Slight fuel	Gase		Motor Spirits	Lubricat- ing Oil (Ton)
				Oil	Kerosene		
1960-1961	1525	—	1.78	0.68	0.01	0.32	—
1961-1962	5298	—	2.22	0.14	—	—	—
1962-1963	20047	—	1.92	0.12	—	0.18	—
1963-1964	9537	—	1.79	0.11	—	0.43	—
1964-1965	13151	—	1.68	10.10	—	—	—
1965-1966	15678	—	1.86	24.73	—	—	—
1966-1967	40195	—	1.61	23.55	—	—	—
1967-1968	41532	—	6.30	24.31	—	—	—
1968-1969	39364	4.71	17.43	27.71	—	—	—
1969-1970	57015	4.72	15.54	21.87	—	—	330
1970-1971	48318	1.62	14.86	17.06	0.03	—	11567

Source: Ministry of Oil & Minerals

WAGES PAID TO EMPLOYEES (National & Foreign) OF THE OIL COMPANIES IN IRAQ FOR THE YEARS 1961-1969 (000' I.D.S.)

TABLE (54)

I DETAILS	1961		1962	
	Wages	No.	Wages	No.
WORKERS				
Skilled & Semi Skilled				
Males	4374	7864	4428	7895
Females	40	71	44	71
Total	4414	7935	4472	7966
Unskilled:				
Males	1188	3609	1062	3071
Females	9	26	8	21
Total	1197	3635	1070	3092
General Total	5611	11570	5542	11058
Technicians:				
Males	1855	640	1658	554
Females	—	—	11	6
Total	1855	640	1669	560
Administrators(1)				
Males	737	274	773	263
Females	42	20	34	16
Total	779	294	807	279
General Total	2634	934	2476	839
Doormen & Guards:				
Males	62	183	79	241
Females	—	—	—	—
Total	62	183	79	241
General Total	62	183	79	241
Grand Total	8307	12687	8097	12138

(1) The wages paid to technician & administrators include (247368) ID-paid to foreign officials whose number in 1967 was (87)

Con.

1963		1964		1965	
Wages	No.	Wages	No.	Wages	No.
4256	7611	4414	7604	4525	7611
39	66	64	104	65	102
4295	7677	4478	7708	4590	7713
958	2719	933	2540	869	2350
7	20	11	28	12	30
965	2739	944	2568	881	2380
5260	10416	5422	10276	5471	10093
1322	447	1298	431	1325	409
9	4	15	7	16	8
1331	451	1313	438	1341	417
746	242	1097	331	1099	315
31	14	57	27	56	22
777	256	1154	358	1155	337
2108	707	2467	796	2496	754
82	245	101	287	104	281
82	245	101	287	104	281
82	245	101	287	104	281
7450	11368	7990	11359	8071	11128

1966		1967		1968		1969	
Wages	No.	Wages	No.	Wages	No.	Wages	No.
4574	7607	4760	7587	4296	5938	5938	6057
71	110	70	106	63	86	41	58
4645	7717	4830	7693	4359	6024	4419	6115
844	2257	869	2219	730	1620	690	1492
9	22	8	19	5	12	4	10
853	2279	877	2238	735	1632	694	1502
5498	9996	5707	9931	5094	7656	5113	7617
1252	394	1224	376	1252	376	1274	407
15	6	14	5	14	5	28	8
1267	400	1238	381	1266	381	1302	415
1156	324	1132	304	1099	276	619	155
55	22	50	20	45	16	2	1
1211	346	1182	324	1144	292	621	156
2478	746	2420	705	2410	673	1923	571
104	279	109	274	90	198	84	178
104	279	109	274	90	198	84	178
104	279	109	274	90	198	84	178
8080	11021	8236	10910	7594	8527	7120	8366

AVERAGE OF WAGES PAID BY THE IRAQI PETROLEUM COMPANIES TO ALL EMPLOYEES (000' I.Ds.) (1)
TABLE (55)

DETAILS	1961	1962	1963
<u>WORKERS</u>			
<u>Skilled & Semi Skilled:</u>			
Males	556.2	560.8	559.2
Females	563.6	624.2	588.2
General Average	556.2	561.4	559.4
<u>Unskilled:</u>			
Males	329.1	345.8	352.5
Females	364.1	383.2	355.8
General Average	329.3	346.1	352.5
<u>Technicians:</u>			
Males	2899.9	2992.8	2956.6
Females	200.0	1766.2	2290.8
General Average	2900.0	2979.7	2950.7
<u>Administrators:</u>			
Males	2687.0	2937.3	3084.1
Females	2072.5	2149.7	2191.9
General Average	2644.8	2892.1	3035.3
<u>Doormen & Guards:</u>			
Males	336.3	328.1	335.8
Females	—	—	—
General Average	336.3	328.1	335.8

1964	1965	1966	1967	1968	1969
580.5	594.5	601.3	627.3	723.5	722.8
618.3	641.8	641.3	661.2	735.2	721.9
581.0	595.1	601.9	627.8	734.1	722.8
367.4	369.7	373.9	391.6	451.0	462.5
376.2	384.7	409.9	415.6	446.3	493.2
367.5	369.9	374.2	391.8	451.1	492.7
3011.6	3240.1	3177.7	3254.5	3332.1	3132.4
2142.4	2062.0	2417.5	2746.6	2825.4	3526.6
2997.7	3217.5	3166.6	3247.8	3325.5	3140.0
3314.9	3488.7	3566.8	3722.3	3984.7	3995.2
2107.0	2540.7	2510.6	2511.9	2813.5	2364.0
3223.8	3426.8	3499.6	3647.6	3920.5	3984.7
351.4	371.3	373.8	396.7	459.2	472.3
351.4	371.3	373.8	396.7	459.2	472.3

1- Average wages paid to technicians and administrators include average wages paid to foreigners which amounted to 3092 ID. in 1967.

Source: C. S. O. Reports of the Industrial Statistics.

PRICES OF SOME PETROLEUM PRODUCTS IN IRAQ

TABLE (56)

PRODUCTS	Gallons/fils	Tin/fils
Motor Spirit	150	756
Gas Oil	45	336
Diesel Oil	20	—
Kerosene	35	—
Fuel Oil	10	—
Banker 'C' Oil	8	—

TABLE (57)

LUBRICATING OILS	40 Gallons Drum (imperial) ID. fils	5 Gallons Drum (imperial) ID. fils
Agriculture pumps oils SAE/40.50.60	14.300	—
Motor Oils SAE/10w. 20w. 30w. 40,50,60	18.000	2.500
Diesel Oil S/3	28.300	3.700
Motors & Machins oil 400C	19.550	2.600
Grease Different types	0.203*	—

* fils per 1 Kg. tin.

10 CONSTRUCTION



TOTAL NO. OF LICENCES FOR BUILDING AND REPAIRS AND
APPROXIMATE COST

TABLE (58)

Years	No. of Licences for Buildings	No. of Licences for Repairs	Approximate cost for Buildings (000'IDs.)	Approximate cost for Repairs (000'IDs.)	Total No. of Licences	Total of Approximate cost (000'IDs.)
1960	14771	6834	17093	372	21605	17465
1961	18034	8632	23943	387	26666	24330
1962	18040	8043	22004	348	26083	22352
1963	18149	7281	21206	302	25430	21508
1964	21878	6834	26369	366	28712	26735
1965	24200	6391	28756	335	30591	29091
1966	26998	5830	30867	332	32828	31199
1967	22427	5435	26139	307	27862	26446
1968	23742	6744	29436	380	30486	29816
1969	25664	6284	35278	415	31948	35693
1970	26570	8101	36351	490	34671	36841

Note: 1960—1965 Including private sector & part of Government sector;
1966—1967 private sector only.

Source: Annual reports of construction statistics.

TOTAL NO. OF PRIVATE LICENCES FOR BUILDINGS (under construction and completed) FOR THE YEARS 1961—1969

TABLE (59)

Years	No. of Licences granted	No. of buildings under construction	No. of buildings Completed
1961	17767	16454	15728
1962	17747	17680	17663
1963	18017	17662	16315
1964	21746	20505	20551
1965	23979	23616	22152
1966	27013	26983	27727
1967	22425	21949	20946
1968	23742	22631	23025
1969	25664	23749	23247
1970	26570	—	—

GOVERNMENT & PRIVATE CONSTRUCTION, AVERAGE NO. OF EMPLOYEES, WAGES PAID & COST OF MATERIALS USED FOR THE YEARS 1961—1969

TABLE (60)

Years	Sector	Average No. of establishments	Average No. of employees	Annual wages paid in (000'IDs-)	Cost of materials used in (000'IDs*)
1961	Private	3441	32019	7032	19559
	Government	438	29044	8021	13701
	Total	3879	61063	15053	33260
1962	Private	3441	27026	6065	18498
	Government	412	22637	5600	11756
	Total	3853	49663	11666	30254
1963	Private	3557	27095	5988	18804
	Government	270	16011	4229	9340
	Total	3827	43106	10217	28144
1964	Private	4578	32059	7098	22636
	Government	433	15139	4002	7304
	Total	5011	47198	11100	29940
1965	Private	4888	39813	8741	25236
	Government	721	21319	5957	10253
	Total	5609	61132	14698	35489
1966	Private	5422	43674	10264	28382
	Government	652	26355	7836	12178
	Total	6074	70029	18100	40560
1967	Private	3976	31979	7750	21046
	Government	518	27159	8952	18278
	Total	4494	59138	16702	39324
1968	Private	4596	35611	9313	27537
	Government	737	30543	9838	22982
	Total	5333	66154	19151	50519
1969	Private	5009	40046	11206	30293
	Government	753	31270	10487	20694
	Total	5762	71316	21693	50987

Note: Figures of 1970 not available.

Source: Annual reports of construction statistics.

11

**TRANSPORT AND
COMMUNICATIONS**

PUBLIC ROADS & SIDE ROADS IN IRAQ (Km.)

TABLE (61)

KIND OF ROAD	1969	1970
Paved Road:	2450	2756
New Pavement	1994	2036
Old Pavement	3667	3485
Earth Road	328	328
Embankment & culverts under construction:-		
Pavement	635	529
Embankment & culverts	254	253

NO. OF CARS IN IRAQ DURING 1960—1970

TABLE (62)

Year	Lorries	Buses	Taxis	Private	Total
1960	14938	5099	9524	30612	60173
1961	16569	5590	14242	34306	70707
1962	18529	6281	13941	35227	73978
1963	17328	7200	14713	36202	75443
1964	17473	6498	14446	35804	74221
1965	26014	8388	16154	38350	88906
1966	27543	9505	17643	40557	95248
1967	30054	9100	18373	42292	99819
1968	31306	9150	18906	42642	102004
1969	32496	9202	20007	44229	105934
1970	32731	9244	21396	46024	109395

NO. OF PASSENGERS, THEIR FEES & NO. OF PASSENGERS
KILOMETRES FOR THE YEARS 1960—1970

TABLE (63)

ROUTES	60/61	61/62	62/63	63/64	64/65	65/66	66/67	67/68	68/69	69/70
BAGHDAD—BASRA:										
No. of Passengers (in Thou.)	1429	1370	1183	1091	1046	931	921	757	744	1628
Fares (Thou. I-Ds.)	503	484	380	371	298	244	245	206	297	665
Passenger's Kilometre (Thou.)	317908	327305	249837	217859	203847	182215	166152	150081	178355	245943
BAGHDAD—NINEVAH:										
No. of Passengers (in Thou.)	429	573	668	700	699	659	652	520	472	829
Fares (Thou. I-Ds.)	218	257	264	290	284	354	346	285	288	211
Passenger's Kilometre (Thou.)	129338	170780	191939	195813	192415	229622	207288	184973	160344	124704
BAGHDAD—ARBIL:										
No. of Passengers (in Thou.)	686	761	673	492	415	427	470	419	407	612
Fares (Thou. I-Ds.)	142	161	121	58	37	35	41	39	29	53
Passenger's Kilometre (Thou.)	97447	101115	88047	51382	32202	33548	34614	35678	28148	124209
TOTAL:										
No. of Passengers (in Thou.)	2544	2704	2524	2283	2160	2017	2043	1697	1623	3069
Fares (Thou. I-Ds.)	863	902	765	719	618	633	632	529	614	929
Passengers' Kilometre (Thou.)	544693	599200	529823	465053	428464	445385	408054	370732	366847	494856

Note: Passenger's Kilometres for the year 1969/1970 are estimated.

NO. OF STATIONS AND THE LENGTH OF THE RAILWAY LINES

TABLE (64)

Year	No. of Stations	Main Routes (km.)	Siding Routes (km.)	Total
1964/65	117	1603	297	1900
1965/66	117	1620	295	1915
1966/67	117	1620	295	1915
1967/68	117	2166	308	2474
1968/69	117	2231	297	2528
1969/70	117	2231	297	2528

GOODS CARRIED BY RAILWAYS

TABLE (65)

Year	Quantities of goods (000) Tons	Fees (000 ID.)	Ton Kilometres (000)
1960/61	2029	4263	783064
1961/62	2082	4003	629136
1962/63	1708	3359	642799
1963/64	1867	3366	703265
1964/65	2061	3785	789672
1965/66	2534	4230	984139
1966/67	2634	4484	1066273
1967/68	2864	4788	1123215
1968/69	2789	4720	1032140
1969/70*	2960	6131	1127760

(*) Ton Kilometres for the year 1969/70 are estimated.

NO. OF FLIGHT IN BAGHDAD & BASRA AIRPORTS OF ALL AIR-
LINES DURING THE YEARS 1961—1970

TABLE (66)

YEAR	IRAQI AIRWAYS			ARABIAN AIRWAYS		
	Baghdad Airport	Basra Airport	Total	Baghdad Airport	Basra Airport	Total
1961	540	507	1047	345	116	461
1962	1167	409	1576	359	102	461
1963	1188	644	1832	691	83	774
1964	1227	343	1570	799	12	811
1965	1066	621	1687	746	5	751
1966	1137	1232	2369	632	16	648
1967	1044	565	1609	607	7	614
1968	1281	548	1829	663	3	666
1969	1445	615	2060	622	2	624
1970	1527	—	1527	712	—	712

FOREIGN AIRWAYS			TOTAL		
Baghdad Airport	Basra Airport	Total	Baghdad Airport	Basra Airport	Total
1586	491	2077	2471	1114	3585
1424	444	1868	2950	955	3905
1396	437	1833	3275	1164	4439
1252	395	1647	3278	750	4028
1094	212	1306	2906	838	3744
830	673	1503	2599	1921	4520
905	4	909	2556	576	3132
1205	385	1590	3149	936	4085
1269	179	1448	3336	796	4132
959	—	959	3198	—	3198

NO. OF EMBARKED, DISEMBARKED & TRANSIT PASSENGERS
IN THE AIRPORTS OF BAGHDAD AND BASRA

TABLE (67)

YEAR	BAGHDAD AIRPORT			BASRA AIRPORT		
	Transit	Embarked	Dis-embarked	Transit	Embarked	Dis-embarked
1961	6087	53839	51696	5896	15963	16437
1962	7452	52095	56792	1786	15586	16066
1963	7758	64762	59260	6191	18123	18205
1964	10981	69683	69057	7208	16585	16085
1965	6831	65703	65839	6291	11132	11889
1966	—	65968	67802	7027	11954	12053
1967	—	63928	63441	8186	10177	9203
1968	—	97879	99337	8614	12663	12226
1969	—	104041	106514	9065	12684	13258
1970	—	100796	98566	8071	11045	11606

NO. G.R.T. & N.R.T. OF SHIPS ENTERED THE PORTS OF BASRA
AND UMKUSIR DURING 1960—1970 IN (000) TONS

TABLE (68)

Year	No. of Vessels	N-R-T	G-R-T
1960	1022	2806	4840
1961	997	2587	4538
1962	931	2643	4609
1963	911	2583	4479
1964	987	2782	4845
1965	1082	3023	5276
1966	1197	3146	5567
1967	1117	3427	5829
1968	1123	3400	5978
1969	940	3251	5750
1970	791	3031	5375

Source: Transport & Communication Statistics Dept.

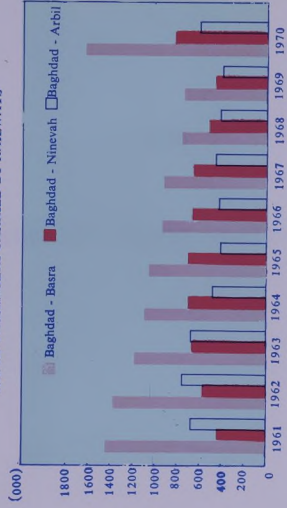
SUMMARY OF IRAQI LINE'S VESSELS

TABLE (69)

DETAILS	1968	1969	1970
No. of voyages	8	5	5
Weight tons	60181	47923	38077
Freight tons	85526	64576	49977
Net freight fees (I-D)	894212	636914	544248

Source: Iraqi Maritime transport Co.

NO. OF PASSENGERS CARRIED BY RAILWAYS





FOREIGN TRADE STATISTICS

Year	Country	Value
1940	USA	100
1940	UK	80
1940	France	60
1940	Germany	40
1940	Japan	20
1940	Canada	10
1940	Other	5
1941	USA	110
1941	UK	85
1941	France	65
1941	Germany	45
1941	Japan	25
1941	Canada	15
1941	Other	10
1942	USA	120
1942	UK	90
1942	France	70
1942	Germany	50
1942	Japan	30
1942	Canada	20
1942	Other	15
1943	USA	130
1943	UK	95
1943	France	75
1943	Germany	55
1943	Japan	35
1943	Canada	25
1943	Other	20
1944	USA	140
1944	UK	100
1944	France	80
1944	Germany	60
1944	Japan	40
1944	Canada	30
1944	Other	25
1945	USA	150
1945	UK	105
1945	France	85
1945	Germany	65
1945	Japan	45
1945	Canada	35
1945	Other	30
1946	USA	160
1946	UK	110
1946	France	90
1946	Germany	70
1946	Japan	50
1946	Canada	40
1946	Other	35
1947	USA	170
1947	UK	115
1947	France	95
1947	Germany	75
1947	Japan	55
1947	Canada	45
1947	Other	40
1948	USA	180
1948	UK	120
1948	France	100
1948	Germany	80
1948	Japan	60
1948	Canada	50
1948	Other	45
1949	USA	190
1949	UK	125
1949	France	105
1949	Germany	85
1949	Japan	65
1949	Canada	55
1949	Other	50
1950	USA	200
1950	UK	130
1950	France	110
1950	Germany	90
1950	Japan	70
1950	Canada	60
1950	Other	55

Year	Country	Value
1940	USA	100
1940	UK	80
1940	France	60
1940	Germany	40
1940	Japan	20
1940	Canada	10
1940	Other	5
1941	USA	110
1941	UK	85
1941	France	65
1941	Germany	45
1941	Japan	25
1941	Canada	15
1941	Other	10
1942	USA	120
1942	UK	90
1942	France	70
1942	Germany	50
1942	Japan	30
1942	Canada	20
1942	Other	15
1943	USA	130
1943	UK	95
1943	France	75
1943	Germany	55
1943	Japan	35
1943	Canada	25
1943	Other	20
1944	USA	140
1944	UK	100
1944	France	80
1944	Germany	60
1944	Japan	40
1944	Canada	30
1944	Other	25
1945	USA	150
1945	UK	105
1945	France	85
1945	Germany	65
1945	Japan	45
1945	Canada	35
1945	Other	30
1946	USA	160
1946	UK	110
1946	France	90
1946	Germany	70
1946	Japan	50
1946	Canada	40
1946	Other	35
1947	USA	170
1947	UK	115
1947	France	95
1947	Germany	75
1947	Japan	55
1947	Canada	45
1947	Other	40
1948	USA	180
1948	UK	120
1948	France	100
1948	Germany	80
1948	Japan	60
1948	Canada	50
1948	Other	45
1949	USA	190
1949	UK	125
1949	France	105
1949	Germany	85
1949	Japan	65
1949	Canada	55
1949	Other	50
1950	USA	200
1950	UK	130
1950	France	110
1950	Germany	90
1950	Japan	70
1950	Canada	60
1950	Other	55

BALANCE OF TRADE (EXCEPT EXPORTS OF CRUDE OIL
(in 000'IDs.)

TABLE (70)

YEARS	EXPORTS			Imports	Balance of Trade (+—)
	Local	Re-Exports	Total		
1960	7976	3020	10996	138915	127919—
1961	7874	5382	13256	145672	132416—
1962	19317	4090	23407	128762	105355—
1963	16726	3154	19880	113992	94112—
1964	15291	2887	18178	147448	129270—
1965	18119	3240	21359	162114	140755—
1966	21486	3224	24710	176092	151382—
1967	18501	3198	21699	151243	129544—
1968	21415	4541	25956	144165	118209—
1969	22002	3937	25939	157169	131230—
1970	22565	2164	24729	181651	156922—

Source: Foreign Trade Statistics Dept.

IMPORTS, EXPORTS, TRANSIT & G. N. P. (CURRENT PRICES)

TABLE (71)

(in 000' IDs.)

Years	G. N. P.	Local exports	% 2:1	Imports	% 4:1	Transit	Difference 4—2
	(1)	(2)	(3)	(4)	(5)	(6)	(7)
1960	470030	7976	2	138915	30	1791	130939
1961	520860	7874	2	145672	28	1318	137798
1962	564550	19317	3	128762	29	1305	109445
1963	562500	16726	3	113992	20	1254	97266
1964	637500	15291	2	147448	23	1666	132157
1965	701380	18119	3	162608	23	1730	144489
1966	750510	21486	3	176092	23	5884	154606
1967	760090	18501	2	151243	20	11504	132742
1968	832910	21415	3	144165	17	20492	122750
1969	879550	22002	3	157169	18	20356	135167
1970	—	22565	—	181651	—	27941	159086

Source: Committee of the Statistical pocket book.

EXPORTS TO MAIN COUNTRIES & THE REST OF THE WORLD
IN (000' I.D.)

TABLE (72)

COUNTRY	1960	1961	1962	1963
Ceylon	71	141	494	451
India	958	761	752	820
Saudi Arabia	105	521	920	780
Kuwait	847	648	10	1296
Jordan	11	101	194	339
Lebanon	850	1139	1785	2202
U. K.	701	233	1135	943
U. S. A.	812	575	2069	1809
U. S. S. R.	387	733	1125	2030
A. E. R.	75	70	119	74
P. R. of China	548	519	1411	1609
F. R. of Germany	277	60	2423	384
Japan	100	111	133	114
Other Countries	3081	2263	6747	3875
Total	7976	7874	19317	16726

Source: Foreign Trade Statistics.

1964	1965	1966	1967	1968	1969	1970
534	572	881	649	446	555	414
1458	1333	1268	998	1065	1268	1333
651	1027	1152	1495	2327	465	405
1592	1623	1354	2470	2662	2331	2648
154	104	1485	230	300	633	339
2549	2544	3361	2255	2851	3914	2826
535	721	529	550	297	279	480
750	777	1004	1092	817	891	1533
681	1032	697	1084	1483	1467	2030
394	1954	1349	1005	1792	2640	3301
1755	1790	2362	1903	1934	1871	1441
133	154	244	75	99	71	159
83	139	216	313	112	130	58
4021	4349	5584	4382	5230	5487	5598
15291	18119	21486	18501	21415	22002	22565

**IRAQ'S IMPORTS ACCORDING TO GEOGRAPHICAL
DISTRIBUTION IN (000'ID.s)**

TABLE (73)

COUNTRIES	1960	1961	1962	1963
Arab Countries:				
a. Arab Common Market				
Arab Egypt R.	19	104	186	326
Syrian A. R.	108	528	2043	2533
Jordan	98	713	533	659
Kuwait	10	—	8	1
Sudan	1111	1126	272	329
Yemen	—	—	—	—
Total	1346	2471	3042	3848
b. Other Arab Countries:				
Lebanon	3925	2323	1631	1855
Saudi A.	4	3	1	102
Moroco	74	44	2	19
Other Countries	84	80	77	95
Total	4087	2450	1711	2071
Asian Countries:				
India	2674	2294	2808	2929
Ceylon	7320	7601	7019	7753
Pakistan	1918	2884	1709	763
Turkey	298	12	9	26
Japan	6524	6924	5628	2433
P. R. of China	2578	2259	3305	4478
Malaysia	1324	1382	1938	2659
Other Countries	4878	5245	4358	1432
Total	27514	28601	26774	22473

1964	1865	1966	1967	1968	1969	1970
984	1214	1652	1916	2922	3697	3421
2262	333	378	703	1548	2029	2200
923	761	1566	871	1126	1184	986
8	10	412	280	584	1006	641
1075	1093	384	321	19	49	76
—	1	—	—	—	1	12
5252	3412	4392	4091	6199	7966	7336
2817	3699	3648	2836	4362	3745	4971
350	381	270	883	1	2	478
195	210	91	73	44	73	126
134	142	147	224	196	159	122
3496	4612	4192	4022	4625	3986	5785
2829	3082	3864	2892	5856	4809	5281
7543	4246	10367	3841	4078	5236	3846
3424	919	721	1279	1073	1072	2221
81	603	842	1004	250	606	2920
6132	9128	10818	9234	12972	12645	5606
5188	6043	7576	6257	6112	7093	8174
3361	4888	2828	3616	3891	3547	6746
4196	2603	2970	2667	1914	1752	2149
32754	31512	39993	30790	36146	36760	36943

(Con.)

Countries	1960	1961	1962	1963
European Countries:				
a- Common Market Countries				
F. R. of German	12462	13752	14278	10877
France	74	59	72	403
Italy	2728	3746	3882	3384
Others	12222	11670	10582	8047
Total	27486	29227	28814	22711
b- Free Trade Area Countries:				
U. K.	34127	32321	21228	18003
Danemark	805	1014	1252	982
Sweden	3203	4013	3956	3211
Others	4877	4277	4596	4372
Total	43012	41625	31032	26568
c- Euro-Social-Countries:				
Bulgaria	760	551	873	997
Czechoslovakia	3509	3325	3306	2733
Hungaria	1637	1056	1072	1361
Poland	1013	1509	1438	1374
U. S. S. R.	2625	7572	8693	9346
Yugoslavia	633	534	715	828
G. D. R.	823	885	998	785
Others	636	821	1320	1185
Total	11636	16253	18415	18609
Other Euro- Countries	400	528	539	462
African Countries	1187	1413	1951	2244
American & Oceanic Countries:				
U. S. A.	15750	15657	14896	12428
Cuba	687	595	433	584
Australia	5181	5681	648	1470
Canada	542	1112	436	491
Others	87	59	71	33
Total	22247	23104	16484	15006
General Total	138915	145672	128762	113992

1964	1965	1966	1967	1968	1969	1970
12533	15275	21272	15520	10404	5867	6459
1652	2277	3702	6042	7404	7988	10715
4742	5284	8379	7860	7441	12304	5461
9314	9736	9403	8005	6856	7836	13349
28241	32572	42756	37427	32105	33995	35984
18852	17531	23938	19421	12629	18814	21822
897	931	1291	2012	1619	1194	3683
3444	3388	4646	3941	4265	4613	7410
4718	6091	6367	5098	6175	5930	7677
27911	27941	36242	30472	24688	30551	40592
1038	1217	1409	1488	2107	2397	3487
3291	8770	2938	2410	2595	3187	4710
1580	1455	1288	1356	1402	2158	2030
2898	7428	6132	1379	1856	2205	5129
7596	11788	9195	12417	12551	15514	19263
951	1648	1216	671	1052	1576	1307
1374	1271	1166	961	1290	1447	2877
1268	1479	2075	1655	2061	2263	689
19996	35056	25419	22337	24914	30747	39492
582	893	1192	1211	1313	1929	2449
2048	1835	1474	1273	1997	1559	1618
20215	19914	17213	13889	5988	5783	6532
2332	2697	590	314	477	1600	625
3781	873	1797	4639	5063	748	2458
1374	247	202	295	279	845	1700
69	550	630	483	371	700	137
27681	24281	20432	19620	12178	9676	11452
147448	162114	176092	151243	144165	157169	181651

IRAQ'S PRINCIPAL EXPORTS FOR 1970

TABLE (74)

ARTICLES	Value (I.D.)
Dates	9278354
Fruit & Vegetables	453465
Cement	2569227
Textile fibers and Waste	1711721
Crude animal and Veg. mats. Nes	1305285
Metalliferous ores and metal Scraps	1022531
Hide, Skin and futskin, unders sed	1693934
Petroleum products	929054
Gas, Natural and manufactured	459100
Plastic mats, Regenerated Cellulose and artificial resins	296227
Clothes of all Kinds	85969
Footwear	78095
Textile yarn fabrics etc.	148723
Mineral manufactures Nes	115934
Furnitures	26047
Cereal and its Preparations	607962
Oil seeds, Oil nuts, Oil kernels	291915
Miscellaneous food preps	194715
Paper, paperboard and manufactures	86020
Medical, pharmaceutical prods.	16505
Sugar, Sugar preps and honey	91999

Source: Foreign Trade Statistics 1970.

IRAQ'S PRINCIPAL IMPORTS FOR 1970

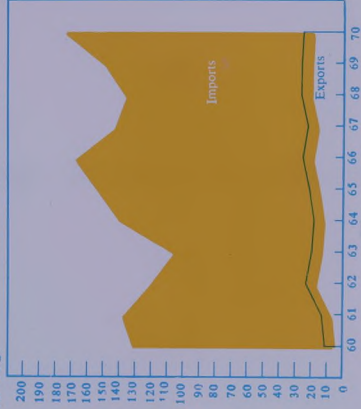
TABLE (75)

ARTICLES	Value (I.D.)
Non electric machines	28808715
Iron, Steel and Products	21223353
Textile Yarn fabric etc.	17760348
Machines, Elect.	14309698
Road, Rail Vehicles and aircraft	12076715
Sugar, Sugar preps, and Honey	7927169
Coffe, Tea, Cocoa, Spices and others	6052072
Fixed veg. Oils and fats	6134022
Paper, paperboard and manufactures thereof	5939112
Medical, pharmaceutical products	5481604
Rubber manufactures nes	3587933
Dairy products and Eggs	3114997
Mineral products	5758146
Fruit and vegetables	4193410
Chemical materials and products	3888445
Cement, Ceramic tiles	3668724
Med, Opt, photo, measur, control equip., Film, Watches & Clocks	2659240
Wood, Cork manufactures (Ex- furnitures)	2258594
Sliver, Platinuma and other rare metals	2025729

Source: Foreign Trade Statistics 1970.

Mill. Ds.

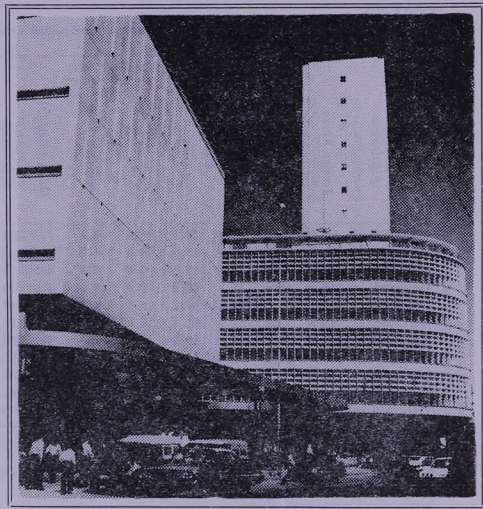
EXPORTS & IMPORTS IN MILL. DS.





13

BANKS, INSURANCE & COMPANIES



The Central Bank of Iraq & Rafidain Bank.

CONSOLIDATED STATEMENT OF THE CENTRAL BANK OF IRAQ
(in mill. IDs.)

TABLE (76)

End of Period	Assets							Total Assets or Liabilities
	Claims on Government				Loans & Adv.			
	Foreign Assets	Govt. Securities	Loans and Advances	Total	Specialized Banks	Commercial Banks	Other Assets(1)	
Dec- 1960	91.2	7.1	17.1	24.2	6.1	6.7	4.2	132.4
Dec- 1961	77.8	19.7	18.3	38.0	4.8	4.2	5.6	130.4
Dec- 1962	68.2	32.0	23.1	55.1	3.0	3.4	8.5	138.2
Dec- 1963	104.3	18.6	21.7	40.3	2.8	3.6	3.6	154.6
Dec- 1964	88.3	31.3	28.8	60.1	5.5	4.7	4.7	163.3
Dec- 1965	83.3	53.9	37.4	91.3	6.6	2.1	4.9	188.2
Dec- 1966	115.1	59.2	17.3	76.5	5.6	6.3	4.5	208.0
Dec- 1967	131.5	57.9	37.5	95.4	4.7	0.4	8.1	240.1
Dec- 1968	160.3	36.7	48.4	85.1	3.4	0.3	2.6	251.7
Dec- 1969	168.8	43.7	68.2	111.9	3.8	3.8	3.1	291.4
Dec- 1970	173.5	66.4	64.1	130.5	4.0	1.9	3.4	313.3

1) Including Silver Account-

2) Net currency outside C. B. I.

3) Reserve Money = currency in circulation + Deposits (Commercial and specialized Bank and sarrafs)-

Source: The Central Bank of Iraq.

End of Period	Liabilities							Total Assets or Liabilities
	Deposits				Foreign Liabilities	Capital Reserves & Provisions	Other Liabilities	
	Currency in Circulation(2)	Commercial Banks & Sarrafs	Specialized Banks	Govt. & Semi Govt.				
Dec- 1960	79.5	9.9	0.9	23.2	90.3	1.6	15.9	1.4
Dec- 1961	78.9	9.0	0.5	16.1	88.4	3.9	18.0	4.0
Dec- 1962	83.8	9.8	0.6	14.0	94.2	4.0	20.5	5.5
Dec- 1963	101.5	8.7	1.1	14.7	111.3	4.7	23.1	0.8
Dec- 1964	103.5	10.6	0.6	16.8	114.7	5.0	26.1	0.7
Dec- 1965	116.7	12.6	1.3	22.6	130.6	4.4	29.9	0.7
Dec- 1966	126.1	18.0	1.2	19.3	145.3	8.7	33.7	1.0
Dec- 1967	134.4	30.2	1.5	16.0	166.1	21.2	35.7	1.1
Dec- 1968	144.8	28.4	1.5	22.3	174.7	13.6	39.9	1.2
Dec- 1969	166.6	19.2	1.1	41.4	186.9	15.8	45.8	1.5
Dec- 1970	178.9	37.4	1.0	32.1	217.3	11.7	50.3	1.9

CONSOLIDATED STATEMENT OF COMMERCIAL BANKS
(in Mill. I.Ds.)

TABLE (77)

End of Period	Assets								Total Assets or Liabilities
	Reserves		Claims on						
	Currency	Current Deposits With C.B.I.	Foreign Assets	Govt. (1) & Semi Govt.	Specialized Banks	Private Sector(2)	Bank Premises	Other Assets	
Dec- 1960	6.1	9.5	16.4	10.4	—	51.3	3.3	2.0	99.0
Dec- 1961	3.7	8.5	12.7	6.3	0.5	59.8	3.6	3.1	98.2
Dec- 1962	3.9	7.9	12.6	7.2	0.4	63.1	4.2	5.0	104.3
Dec- 1963	5.2	8.6	13.7	3.8	0.8	64.9	4.6	4.2	105.8
Dec- 1964	4.8	10.2	9.4	5.4	2.1	68.7	4.9	5.4	110.9
Dec- 1965	4.1	13.2	10.0	18.1	2.4	62.4	4.9	8.2	123.3
Dec- 1966	5.4	18.4	7.0	35.8	1.7	64.2	4.9	8.7	146.1
Dec- 1967	5.7	29.7	5.7	39.9	1.4	58.0	3.7	4.9	149.0
Dec- 1968	6.8	27.8	9.0	55.0	3.6	63.0	3.8	5.5	174.5
Dec- 1969	5.1	19.2	9.2	83.2	4.9	62.1	4.7	3.1	191.5
Dec- 1970	5.7	36.9	8.8	63.0	5.1	87.2	5.3	3.8	215.8

1) Including Securities deposited at C-B-I.

2) Including Credit extended to private sector and bonds & Securities owned by Commercial Banks.

3) Including imprest account of Rafidain Bank.

Source: The Central Bank of Iraq.

	Liabilities							
	Deposits			Govt. & Semi Govt.	Foreign Liabilities	Credit from (3) C-B-I	Capital Reserves and Provisions	Other Liabilities
	Private Sector		Current					
	Current	Time & Saving	Deposits Vs. Guar. & L/C					
	30.2	21.2	7.6	16.1	0.8	6.7	12.9	3.5
	29.5	24.4	8.7	12.0	1.0	4.2	14.2	4.2
	33.5	28.4	6.5	10.6	1.0	3.4	15.8	5.1
	30.5	29.0	7.9	11.6	0.9	3.6	17.1	5.2
	29.5	30.1	8.3	13.3	0.7	4.7	17.3	7.0
	31.0	36.0	9.2	16.6	0.9	2.1	18.2	9.3
	34.3	40.1	9.0	20.9	1.4	6.3	20.7	13.4
	35.9	43.4	8.2	31.4	0.7	0.4	22.5	6.5
	39.4	51.4	10.2	37.8	1.0	0.3	23.7	10.7
	42.8	58.0	11.6	40.1	1.4	3.8	24.9	8.9
	43.5	64.3	8.6	56.8	1.2	1.9	28.4	11.1

CONSOLIDATED STATEMENT OF SPECIALIZED BANKS
(in Mill. ID's)

TABLE (78)

End of Period	Assets					Deposits	
	Currency & Deposits at C.B.I. and Commercial Banks	Claims on			Total Assets or Liabilities	Private	
		Government	Private Sector	Other Assets		Current(I)	
Dec- 1960	1.7	1.4	40.2	3.2	46.5	—	—
Dec- 1961	2.3	—	40.8	3.6	46.7	0.1	—
Dec- 1962	1.9	—	42.7	3.6	48.2	0.1	—
Dec- 1963	1.7	—	45.3	3.7	50.7	0.1	—
Dec- 1964	1.3	0.1	53.6	3.3	58.3	0.2	—
Dec- 1965	1.9	—	60.6	2.9	65.4	0.4	—
Dec- 1966	1.9	0.3	65.2	2.2	69.6	0.4	—
Dec- 1967*	2.1	0.6	68.2	2.2	73.1	0.5	—
Dec- 1968	2.6	1.0	72.8	2.5	78.9	0.6	—
Dec- 1969	1.8	3.8	78.6	2.8	87.0	1.1	—
Dec- 1970	1.8	3.5	71.8	2.9	80.0	0.8	—

1) Includes Clients deposits against guarantees.

(*) As from, 1967 loans of Govt. & Semi Govt. Institutions were added to the item of credit from Govt. & Semi Govt. rather than to other liabilities, as was the practice.

Sector	Liabilities					
	Credit from					
	Time & Saving	Govt. & Semi Govt.	Govt. & Semi Govt.	C.B.I.	Commercial Banks	Capital, Reserves and Provisions
—	5.6	7.9	6.1	—	24.2	2.7
—	7.1	8.1	4.9	0.5	25.4	0.6
0.2	8.6	8.0	3.4	0.4	26.5	1.0
0.2	9.2	4.7	2.8	0.8	32.2	0.7
0.4	10.4	2.2	5.6	2.1	33.6	3.8
0.8	14.0	2.3	7.1	2.4	34.7	3.7
1.4	17.0	1.9	5.6	1.7	35.7	5.9
1.3	20.7	6.2	4.7	1.4	36.6	1.7
1.9	24.0	5.9	3.5	3.6	38.3	1.1
1.6	29.6	6.1	3.9	4.5	39.6	0.6
0.8	24.1	5.7	4.0	5.4	37.3	1.9

BALANCES OF LOANS EXTENDED BY SPECIALIZED BANK
1960—1970 (in 000' ID\$-)

TABLE (79)

1		1960-61	1961-62	1962-63	1963
DETAILS					
END OF PERIOD					
Agricultural Bank		5992	5641	5435	5332
Industrial Bank(1)		2995	3231	3583	3826
Estate Bank		22983	24731	25069	26993
Mortgage Bank		4314	4972	4967	5104
Co-operative Bank		163	443	813	1246
Total		36447	39018	39867	42501

2		1964	1965	1966	1967	1968	1969	1970
5819		5661	5814	6143	6421	6272	7955	
3980		3926	4845	4263	3596	3281	2752	
33722		39331	42450	42960	45295	48847	60212	
5535		5876	6315	7771	9146	10636	—	
1639		2472	3336	4544	5672	8831	—	
50695		57266	62760	63681	70130	77867	70919	

Notes: (1) As from 1966 Industrial Bank Loans include long-term and short-term industrial loans and other advances'

(2) With effect from 18th April 1970 the co-operative Bank was amalgamated with the Estate Bank and the Mortgage Bank with Rafidain Bank-
Source: The Central Bank of Iraq Bulletin-

PREMIUMS OF GENERAL INSURANCE ISSUED*

TABLE (80)

1		1966	
BRANCH		Amount (in 000'ID\$-)	%
Fire		682	17.31
Marine (Cargo)		1474	37.40
Marine (Hull and Aviation)		239	6.06
Motor (Compulsary)		514	13.05
Motor (Comprehensive)		388	9.85
Engineering Insurance		316	8.02
Accidents (Miscellaneous)		328	8.31
Total		3941	100.00

2		1967		1968		1969	
Amount (in 000'ID-)	%	Amount (in 000'ID-)	%	Amount (in 000'ID-)	%	Amount (in 000'ID-)	%
741	18.20	799	17.56	852	17.07		
1470	36.07	1653	36.34	1867	37.41		
249	6.12	265	5.84	597	11.95		
694	17.03	568	12.49	605	12.12		
316	7.76	302	6.63	288	5.77		
213	5.22	581	12.76	375	7.51		
391	9.60	381	8.38	407	8.17		
4074	100.00	4549	100.00	4991	100.00		

* 1- General Insurance means all types of Insurance (Except life insurance and Capital redemption)-

2- The issued Insurance is the direct insurance-

INDIVIDUAL LIFE INSURANCE

TABLE (81)

Kind of Insurance	1968		1969	
	Amount (000'IDs-)	%	Amount (000'IDs-)	%
1- Endowment				
Endowment	4787	63.31	6743	71.50
Endowment with Bonus	1415	18.70	1149	12.20
Children's Endowment & Deferred	609	8.06	721	7.60
Joint Life	390	5.16	481	5.00
2- Paid up life Insurance (for all kinds of Insurance)	197	2.61	224	2.40
3- Temporary	67	0.89	60	0.60
4- Whole life	57	0.75	44	0.40
5- Others	40	0.52	5	0.04
Total	7562	100.00	9427	100.00

TOTAL PAYABLE AMOUNTS OF CLAIMS FOR INDIVIDUAL LIFE INSURANCE (ID.)

TABLE (82)

Kind of Claims	1968	1969
Death	45056	42868
Maturity	56659	91873
Annuities	9277	5930
Surrender of Policies	55825	72120
Total	166817	212791

GROUP LIFE INSURANCE

TABLE (83)

Year	Amount of Insurance (ID-)	TOTAL PAYABLE CLAIMS (ID-)			Total
		Group Insurance	Post office	Subscribers Insurance	
1968	2206680	—	32685	677	33362
1969	2987098	5176	34870	995	41041

Source: State Organization of Insurance.

DISTRIBUTION OF PAID CAPITAL OF THE STOCKS & LIMITED LIABILITIES Cos. ACCORDING TO THE ECONOMIC SECTORS

TABLE (84)

Year	Paid Capital In (000'IDs-)							Others & com- merce	1262
	No. of Cos.	Industry	Agricul- ture	Construc- tion	Trans- port	Com- merce	Industry		
1960	25	1165	—	300	50	649	5	500	
1961	22	677	—	68	—	238	—	1574	
1962	62	2233	25	40	50	762	50	261	
1963	45	747	45	31	71	621	51	6	
1964	53	314	35	30	63	409	37	7	
1965	34	635	13	—	16	125	13	23	
1966	66	655	42	50	46	188	34	18	
1967	41	448	23	7	17	46	71	—	
1968	33	279	—	9	11	29	12	14	
1969	24	55	2	—	6	12	11	—	
1970	28	103	5	—	10	15	7	—	

NO. OF THE STOCKS & LIMITED LIABILITIES Cos. ACCORDING
THE ECONOMIC SECTORS & YEAR OF ESTABLISHMENT
TABLE (85)

Year	Total	Industry	Agriculture	Construction	Transport	Commerce	Industry & commerce	Others
1960	25	6	—	2	5	9	1	2
1961	22	10	—	3	—	8	—	1
1962	62	26	1	2	8	17	3	5
1963	45	15	1	3	7	13	2	4
1964	53	16	1	1	9	22	3	1
1965	34	20	2	—	2	6	2	2
1966	65	30	5	1	11	13	3	2
1967	42	21	4	1	4	7	2	3
1968	33	18	—	3	5	5	2	—
1969	24	11	1	—	4	3	4	1
1970	28	15	1	—	4	6	2	—

Source: 1. A Report on the general survey of standing Co. in Iraq.
2. D. G. of Registration & Supervision of the Co.

THE BUDGETARY SITUATION (000' ID's.)

TABLE (86)

Year	Revenue	Expenditure	Ratio R x 100 exp.	Surplus (+) or Deficit (-)
1961/1962	120700	119188	101.3	+1512
1962/1963	114709	128401	89.3	-13692
1963/1964	126773	149025	85.1	-22252
1964/1965	145965	180125	81.0	-34160
1965/1966	179131	187534	95.5	-8403
1966/1967	158648	192427	82.4	-33779
1967/1968	210361	205506	102.4	+4855
1968/1969	220419	241933	91.1	-21514
1969/1970	250591	288546	86.8	-37955

Source: Annual Abstracts of Statistics.

BALANCE OF PAYMENTS DURING 1960-1969 (in mill. IDs)
TABLE (87)

ITEMS	1960	1961	1962	1963	1964	1965
A. Current Account:						
1- Exports-Visible			225.4	259.9	282.0	293.7
(a) Oil	222.9	224.5	21.7	18.9	17.9	21.2
(b) Other	10.7	11.8	247.1	278.8	299.9	314.9
Total	233.6	236.3				
2- Exports-Invisible	20.0	17.1	16.2	20.5	28.4	32.9
Total 1+2	253.6	253.4	263.3	299.3	328.3	347.8
3- Imports-Visible			-1.8	-1.6	-0.7	-0.9
(a) Oil	-14.6	-12.1	-127.7	-111.0	-148.5	-161.8
(b) Other	-125.9	-138.2	-129.5	-112.6	-149.2	-162.7
Total	-140.5	-150.3				
4- Imports-Invisible	-120.2	120.0	-122.6	-144.3	-168.4	-177.9
Total 3+4	-260.7	-270.3	-252.1	-256.9	-317.6	-340.6
Balance of Trade (Visible)	93.1	86.0	117.6	166.2	150.7	152.2
5- Transfer Payments (Net)	-3.6	-2.4	-2.1	-0.1	-0.1	—
Balance of Current Account	-10.7	-19.3	9.1	42.3	10.6	7.2
B. Capital Account:			-12.3	-21.2	-15.1	-17.7
1- Private Capital Movement	+3.7	+0.1	+9.8	+38.9	+10.5	+2.7
2- Loans and Long-term obligations	-2.6	+0.8				
3- Other Long-term	-1.8	+9.9	+0.8	+3.3	+0.2	+0.3
Balance of Capital Account	-0.7	+10.8	-1.7	+21.0	-4.4	-14.7
Balance of Current and Capital Accounts	-11.4	-8.5	+7.4	+63.3	+6.2	-7.5
C. Balancing Item	-13.2	-0.7	-14.8	-22.4	-25.8	+4.4
D. Monetary Movements:(2)						
1- Foreign Assets	+29.4	+4.3	+12.5	-40.6	+24.5	+8.4
2- Monetary Gold	-4.6	+4.9	-5.1	-0.3	-5.0	-3.1
3- Short-term Obligations	0.20	—	—	—	+0.1	-2.2
Balance of Monetary Movements	+24.6	+9.2	+7.4	-40.9	+19.6	+3.1
Balance of Monetary Movements and other long-term (deficit or surplus)	+22.8	+19.1	+8.2	-37.6	+19.8	+3.4

1. Revised Figures.

2. Monetary Movements— Assets: Increase (—) Decrease (+)
Liabilities: Increase (+) Decrease (—)

Source: The Central Bank of Iraq Bulletin.

Con.

1966	1967	1968(1)	1969
308.9	272.0	345.0	347.4
26.5	23.8	25.9	25.9
335.4	295.8	370.9	373.3
34.8	33.9	36.6	46.0
370.2	329.7	407.5	419.3
-0.9	-0.8	-1.1	-1.3
-174.5	-150.4	-144.0	-156.3
-175.4	-151.2	-145.1	-157.6
-188.3	-158.2	-209.6	-209.4
-363.7	-309.4	-354.7	-367.0
160.0	144.6	225.8	215.7
-0.5		1.6	1.9
6.0	20.3	54.4	54.2
-7.8	-4.1	-2.7	-5.0
+1.6	+13.7	-0.6	-4.4
	-0.5	-0.5	-0.1
-6.2	+9.1	-3.8	-9.5
-0.2	+29.4	50.6	44.7
-9.0	-17.8	-37.4	-45.1
-27.4	-6.1	+1.4	-6.3
-0.1	-3.2	-35.1	0.1
+36.7	-2.3	+19.5	6.6
+9.2	-11.6	-14.2	0.4
+9.2	-12.1	-14.2	0.4

184

AMOUNTS AND PERCENTAGE OF THE INCOME TAX PAYABLE
DURING 1969/70 ACCORDING TO THE MAIN HEADS OF INCOME
TAX (in 000'IDs)

TABLE (88)

HEADS OF INCOME TAX	Amount (IDs)	%
Income Tax—Public Sector	11639	47.6
Income Tax—Private Sector	4616	18.9
Income Tax from the Officials of the Public Sector	540	2.2
Income Tax from the Persons of the Private Sector	654	2.7
Income Tax from the Official & Employees of the Government	1609	6.6
Income Tax for the National Defence Purposes	2781	11.4
Deduction from the wages & Salaries for National Defence Purposes	2333	9.5
Profits of the sale of shares & Bonds	266	1.1
Total	24438	100.0

INCOME TAX, LEGACY & INHERITANCE TAX PAYABLE DURING
TABLE (89) 1965—1970 (in 000' IDs)

Year	Income Tax	Legacy & Inheritance Tax
1965/66	10067	639
1966/67	11562	785
1967/68	12928	513
1968/69	15168	615
1969/70	24438	735

Source: Annual Abstracts of Statistics.

185

IRAQI PUBLIC DEBT AS AT THE END OF DECEMBER (in 000'ID's)
TABLE (90)

LOANS		1961	1962	1963
INTERNAL LOANS	Iraqi Government Bonds	9400	8600	7800
	Iraqi Treasury Bills	20000	33000	17000
	Total	29400	41600	24800
FOREIGN LOANS	Oil Companies Advance	409	—	—
	Soviet Loan	6684	16477	25045
	Kuwait Loan	—	—	30000
	American Agricultural Surplus Agreement 1963	—	—	1594
	American Agricultural Surplus Agreement, 1966	—	—	—
	Export and Import Bank's Loan	—	—	—
	IBRD Loan	—	—	—
	Total	7023	16477	56639
GENERAL TOTAL		36493	58077	81439

Source: Central Bank of Iraq.

1964	1965	1966	1967	1968	1969	1970
6000	10993	10987	10980	7973	17967	23960
30000	50000	65000	75000	75000	75000	85000
36000	60993	75987	85980	82973	92967	108960
—	—	—	6855	6855	3428	17143
32480	34503	35358	36637	36540	32645	30001
30000	30000	30000	30000	30000	30000	30000
4142	3941	3716	3492	3267	3042	2818
—	—	—	574	458	342	227
875	2368	3384	3794	3467	3316	2910
—	—	690	2379	3121	3735	4708
67497	70812	73148	83731	83708	76508	87807
103497	131805	149135	169711	166681	169475	196767

15

**ECONOMIC PLANS
AND
NATIONAL DEVELOPMENT PLAN**

EXPENDITURE OF THE PROVISIONAL ECONOMIC PLAN
IN (000'IDs)

TABLE (90)

SECTIONS	1959	1960	1961
Section One-Agriculture	2635	10819	7338
Section Two-Industry	971	5681	5130
Section Three-Transport & Communications	1202	7922	12008
Section Four-Housing and Resorts	1597	9908	8446
Section Five-Building	2055	8242	9859
Section Six-Health	261	980	600
Section Seven-Culture	406	2052	2453
Section Eight-Reserve	161	1961	5669
Section Nine-Repayment of Loans	—	—	19
General Total	9288	47565	51522

Note: The Planning Vide the Provisional Economic Plan ended on 17/12/1961 and followed by the Detailed Economic Plan for the years 1961/62—1965/66 with effect from 18/12/1961.

EXPENDITURE OF THE DETAILED ECONOMIC PLAN IN (000'IDs)
TABLE (91)

SECTIONS	1961/62	1962/63	1963/64	1964/65
Section One-Agriculture	2344	6302	4506	6733
Section Two-Industry	1942	10327	9529	16516
Section Three-Transport and Communication	2109	15793	18320	18860
Section Four-Building & Housing	8838	26383	21222	30594
Section Five-Settlements of Loans and their Interests	160	492	676	1033
Section Six-Planning Board	—	—	—	39
Section Seven-North Rehabilitation	—	—	—	1308
Section Eight-Municipalities and Local Administration	—	—	—	191
General Total	15395	59297	54255	75275

EXPENDITURES OF FIVE ECONOMIC PLAN IN (000'IDs*)

TABLE (93)

SECTIONS	65/66	66/67	67/68	68/69	69/70
Section One-Agriculture	5997	8499	11024	13244	17506
Section Two-Industry	15128	29288	23722	18164	17592
Section Three-Transport and Communication	12443	15098	13600	9924	10092
Section Four-Buildings and Social Services	16194	12047	13285	12956	11831
Section Five-Planning Departments & Follow-up System	57	48	43	75	162
Section Six-Ministry of Defence- Productive Systems	7516	16738	5000	5653	17325
Section Seven-International Obligations	2490	1039	2240	4390	7806
Section Eight-grant to the ministry of Finance	—	—	—	—	25000
Section Nine-paid-up Capital of the Iraqi National Oil Co.	—	—	—	—	10000
Section Ten-Settlement of Deliquent advanas	—	—	—	—	53435
Total	59825	82757	68914	64406	170749

Source: Annual Abstract of Statistics.

THE NATIONAL DEVELOPMENT PLAN FOR THE FISCAL YEARS
(1970—1974)

GOVERNMENT SECTOR'S INVESTMENT ALLOCATIONS

TABLE (94)

SECTOR	Total Plan Allocations in 000' IDs*
Agriculture	336485
Industry	207250
Transport & Communications	96580
Buildings and Services	120118
Institutions of Planning, Follow-up, Statistics, SF (ADPE) project and other Institutions	8800
Loans granted to Governmental Departments and Organizations Including Interests Born by the Plan	82353
International Obligations	46265
Miscellaneous Investment Expenditure	54649
General Total	952500

INVESTMENTS IN THE SELF-FINANCED PUBLIC SECTOR IN

(000'IDs*)

TABLE (95)

SECTOR	Total Estimated plan Allocations
Agriculture	8000
Industry, Mining and Electricity	212000
Transport and Communications	54290
Buildings and Services	47500
General Total	321790

SOURCES OF FINANCING INVESTMENTS IN THE CENTRAL
GOVERNMENT SECTOR IN (000'ID\$)

TABLE (95)

SOURCES	Estimates during planed years
The Plan's Share at 50% from Tax on Oil Companies	828940
The Plan's Share from other Mineral wealth resources	6000
Recovery of loans granted to government Establishments and Organizations	4234
Interest on loans granted to government Establishments and Organizations	267
Participation of Government Establishments & Organizations in financing the Plan	3500
The Plan's Share from the profits of Establishments, Organiza- tions and affiliated Enterprises	11538
Recovery of amounts spent from the development budgets to Establishments, Organizations and affiliated Enterprises	6114
50% of reserves (Allocations) of Annual Capital consumption for Establish- ments, State Organizations and affiliated enterprises	7500
Participation of Establishments, State Organization and affiliated Enterprises in financing their projects in the Central Plan	4457
Domestic Loans	10000
Foreign Loans	68950
Other Sources	1000
Total	952500

Source: Ministry of Planning-Economic Dept.

NO. OF PUPILS AND TEACHERS IN THE PRIMARY SCHOOLS*

TABLE (97)

Year	NO. OF PUPILS CLASSIFIED BY SEX				Total	No. of Teachers
	Male	%	Female	%		
60/61	556442	73.2	204021	26.8	760463	25130
61/62	595232	72.9	220990	27.1	816222	27292
62/63	610191	71.8	239491	28.2	849682	29325
63/64	615109	70.9	252174	29.1	867283	31390
64/65	657414	71.0	268529	29.0	925943	36020
65/66	678819	70.4	285508	29.6	964327	42878
66/67	692049	70.8	285533	29.2	977582	42478
67/68	698320	70.5	292398	29.5	990718	45201
68/69	718461	70.6	298589	29.4	1017050	47058
69/70	736177	70.7	304793	29.3	1040970	48307

(*) Including private & foreign schools also.

Source: The source of the Data for the years 1960/61—1968/69 is the C.S.O. Social Statistics Dept. The source of the Data for the years 1969/70 is the Ministry of Education.

NO. OF STUDENTS IN THE SECONDARY SCHOOLS*

TABLE (98)

Year	Male	%	Female	%	Total
60/61	111380	80.1	27644	19.9	139024
61/62	127360	80.2	31497	19.8	158857
62/63	135616	78.6	37036	21.4	172652
63/64	151741	78.7	41062	21.3	192803
64/65	167952	78.3	46426	21.7	214378
65/66	184528	78.3	51282	21.7	235810
66/67	187459	77.0	55976	23.0	243435
67/68	193081	76.0	60952	24.0	254033
68/69	215144	75.3	70577	24.7	286721
69/70	216981	71.6	86069	28.4	303050

(* Including private schools also.

Source: The source of the Data for the years 196/61—1968/69 is the C.S.O. Social Statistics Dept. The source of the Data for the years 1969/70 is the Ministry of Education.

NO. OF GRADUATES FROM THE SECONDARY SCHOOLS
(intermediate and secondary)*

TABLE (99)

Year	INTERMEDIATE			SECONDARY		
	Male	Female	Total	Male	Female	Total
60/61	11279	3201	14480	4408	1073	5481
61/62	15992	4038	20030	4743	1413	6156
62/63	11267	5378	16645	4744	1170	5914
63/64	17434	5674	23108	9797	2173	11970
64/65	14365	4695	19060	7087	2484	9571
65/66	14259	5099	19358	6751	2385	9136
66/67	14229	5472	19701	9778	2979	12757
67/68	22271	8004	30275	11221	2487	13708
68/69	18040	6848	24888	19386	5198	24584
69/70	20190	8634	28824	7928	2640	10568

* Including the governmental and Private schools and off-schools students.

NO. OF STUDENTS ADMITTED & GRADUATED FROM THE
UNIVERSITIES OF IRAQ

TABLE (100)

Year	UNIVERSITY OF BAGHDAD					
	No. of students admitted			No. of students Graduated		
	Male	Female	Total	Male	Female	Total
60/61	2497	823	3320	1172	408	1580
61/62	2822	1133	3955	2134	631	2765
62/63	2944	1048	3992	2084	545	2629
63/64	4300	1615	5915	1959	680	2639
64/65	5101	2105	7206	1901	860	2761
65/66	4014	1796	5810	2317	914	3231
66/67	3642	1358	5000	2548	1213	3761
67/68	1902	739	2641	3168	1722	4890
68/69	4649	1940	6589	3090	1584	4674
69/70	2875	1064	3939	3296	1456	4752

	UNIVERSITY OF MOSUL						UNIVERSITY OF BASRA		
	No. of Students Admitted			No. of Students Graduated			No. of Students Admitted		
	Male	Female	Total	Male	Female	Total	Male	Female	Total
	33	19	52	—	—	—	—	—	—
	42	23	65	—	—	—	—	—	—
	48	20	68	—	—	—	—	—	—
	317	59	376	—	—	—	—	—	—
	597	112	709	27	25	52	663	153	816
	580	84	664	26	23	49	672	160	832
	833	145	968	112	43	155	749	116	865
	966	164	1130	259	43	302	603	113	716
	791	160	951	410	71	481	861	218	1079
	387	99	486	474	99	573	332	111	443

Con.

Year	UNIVERSITY OF BASRA			MUSTANSIRIYA UNIVERSITY		
	No. of students graduated			No. of students admitted		
	Male	Female	Total	Male	Female	Total
60/61	—	—	—	—	—	—
61/62	—	—	—	—	—	—
62/63	—	—	—	—	—	—
63/64	—	—	—	1428	307	1735
64/65	—	—	—	735	22	757
65/66	—	—	—	1048	163	1211
66/67	—	—	—	1296	177	1473
67/68	406	106	512	1884	204	2088
68/69	461	117	578	2160	211	2371
69/70	477	91	568	1739	105	1844

Source: Annual Abstract of Statistics.

MUSTANSIRIYA UNIVERSITY No. of Students Graduated			UNIVERSITY GF SULAIMANIYA No. of Students Admitted			No. of Students Graduated		
Male	Female	Total	Male	Female	Total	Male	Female	Total
—	—	—	—	—	—	—	—	—
—	—	—	—	—	—	—	—	—
—	—	—	—	—	—	—	—	—
—	—	—	—	—	—	—	—	—
—	—	—	—	—	—	—	—	—
863	211	1074	—	—	—	—	—	—
459	52	511	—	—	—	—	—	—
720	93	813	444	71	515	—	—	—
783	88	871	366	46	412	—	—	—

NO. OF ADMITTED & GRADUATED STUDENTS FROM THE PRIMARY
TEACHERS TRAINING SCHOOLS

TABLE (101)

1 ADMITTED STUDENTS					
Year	Male	%	Female	%	Total
60/61	1565	63.3	906	36.7	2471
61/62	1499	62.6	895	37.4	2394
62/63	1360	49.4	930	40.6	2290
63/64	3455	71.8	1355	28.2	4810
64/65	725	53.4	632	46.6	1357
65/66	401	47.9	437	52.1	838*
66/67	1124	59.5	764	40.5	1888*
67/68	2026	54.5	1693	45.5	3719*
68/69(1)	—	—	156	100.0	156*
69/70(2)	—	—	—	—	—

2 GRADUATED STUDENTS				
Male	%	Female	%	Total
1825	70.9	749	29.1	2574
2382	74.6	809	25.4	3191
1392	63.5	799	36.5	2191
1456	57.1	1095	42.9	2551
1836	59.0	1274	41.0	3110
2503	58.2	1798	41.8	4301
544	50.0	543	50.0	1087
432	50.2	429	49.8	861
1053	61.4	661	38.6	1714
1907	56.2	1487	43.8	3394

(* Including the failure in the first class-

(1) During the academic year 1968/69 no male students were admitted-

(2) During the academic year 1969/70 no students were admitted-

NO. OF STUDENTS IN THE VOCATIONAL SCHOOLS*

TABLE (102)

Year	Male	%	Female	%	Total
60/61	4776	59.9	3199	40.1	7975
61/62	4520	55.8	3581	44.2	8101
62/63	4600	57.2	3444	42.8	8044
63/64	4196	52.6	3777	47.4	7973
64/65	4344	54.2	3667	45.8	8011
65/66	3846	50.4	3780	49.6	7626
66/67	4271	49.1	4423	50.9	8694
67/68	5649	55.3	4568	44.7	10217
68/69	6380	65.4	3373	34.6	9753
69/70	7132	71.4	2862	28.6	10053

(* Including Agricultural, Technical, Commercial & Home arts schools-

SUMMARY OF THE PROGRESS OF EDUCATION IN IRAQ
DURING THE YEARS 1960/61—1969/70

TABLE (103)

DETAILS	60/61	61/62	62/63	63/64	64/65	65/66	66/67	67/68	68/69	69/70
Kindergartens:										
No. of Schools	110	110	107	103	112	124	114	128	125	130
No. of Pupils	11595	11538	12830	12633	13514	15307	15222	15553	14530	15697
No. of Teachers	271	305	326	338	372	479	474	505	551	619
Primary:										
No. of Schools	3679	3987	4018	3943	4318	4544	4773	5035	5141	5183
No. of Pupils	760463	816222	849681	867283	925943	964327	977582	990718	1017050	10404970
No. of Teachers	25120	27292	29335	31390	36020	42878	42478	45201	47058	48307
Secondary:(1)										
No. of Schools	383	412	446	506	535	585	689	757	840	860
No. of Students	139024	158857	172652	192803	214378	235810	243435	254033	285721	303050
No. of Teachers	3715	4148	4562	4924	5764	7231	7938	8311	9428	10114
Vocational:										
No. of Schools	44	43	43	46	45	37	36	45	43	46
No. of Students	7975	8101	8044	7973	8011	7626	8694	10217	9753	10053
No. of Teachers(2)	765	820	869	879	865	677	784	871	1069	1046
Teacher Training:										
No. of Schools	29	28	27	28	29	21	21	21	21	21
No. of Students	8313	7383	7230	8671	6867	4389	8229	6542	5442	3628
No. of Teachers(2)	512	452	402	501	442	221	211	368	264	198
Higher Education:										
No. of Universities	2	2	2	3	3	5	5	5	5	5
No. of Students	12260	14358	14725	19811	24239	28367	34926	35361	41189	37290(3)
No. of Teachers	852	938	1085	908	1348	1341	1552	1654	2068	2158

Notes:

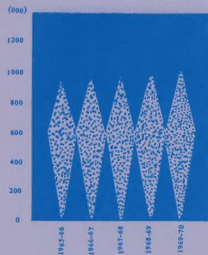
- (*) Including Intermediate and preparatory stage.
- (2) Including Arab and foreign teachers.
- (3) Including students of the private Colleges.

TABLE 1

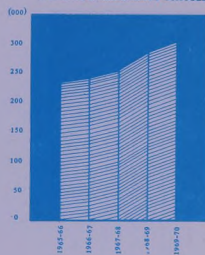
Primary and Secondary Schools

Year	Primary Schools	Secondary Schools
1965-66	1,000	220
1966-67	1,000	230
1967-68	1,000	240
1968-69	1,000	250
1969-70	1,000	260

PUPILS IN PRIMARY SCHOOLS



STUDENTS IN SECONDARY SCHOOLS



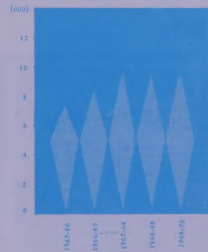
STUDENTS IN VOCATIONAL SCHOOLS



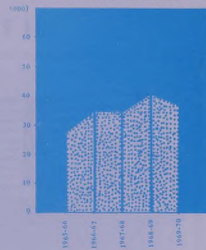
STUDENTS IN UNIVERSITIES



STUDENTS IN VOCATIONAL SCHOOLS

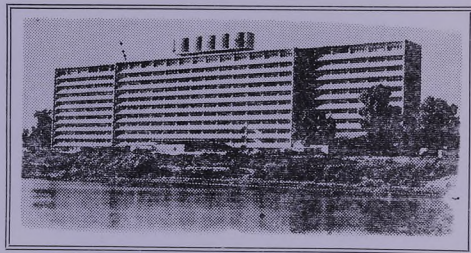


STUDENTS IN UNIVERSITIES



17

HEALTH



Medical City Establishment.

NO. OF HOSPITALS, DISPENSARIES & OTHERS HEALTH CENTRES
IN IRAQ

TABLE (104)

Year	Government Hospital		Private hospitals		Dispensaries	health centres others
	No.	Beds	No.	Beds		
1960	110	12309	15	413	616	—
1961	119	13272	14	416	705	—
1962	120	13493	15	431	802	—
1963	116	13950	15	451	801	—
1964	124	14590	18	514	809	—
1965	131	14893	19	531	781	—
1966	134	15374	19	530	893	—
1967(*)	127	15020	19	522	867	—
1968	132	15832	17	495	933	—
1969	135	17060	18	570	909	103
1970	134	17776	16	478	987	237

Note: Seven hospitals were closed & amalgamated with others during 1967.

Source:(1) Report of health progress in Iraq.

(2) Ministry of Health.

MEDICAL & PARA MEDICAL PROFESSIONS IN IRAQ
TABLE (105)

1	Year	Doctors	Dentists	Pharmacists	Pharmacists Assistants	Nurses
	1960	1643	195	455	116	857
	1961	1761	220	459	115	996
	1962	1889	250	476	156	962
	1963	1694	230	528	174	1041
	1964	1775	248	164	145	1006
	1965	1738	271	166	149	1074
	1966	1736	274	206	146	1235
	1967	2081	271	185	175	1169
	1968	2113	296	178	187	1275
	1969	2424	309	196	203	1425
	1970	2890	379	855	306	1718

2	Year	Dressers	X-Ray Radiographers	Laboratory Assistants	Health officials	Health inspectors	Health visitors
	1960	1172	116	124	662	113	—
	1961	1187	123	148	843	100	—
	1962	1382	174	184	940	148	—
	1963	1442	181	229	970	167	—
	1964	1409	183	225	857	183	117
	1965	1464	208	192	934	207	92
	1966	1493	197	194	1013	206	103
	1967	1645	207	231	1032	198	175
	1968	1767	227	227	1043	239	165
	1969	1902	225	250	1060	224	185
	1970	2489	233	356	1193	277	230

VITAL STATISTICS
LIVE BIRTHS & DEATHS REGISTERED IN
IRAQ FOR THE YEAR 1970 BY MUHAFADHAS

TABLE (106)

Muhafadahs	Live Births	DEATHS	
		Infant Deaths	Deaths*
Ninevah	13908	331	2683
Dhok	1290	2	182
Suliamaniya	2015	7	533
Arbil	2286	43	562
Kirkuk	3632	23	731
Diala	4020	10	824
Anbar	2971	56	456
Baghdad	69684	1717	12295
Waset	2492	11	1513
Babylon	3466	167	1410
Kerbela	4639	268	2403
Qadissiya	3013	9	1999
Muthanna	1794	3	669
Maysan	2488	10	1540
Thi-Qar	3260	7	2734
Basra	9307	110	2815
Total	130265	2774	33349

* Including Infant Deaths also.
Source: Ministry of Health.

RATE OF BIRTH, DEATH & NATURAL INCREASE PER THOUSAND
OF INHABITANT POPULATION (Excluding Iraqi Abroad)

TABLE (107)

Year	CRUDE RATE PER (1000)		
	Births	Deaths	Natural Increase
1957	48.6	21.0	27.6
1960	48.9	19.2	29.7
1965	48.9	17.7	31.2
1966	48.6	16.8	31.8
1967	48.3	16.5	31.8
1968	48.0	16.2	31.8
1969	47.8	16.0	31.8
1970	47.5	16.4	31.1

Source: U.N. expert report (UEDA)

18
SOCIAL STATISTICS



Ministry of labour & Social Affairs.

NO. OF UNIONS' THEIR BRANCHES & MEMBERS IN IRAQ

TABLE (108)

Name of the Union	No. of Branches in Muhafadhas	Members in (000)
Railways and aviation	8	19.5
Posts, Telegraphs, Presses & information	13	15.0
Cigarettes & Foodstuff industry	14	20.0
Leather & Plastic goods & Animal wealth	10	31.0
Constructional Projects & Buildings	14	80.0
General & Social Services	12	70.0
Motor Car Transport & Their Assistants	14	65.0
Oil & Minerals	8	19.0
Water & Electricity, Municipalities and Amanat Al-Asima	10	18.0
Mechanics	10	12.0
Spinning & Weaving	9	24.0
Agriculturalists	14	13.5
Ports	1	4.5
Total	137	391.5

NO. OF INDUSTRIAL & COMMERCIAL ENTERPRISES LIABLE TO LABOUR LAW

TABLE (109)

Enterprises	1967	1968	1969	1970
Industry:				
No. of Enterprises	5723	5368	8770	9238
No. of Labourers	89238	162746	148089	136884
Commerce:				
No. of Enterprises	2266	5469	4339	4420
No. of Labourers	47997	108747	77637	64005

Source: Annual abstracts of Statistics.

NO. OF PERSONS RECEIVED SOCIAL INSURANCE BENEFITS &
AMOUNTS PAID TO THEM (in IDs)

TABLE (110)

Year	OLDAGE ¹		SURVIVORS ²		DEATH AID	
	Amount Paid	Persons No.	Amount Paid	Persons No.	Amount Paid	Persons No.
1960	20040	624	8814	526	7607	748
1961	19582	562	12614	624	7222	1468
1962	34788	687	16153	735	6247	1273
1963	35191	672	19342	766	6730	1085
1964	83511	912	24080	670	6515	1323
1965	76932	957	22660	459	4134	832
1966	12525	173	8710	147	728	147
1967	3951	104	19645	424	1600	200
1968	33983	523	35931	532	2136	267
1969	8791	378	30992	468	2199	236
1970	54409	1935	12001	623	7841	526

- Notes: 1- Including amounts of pensions & remuneration of old age
 2- Including amounts of pensions & remuneration of survivor
 3- Including Maternity benefit & aid
 4- Including labour accident, unfit for Employment etc. remuneration and aids
 5- According to the new labour Law (service termination Remuneration)

Source: Annual abstracts of Statistics

MATERNITY ³		SICKNESS		DISABLE PENSION	
Amount Paid	Persons No.	Amount Paid	Persons No.	Amount Paid	Persons No.
67788	27167	452	114	2560	109
76672	15508	251	90	6420	206
76288	15449	411	115	7511	224
76878	15378	682	201	10952	266
67969	15524	1315	343	10621	233
45026	10766	1926	518	9090	146
13329	2665	875	159	3216	43
337	65	5351	530	2517	93
277	53	7833	297	8993	77
267	46	10101	429	3473	81
629	121	27151	1143	952	68

Con.

LABOUR ⁴ ACCIDENTS		PAID ACCORDING ⁵ TO THE LAW NO- 27 FOR 1956		TOTAL	
Amount Paid	Persons No.	Amount Paid	Persons No.	Amount Paid	Persons No.
177173	21592	269656	13808	560855	65994
65323	18721	139450	6782	331530	44838
62391	17646	228487	8207	434809	44836
48198	13823	246858	10644	447091	43295
42991	13499	360845	13426	600738	46510
31709	8822	381477	11720	575510	34740
6053	1971	144797	4256	190832	9683
12259	545	160099	2008	205768	3969
19446	250	158184	2008	266783	4007
15954	316	227767	4846	299544	6800
23450	680	158166	3365	284599	8461

NO. OF PERSONS RECEIVED BENEFITS FROM THE SOCIAL
SERVICE CENTRES IN IRAQ

TABLE (111)

Year	No. of Youths & Girls	No. of old-Age	No. of Blinds	Tailoring & Kit- chen classes	literacy classes	Kinder garten	childhood & welfare
1963	1766	277	71	621	745	—	—
1964	842	326	66	636	715	—	—
1965	1271	300	10	675	739	220	—
1966	889	274	64	627	294	840	—
1967	889	297	—	511	459	800	—
1968	888	362	73	547	480	1022	—
1969	908	308	72	825	904	1424	1815
1970	870	319	82	2292	1610	2389	2995

Source: Ministry of Labour and social affairs.

CO-OPERATIVES, THEIR MEMBERS & PAID UP CAPITALS

TABLE (112)

Societies	1965	1966	1967	1968	1969	1970
Housing:						
No. of Societies	40	46	34	26	25	9
No. of Members	6562	9687	6067	3645	30221	1017
Paid up capitals (IDs.)	28923	43366	34013	15549	12813	4728
Consumers:						
No. of Societies	10	8	6	7	7	1
No. of Members	1326	2512	2179	994	2201	8
Paid up capitals (IDs.)	5040	9427	4369	6999	4276	21
Agriculture:						
No. of Societies	298	367	410	473	667	805
No. of Members	39244	47725	54857	63225	82074	110472
Paid up capitals (IDs.)	56377	76167	100746	111216	145925	217074
Productive:						
No. of Societies	1	—	2	1	1	—
No. of Members	14	—	90	70	14	—
Paid up capitals (IDs.)	112	—	879	350	28767	—
Marketing:						
No. of Societies	—	—	—	—	1	—
No. of Members	—	—	—	—	12	—
Paid up capitals (IDs.)	—	—	—	—	120	—

Source: Directorate General of Co-operation.

NO. OF OFFICIALS & OTHER STAFFS OF THE GOVERNMENT & SEMI-GOVERNMENT DEPARTMENTS & TOTAL WAGES & SALARIES PAID DURING THE YEARS 1960—1968

TABLE (113)

Year	No. of officials & other Staffs of the Government & Semi-Govt.			Total Wages & Salaries Paid (ID.)		
	Male	Female	Total	Male	Female	Total
1960	191000	16966	207966	47508569	5643467	53152036
1961	221982	19511	241493	65797915	6810619	72608534
1962	223237	20701	243938	66532220	8021325	74553545
1963	224030	21223	245253	68413138	9315737	77728875
1964	254673	24759	279432	82685448	11585285	94270733
1965	284240	28847	313087	92376508	13903914	106280422
1966	281049	30805	311854	98250480	15194177	113444657
1967	284975	33893	318868	103486662	17826545	121313207
1968	240868	35737	276605	80918074	13581979	94500053

Note: The Difference between numbers & wages & salaries of officials and other staffs in the Government and Semi-Government Departments in 1968 over previous years is due to the fact that data of 1968 are excluding police and Security Persons.

Source: C.S.O. — Dept. of social Statistics.

AMOUNTS SPENT BY THE GOVERNMENT ON PENSIONS FOR
THE YEARS 1960—1970

TABLE (114)

Year	No. of pensioners	Amounts spent on pension in (000'IDs)
1960—1961	34724	6829
1961—1962	40613	7335
1962—1963	44919	8296
1963—1964	50379	9764
1964—1965	56404	10680
1965—1966	59188	11753
1966—1967	62605	12530
1967—1968	69275	14780
1968—1969	75623	15952
1969—1970	83108	18721

Source: Directorate General of Pension

19

INTERNATIONAL DATA

ESTIMATED POPULATION & RATE OF POPULATION INCREASE,
AREA & DENSITY FOR THE WORLD BY MAJOR AREAS & REGIONS
TABLE (115)

Major areas and regions (1)	Adjusted estimates of mid-year population (mill.)				
	1950	1955	1960	1963	
World	2486	2713	2982	3162	
Africa	217	241	270	289	
America(4)	328	368	412	441	
Northern America	166	182	199	208	
Latin America	162	186	213	232	
Asia(5)	1355	1487	1645	1754	
East Asia(6)	657	715	780	822	
South Asia(5)	698	772	865	931	
Europe(7)	392	408	425	437	
Oceania(4)	12.6	14.1	15.8	16.8	
U.S.S.R.	180	196	214	225	
		Annual rate of population increase (%)		Area (000' km)(2)	Density(3)
1965	1969	60-69	63-69	1969	1969
3289	3561	2.0	2.0	135772	26
303	335	2.5	2.5	30313	11
460	500	2.2	2.1	42080	12
214	224	1.4	1.2	21515	10
246	275	2.9	2.9	20565	13
1833	2009	2.2	2.3	27532	73
852	914	1.8	1.8	11757	78
981	1095	2.6	2.7	15775	69
445	458	0.9	0.8	4934	93
17.5	19	2.1	2.1	8511	2
231	240	1.3	1.1	22402	11

1- According to composition of regions.

2- Comprise Land area and inland waters, excluding uninhabited polar regions and some uninhabited islands.

3- Population per each square Kilometre of area.

4- Hawaii, a state of the U.S.A. is included in Northern America instead of Oceania.

5- Excluding the U.S.S.R., but including both the Asian and European portions of Turkey.

6- Excluding the U.S.S.R.

7- Excluding the U.S.S.R. & the European portion of Turkey which is included in South Asia.

Source: United Nations Statistical Yearbook 1970.

INDEX NO. OF GROSS DOMESTIC PRODUCT, EXCLUDING THE SERVICES OF GENERAL GOVERNMENT & OF PRIVATE ORGANIZATIONS,
(1963=100)

TABLE (116) WORLD ECONOMIES (1)

Year	G-D-P excluding Services(2)		Agriculture(3)	Industry (4)	Construction	Transport & Communication	Whole sale & Retail Trade
	Total	Per Capital					
1960	87	92	97	83	90	85	87
1964	107	105	107	108	109	107	107
1965	113	108	106	116	114	114	113
1966	120	113	109	124	120	122	119
1967	125	116	115	130	124	129	124
1968	133	121	117	141	132	139	133
1969	143	127	119	151	142	148	143
CENTRALLY PLANNED ECONOMIES(5)							
1960	86	89	106	78	93	82	91
1964	109	107	115	107	107	109	107
1965	116	113	112	118	114	117	114
1966	125	121	122	128	122	127	117
1967	135	130	123	140	135	140	130
1968	144	137	125	152	148	153	140
1969	152	141	122	163	155	159	150
MARKET ECONOMIES							
1960	87	93	93	86	89	87	87
1964	107	104	103	108	109	106	107
1965	112	107	103	115	113	113	113
1966	118	111	104	123	119	121	119
1967	122	112	111	126	119	125	123
1968	129	116	114	136	126	134	132
1969	140	123	118	146	137	144	142

- 1- Excluding P.R. of China, North Korea, Mongolia & North Vietnam.
2- Gross Domestic Product, Excluding services.
3- Agriculture, forestry, Hunting & Fishing.
4- Mining, manufacturing, electricity, gas & Water. Includes also sanitary services in a number of market economies.
5- Albania, Bulgaria, Czechoslovakia, German Democratic Republic, Hungaria, Poland, Romania, Yugoslavia & Soviet Union.

Source: United Nations—Statistical Yearbook 1970.

WORLD MAIN MINERAL PRODUCTION
(Mill. metric Tons)

TABLE (117)

	1960	1961	1962	1963
Crude Petroleum	1054	1122	1217	1306
Coal	1969	1787	1830	1898
Iron Ore	257	246	252	267
Copper Ore	4	4	5	5
Gold	1044	1080	1152	1202
Lead Ore	2	2	3	3
Manganiste	8	8	9	9
Manganese	5	5	5	6
Silver	6	6	7	7
Tin Concentrate	139	139	144	144
Zinc Ore	3	4	4	4
Natural Gas(*)	468	505	552	604
Salt	84	85	92	96
Phosphate	41	44	46	49
Potash	10	10	10	12
Asbestos	2	2	2	3
Diamonds	28	38	33	37

(*) Natural Gas measured by millard cubic metre.

Source: UN. — Statistical Yearbook 1970.

1964	1965	1966	1967	1968	1969
1410	1511	1642	1760	1924	2072
1966	2012	2047	1949	2011	2064
301	326	340	338	368	390
5	5	5	5	5	6
1247	128	1278	1239	1250	1240
3	3	3	3	3	3
10	11	11	11	11	11
6	7	7	7	7	7
7	7	7	7	7	9
150	155	167	175	185	180
4	4	5	5	5	5
658	705	765	823	891	980
100	109	112	118	127	133
57	63	75	78	85	82
13	14	15	16	16	17
3	3	3	4	3	4
38	37	39	40	44	47

EXPORTS & IMPORTS OF THE WORLD & PRODUCTIVE REGIONS

(Commercial magnitude in mill. US dollars)

TABLE (118)

IMPORTS CIF

1						
		1958	1962	1963		
World(*)		114100	149800	162400		
Developed Regions		73700	100600	110700		
Developing Regions		27800	31500	32800		
Centrally planned Regions		12600	17700	18900		
1964		1965	1966	1967	1968	1969
182000	197500	215700	226600	251800	284700	
124800	136900	151200	159100	178400	204700	
36200	38000	40800	42200	46000	50100	
21000	22600	23700	25300	27400	29900	
2		EXPORTS FOB				
		1958	1962	1963		
World(*)		108200	141500	154100		
Developed Regions		71300	95100	103900		
Developing Regions		24800	29000	31500		
Centrally planned Regions		12100	17400	18700		
1964		1965	1966	1967	1968	1969
172500	186400	203800	214700	239400	272600	
117600	128300	141700	149500	168200	193600	
34600	36400	38900	40300	44200	49300	
20300	21700	23200	24900	27000	29700	

(*) Excluding P.R. of China, Mongolia, North Korea & North Vietnam.

Source: UN — Statistical Yearbook 1970.

TOURISM RESORTS AND REGIONS IN IRAQ

Table (119)

Muhafadha	Resort ² Regions
	Ninevah
	Sersang
	Swara Tuka
	Zaweeta
	Soolaf
	Hamam Al-A'leel
	Ninevah Remains
	Nimrud Remains
	Hadhar Remains (HATRA)
	Arbil
	Salah Al-Din
	Shaqlawa
	Haj Omran
	Gally Ali Beg Falls
	Bekhal Falls
	Sulaimaniya
	Sarchinar
	Dokan Dam Lake
	Derbendikhan Dam Lake
	Kholy Qaradagh
	Diala
	Sudoor
	Baghdad
	Tourist Camp
	Arch of Ctesiphon
	Baghdad Museum

Cont.

Muhafadha	Resort Regions
	Ancient Bazzars Mosques Um Al-Khanazeer Island (Pig Island) Iraqi Museum Arab Antiquities Museum Mustansiriyyi School Abbassid Palace Baghdadi Museum Spiral Minaret
Al-Anbar	Habbaniyah Lake Water-Wheels-Heet
Babylon	Hindiya Barrage Babylon Remains
Waset	Kut Barrage
Maysan	Marsh Regions
Thi-Qar	Al-A'hwat (Marsh lands) Remains of Ur
Kerbela	Holy mosques (Golden Minaret) Holy mosques (Golden Minaret) of Najaf Holy mosques of Kufa Ukhaidhir
Basra	Qurna & Adam's Tree Sindbad Island Palm Tree Woods

236

NO. OF TOURISM INSTALLATIONS BELONGING TO TOURISM &
RESORTS ADMINISTRATION

Table (120)

TOURISM INSTALLATIONS	No.
Hotels and Rest Houses	27 (Comprising 352 Rooms and 693 beds)
Aestivators Buildings	145
Cabins	3
Kopra (Huts)	45
Tourist Camps	1
Casinos	20
Coffee Shops	1
Public Restaurants	2
Shops	3
Swimming Pools	2
Arab Tent Camps	1
Tourism Launch Puts	1
Tourism Beach Marquees (Chardagh)	1

Source: Tourism and Resorts Administration

237

NO. OF VISITORS TO THE IRAQI MUSEUMS

Table (121)

MUSEUMS	1969		1970	
	Iraqis	Foreigners	Iraqis	Foreigners
Iraqi Museum	29092	6273	35818	18132
Arab Antiquities Museum	1086	73	—	—
Mustansiriya School	10587	1409	7162	2392
Abbassid Palace	397	368	—	—
Museum of Babylon	31073	9100	50677	48331
Museum of Samarra	331	207	239	244
Museum of Mosul	6051	1312	3650	1519
Nargal gate Museum	5608*	127	4756	91
Museum of Sulaimaniya	1155	—	1528	59
Museum of Nasiriya (Remains of Ur)	1296	—	12608	1786

TOURISTS ENTERING IRAQ DURING 1966—1971

Table (122)

Year	No. of Tourists
1966	395016
1967	391569
1968	396275
1969	429654
1970	359929
1971	589857

IRAQIS DEPARTING & ENTERING IRAQ DURING 1969—1971

Table (123)

YEAR	Departures	Arrivals	Total
1969	219722	212800	432522
1970	207828	179669	387497
1971	389113	443690	832803

Source: Resorts and Tourism Administration.

21

OTHER INFORMATION

REPRESENTATIONS OF THE IRAQI REPUBLIC ABROAD

Embassy of the
Republic of Iraq,
21 Queen's Gate, London S-W-7,
ENGLAND

Embassy of the Republic of Iraq,
Via Luigi Luciani,
No. 41 (Villino) 00197
ROME, ITALY

Embassy of the Republic of Iraq,
WIEN I
Johannesgasse 26,
VIENNA I/1,
P.O. Box 599,
AUSTRIA

Embassy of the Republic of Iraq,
19 Amaryllidos Street
Psychico
ATHENS
GREECE

Embassy of the Republic of Iraq,
Kommendors . . Gatan 35,
STOCKHOLM O
SWEDEN

Embassy of the Republic of Iraq,
ANKARA, TURKEY

Embassy of India
Iraqi Interests Section,
1801 P Street, N. W.,
Washington, D-C, 20036,
U. S. A.

Ambassade de la Republiqne d'Irak,
24 bis, rue de Berri,
PARIS 8e
FRANCE

Ambassade de la Republique
Irakienne,
155 Boulevard,
Auguste Reyers
BRUXELLES-4
BELGIQUE

Embassy of the Republic of Iraq,
No. 21-22, 1-Chome,
Higashiyama, Meguro-Ku,
TOKYO
JAPAN

Embassy of the Republic of Iraq,
Karlovo nam 19,
PRAHA 2
CZECHOSLOVAKIA

Embassy of the Republic of Iraq,
KHARTOUM, SUDAN

Embassy of the Republic of Iraq,
Kajmakalanska 42,
BELGRADE
YUGOSLAVIA

Embassy of the Republic of Iraq,
Szanto Bela Utca 13,
BUDAPEST 14
HUNGARY

Con.

Embassy of the Republic of Iraq,
Balkan Hotel,
SOFIA·
BULGARIA·

Embassy of the Republic of Iraq,
178—Sector, G—6/3,
ISLAMABAD·
PAKISTAN·

Embassy of the Republic of Iraq,
7, Keffi Street, Ikoyi,
P. O. Box 2859,
LAGOS·
NIGERIA·

Embassy of the Republic of Iraq,
Skatertny Per., 14·
MOSCOW·
U·S·S·R·

Embassy of the Republic of Iraq,
Bd. Dr. Petru Groza No. 18,
BUCHAREST·
RUMANIA·

Embassy of the Republic of Iraq,
Kazimierzowska—14·
WARSAW·
POLAND·

Embassy of the Republic of Iraq,
33 Golf Links,
NEW-DELHI—3·
INDIA·

Embassy of the Republic of Iraq,
Shair Shah Mina,
P. O. Box 523,
KABUL·
AFGHANISTAN·

Embassy of the Republic of Iraq·
No. 2 Shiu Hsueh Nan Chieh,
Chien Kuo Men Wai,
PEKING·
PEOPLE'S REPUBLIC OF CHINA·

Embassy of the Republic of Iraq,
Dae Dong Gang Hotel,
PYONGYANG·
PEOPLE'S DEMOCRATIC
REPUBLIC OF KOREA·

Ambajada del Irak
Calle Velazquez 53,
MADRID—1·
SPAIN·

Ambassade de la
Republique d'Irak,
125, Avenue de la Liberte,
TUNIS·

Embassy of the Republic of Iraq,
Garden City,
P.O. Box 974,
TRIPOLI·
LUBIA·

Con.

Embassy of the Republic of Iraq,
International Life House,
Queensway 12th Floor,
P.O. Box 9213
NAIROBI, KENYA·

Botschaft der Republik Irak,
108 Berlin·
Clara—Zetkin—Str., 97/111
DEUTSCHE DEMOKRATISCHE
REPUBLIK·

Embassy of the Republic of Iraq,
38, Djalan Teuku Umar,
DJAKARTA·
INDONESIA·

Ambassade de la Republique
d'Irak,
6 Avenue de la Victoire
RABAT·
MORACO

Ambassade de la Republique
d'Irak,
4, Rue Arezki Abri—Hydra,
ALGER·
ALGERIE·

Embassy of the Republic of Iraq,
Grove Del Sud Hotel,
MAGADISHU·
SOMALIA·

Embassy of the Republic of Iraq,
Edif. La Lanea,

50 piso, Apt.,
Ave. Libertador·
CARACAS·
VENEZUELA·

Koniglich Afghanische
Botschaft Irakische
Interessenvertretun
53—BONN
Coburger Strasse—19·

Permanent Delegation of the
Republic of Iraq to the United
Nations,
14 East 79th Street,
New York 21, N. Y.,
U·S·E·

Consulate-General of the
Republic of Iraq,
3495 Mountain Street,
Suite 1009
Montreal 109 QUEBEC
CANADA·

Consulate—General of the
Republic of Iraq,
Taksim, Ayazpasa,
Gumussu Palas No. 26/4·
ISTANBUL·
TURKEY·

Permanent Delegation
de la Republique d'Irak,
72 rue de Lausanne 1202,
Geneve·
SUISSE·

Con.

Consulate-General
of the Republic of Iraq,
Panorama 203,
Walkeshwar Road,
Malabar Hill,
BOMBAY—6
INDIA

Embassy of the Republic of Iraq,
C/O, P.O. Box 1038,
Third Floor,
Ceylinco House,
COLOMBO—1
CEYLON

Embassy of the Republic of Iraq,
CAIRO
U.A.R.

Embassy of the Republic of Iraq,
DAMASCUS,
SYRIA

Embassy of the Republic of Iraq,
GIDDA
SAUDI ARABIA

Embassy of the Republic of Iraq,
AMMAN
JORDAN

Embassy of the Republic of Iraq,
KUWAIT

Embassy of the Republic of Iraq,
SANA'A
Peoples Republic of Yeman

Embassy of the Republic of Iraq,
BEIRUT
LEBANON

Consulate-General
of the Republic of Iraq,
HALAB
SYRIA

FOREIGN REPRESENTATIONS IN THE REPUBLIC OF IRAQ

EMBASSY	ADDRESS
Jordan	Karradat Mariam, No. 3, 4/3/11
Spain	Sa'adoun Park, No. 2/162
Afghanistan	Waziriyah, Jamal Al-Din Al-Afghani St. G. D. R.
Indonesia	Masbah Tel. No. 90071
Italy	Masbah 22/9/21
Pakistan	Nidhal St. No. 1/3
United Kingdom	Al-Ukhuwa St. Karradat Mariam
Belgium	Salah Al-Din St. Karkh
Bulgaria	Sa'adoun No. 29'sad' 3/2
Poland	No. 35/1 Karradat Mariam
U.S.S.R.	No. 2/1/27 Masbah, Karradat Al-Sharqiyah, Outer
Turkey	No. 140, Mansour St. Karradat Mariam
Algeria	No. 2/8, Waziriyah
Czechoslovakia	Karradat Mariam
Denmark	Karradat Mariam No. 1/7
Rumania	Alwiyah No. 3—G2/6/33
Sudan	Masbah No. 52/5/35
Saudi Arabia	Masbah No. 13G/9/35
Syria	Waziriyah, Siffi Al-Din Al-Hulli, St. No. 34/2/4 Masbah Square
Sweden	Nidhal St. No. 23A/2, Sa'adoun
Switzerland	Sa'adoun St. No. 3/1/2 Alwiyah
Ceylon	Alwiyah No. 10B/6/12
Peoples' Rep. of China	Mansour St. Karradat Mariam
M.A.R.	2nd St. Karradat Mariam
Vatican	No. 20/4 Karradat Mariam

Con.

EMBASSY	ADDRESS
France	No. 9G/3/1 Kurd Al-Pasha
Finland	No. 37/7/35 Masbah
Democratic Korea	No. 1/7/12 Karradat Mariam
Kuwait	Mansour St. Karradat Mariam
Lebanon	No. 13/21/5/D Hussam Al-Din St. Masbah
Libya	Mansour Town,
Morrocco	No. 4/266 Karradat Mariam
Austria	No. 27/7/35 Aqaba Bin-Nafi Sq. Masbah
India	Taha St. Najeeb Pasha Adhamiyah
Hungary	No. 12/1/22 Karradat Mariam
Holland	No. 28/2 Sa'adoun Park, Nidhal St.
Japan	No. 41/7/35 Masbah
Yemen Arab Republic	No. 2/33/4 Karradat Mariam
Yugoslavia	No. 10/11/1 Bustan Kubba Sa'adoun St.

PAR VALUES OF FOREIGN CURRENCIES AGAINST IRAQI DINAR

Member	Currency	Foreign Currency Units Per ID.	ID. Per Foreign Currency Unit
Afghanistan	Afghani	126.000	0.008
Argentina	Peso	11.200	0.089
Australia	Dollar	2.500	0.400
Austria	Schilling	69.300	0.014
Belgium	Franc	140.000	0.007
Bolivia	Peso Boliviano	33.250	0.030
Brazil	New Cruzeiro	13.524	0.074
Burma	Kyat	13.333	0.075
Canada	Dollar	3.027	0.330
Ceylon	Rupee	16.667	0.060
Chile	Escudo	34.188	0.029
Colombia	Peso	51.800	0.019
Cyprus	Pound	1.167	0.857
Denmark	Krone	21.000	0.048
Dominican	Peso	2.800	0.357
Ecuador	Sucre	70.000	0.014
El Salvador	Colon	7.000	0.143
Ethiopia	Dollar	7.000	0.143
Finland	Markka	11.760	0.085
France	Franc	15.552	0.064
Germany (West)	Deutsche Mark	10.248	0.098
Ghana (Gold Coast)	New Cedi	2.857	0.350
Greece	Drachma	84.000	0.012
Guatemala	Quetzal	2.800	0.357
Haiti	Gourde	14.000	0.071
Iceland	Krona	246.400	0.004

Member	Currency	Foreign Currency Units Per ID·	ID· Per Foreign Currency Unit
India	Rupee	21.000	0.048
Iran	Rial	212.100	0.005
Ireland	Pound	1.167	0.857
Italy	Lira	1.750.000	0.000.571
Jamaica	Dollar	2.333	0.429
Japan	Yen	1.008.000	0.000.992
Jordan	Dinar	1.000	1.000
Kenya	Shilling	20.000	0.050
Kuwait	Dinar	1.000	1.000
Lebanon	Pound	6.136	0.163
Liberia	Dollar	2.800	0.357
Libya	Pound	1.000	1.000
Luxembourg	Franc	140.000	0.007
Malawi	Kwasha	2.333	0.428
Malaysia	Dollar	8.571	0.117
Malta	Pound	1.167	0.857
Mexico	Peso	35.000	0.029
Morocco	Dirham	14.169	0.071
Nepal	Rupee	28.350	0.035
Holland	Guilder (Florin)	10.136	0.099
New Zealand	Dollar	2.500	0.400
Nigeria	Pound	1.000	1.000
Norway	Krone	20.000	0.050
Pakistan	Rupee	13.333	0.075
Panama	Balboa	2.800	0.357
Peru	Sol	75.082	0.013
Philippines	Peso	10.920	0.092
Portugal	Escudo	80.500	0.012

Member	Currency	Foreign Currency Units Per ID·	ID· Per Foreign Currency Unit
Rwanda	Franc	280.000	0.004
Saudi Arabia	Riyal	12.600	0.079
Sierra Leone	Leone	2.333	0.429
Singapore	Dollar	8.571	0.117
Somalia	Somali Shilling	20.000	0.050
South Africa	Rand	2.000	0.500
Spain	Peseta	196.000	0.005.102
Sudan	Pound	0.975	1.026
Swaziland	(South African)Rand	2.000	0.500
Sweden	Krona	14.485	0.069
Syria	Pound	6.136	0.163
Tanzania	Shilling	20.000	0.050
Thailand	Baht	58.240	0.017
Tunisia	Dinar	1.470	0.680
Turkey	Lira	42.000	0.024
Uganda	Shilling	20.000	0.050
M.A.R. (Egypt)	Pound	0.975	1.025
United Kingdom	Pound Sterling	1.167	0.857
United States	Dollar	2.800	0.357
Uruguay	Peso	20.720	0.048
Venezuela	Bolivar	12.558	0.080
Yugoslavia	Dinar	42.000	0.024
Zambia	Kwacha	2.000	0.500

Source: Central Bank of Iraq.

TIME ABROAD
LOCAL STANDARD TIMES AT 12 NOON IN BAGHDAD

Abu Dhabi	+ 1	Oslo	-10
Beirut	-11	Ottawa	- 2
Cairo	-11	Buenos Aires	-12
Amman	-11	Bogota	- 2
Damascus	-11	Tehran	+12. 30
Kuwait	12	Tokyo	+ 6
Bahrain	+ 1	Djakarta	+ 4. 30
Qatar	+ 1	Guatemala	- 3
Aden	12	Delhi	+ 2. 30
Ankara	-11	Karachi	+11
Athens	-11	Lima	- 2
Amsterdam	-10	Lagos	-10
Bangkok	+ 4	London	- 9
Belgrade	-10	Mexico	- 3
Berlin	-10	Madrid	-10
Berne	-10	Manilla	+ 5
Bonn	-10	Moscow	12
Paris	-10	Montevideo	-12
Prague	-10	Washington	- 2
Brussels	-10	Warsawa	-10
Peking	+ 5	Vienna	-10
Bucharest	-11	Havana	- 2
Budapest	-10	Helsinki	-11
Cambrra	+ 7	Rangoon	+ 3. 30
Colombo	+ 2. 30	Rome	-10
Copenhagen	-10	Riodejaneiro	-12
Caracas	- 1. 30	Santiago	- 1
Quieto	- 2	Seoul	+ 6
		Stockholm	-10

(-) Hours slow

(+) Hours Fast

NATIONAL DAYS OF THE WORLD

COUNTRY	OCCASION	DATE
Cameroon	National Day	Jan· 1
Sudan	National Day	Jan· 1
Cuba	National Day	Jan· 2
Burma	National Day	Jan· 4
Australia	Republic Day	Jan· 26
India	National Day	Jan· 26
Ceylon	Independence Day	Feb· 4
Kuwait	National Day	Feb· 25
Morocco	Coronation Day	March 3
Ghana	National Day	March 6
Denmark	King's Birthday	March 11
Tunisia	Independence Day	March 20
Pakistan	National Day	March 23
Greece	Independence Day	March 25
Hungary	Liberation Day	April 4
Senegal	Independence Day	April 5
Syria	Evacuation Day	April 17
Tanzania	Union Day	April 26
Japan	Emperor's Birthday	April 29
Netherlands	Queen's Birthday	April 30
Ethiopia	Independence Day	May 5
Czechoslovakia	Liberation Day	May 9
Norway	National Day	May 17
Argentina	Revolution Day	May 25
Jordan	Independence Day	May 25
Afghanistan	Independence Day	May 27
Tunisia	National Day	June 1

Con.

COUNTRY	OCCASION	DATE
Italy	Republic Day	June 2
Nepal	King's Birthday	June 11
Philippine	National Day	June 13
U-K-	Brithday	June 13
Congo (Kinshasa)	Independence Day	June 30
Holy see	Pope's Coronation	June 30
Canada	National Day	July 1
Somalia	National Day	July 1
Burundi	Independence Day	July 1
Venezuela	National Day	July 5
Mongolia	National Day	July 11
Iraq	National Day	July 14
France	National Day	July 14
Iraq	Anniversary of the Revolution	July 17
Spain	National Day	July 18
Colombia	Independence Day	July 20
Belgium	Independence Day	July 21
Poland	National Day	July 22
U-A-R-	National Day	July 23
Liberia	Independence Day	July 26
Cuba	Anniversary of the Revoition	July 26
Peru	Independence Day	July 28
Switzerland	National Day	Aug. 1
Bolivia	Independence Day	Aug. 6
Ecuador	National Day	Aug. 10
Congo (Brazzaville)	National Day	Aug. 15
Indonesia	Independence Day	Aug. 17
Rumania	Liberation Day	Aug. 23
Uruguay	Independence Day	Aug. 25
Malaysia	National Day	Aug. 31
N- Vietnam	Independence Day	Sept. 2
Brazil	National Day	Sept. 7

254

COUNTRY	OCCASION	DATE
Bulgaria	Liberation Day	Sept. 9
Korea (North)	National Day	Sept. 9
Mexico	National Day	Sept. 16
Chili	Independence Day	Sept. 18
Mali	Independence Day	Sept. 22
Saudi Arabia	National Day	Sept. 23
Yemen	Republic Day	Sept. 26
China (P-R-)	Republic Day	Oct. 1
Nigeria	Independence Day	Oct. 1
Cyprus	Independence Day	Oct. 1
Guinea	Independence Day	Oct. 2
G.D.R.	Republic Day	Oct. 7
Uganda	Independence Day	Oct. 9
Zambia	Natioanl Day	Oct. 24
Unite Nations	United Nations Day	Oct. 24
Austria	Republic Day	Oct. 26
Turkey	Republic Day	Oct. 29
Algeria	Revolution Day	Nov. 1
Panama	National Day	Nov. 3
U-S-S-R-	National Day (Socialist Revolution	Nov. 7
Cambodia	National Day	Nov. 9
Sweden	King's Birthday	Nov. 11
Lebanon	Independence Day	Nov. 22
Mauritania	National Day	Nov. 28
Albania	Liberation Day	Nov. 29
Yugoslavia	Liberation Day	Nov. 29
P- R- of South Yemen	Independence Day	Nov. 30
Thailand	King's Birthlyday	Dec. 5
Finland	Independence Day	Dec. 6
Kenya	Natioanl Day	Dec. 12
Libya	Independence Day	Dec. 24

255

Calendar 1972

JANUARY						
Su	Mo	Tu	We	Th	Fr	Sa
						1
2	3	4	5	6	7	8
9	10	11	12	13	14	15
16	17	18	19	20	21	22
23	24	25	26	27	28	29
30	31					
MARCH						
		1	2	3	4	
5	6	7	8	9	10	11
12	13	14	15	16	17	18
19	20	21	22	23	24	25
26	27	28	29	30	31	
MAY						
	1	2	3	4	5	6
7	8	9	10	11	12	13
14	15	16	17	18	19	20
21	22	23	24	25	26	27
28	29	30	31			
JULY						
						1
2	3	4	5	6	7	8
9	10	11	12	13	14	15
16	17	18	19	20	21	22
23	24	25	26	27	28	29
30	31					
SEPTEMBER						
					1	2
3	4	5	6	7	8	9
10	11	12	13	14	15	16
17	18	19	20	21	22	23
24	25	26	27	28	29	30
NOVEMBER						
		1	2	3	4	
5	6	7	8	9	10	11
12	13	14	15	16	17	18
19	20	21	22	23	24	25
26	27	28	29	30		

FEBRUARY						
Su	Mo	Tu	We	Th	Fr	Sa
	6	7	8	9	10	11
12	13	14	15	16	17	18
19	20	21	22	23	24	25
26	27	28	29			
APRIL						
						1
2	3	4	5	6	7	8
9	10	11	12	13	14	15
16	17	18	19	20	21	22
23	24	25	26	27	28	29
30						
JUNE						
				1	2	3
4	5	6	7	8	9	10
11	12	13	14	15	16	17
18	19	20	21	22	23	24
25	26	27	28	29	30	
AUGUST						
		1	2	3	4	5
6	7	8	9	10	11	12
13	14	15	16	17	18	19
20	21	22	23	24	25	26
27	28	29	30	31		
OCTOBER						
		1	2	3	4	5
6	7	8	9	10	11	12
13	14	15	16	17	18	19
20	21	22	23	24	25	26
27	28	29	30	31		
DECEMBER						
				1	2	
3	4	5	6	7	8	9
10	11	12	13	14	15	16
17	18	19	20	21	22	23
24	25	26	27	28	29	30
31						

Calendar 1973

JANUARY						
Su	Mo	Tu	We	Th	Fr	Sa
	1	2	3	4	5	6
7	8	9	10	11	12	13
14	15	16	17	18	19	20
21	22	23	24	25	26	27
28	29	30	31			
MARCH						
				1	2	3
4	5	6	7	8	9	10
11	12	13	14	15	16	17
18	19	20	21	22	23	24
25	26	27	28	29	30	31
MAY						
		1	2	3	4	5
6	7	8	9	10	11	12
13	14	15	16	17	18	19
20	21	22	23	24	25	26
27	28	29	30	31		
JULY						
		1	2	3	4	5
6	7	8	9	10	11	12
13	14	15	16	17	18	19
20	21	22	23	24	25	26
27	28	29	30	31		
SEPTEMBER						
						1
2	3	4	5	6	7	8
9	10	11	12	13	14	15
16	17	18	19	20	21	22
23	24	25	26	27	28	29
30						
NOVEMBER						
				1	2	3
4	5	6	7	8	9	10
11	12	13	14	15	16	17
18	19	20	21	22	23	24
25	26	27	28	29	30	

FEBRUARY						
Su	Mo	Tu	We	Th	Fr	Sa
	4	5	6	7	8	9
10	11	12	13	14	15	16
17	18	19	20	21	22	23
24	25	26	27	28		
APRIL						
		1	2	3	4	5
6	7	8	9	10	11	12
13	14	15	16	17	18	19
20	21	22	23	24	25	26
27	28	29	30			
JUNE						
						1
	3	4	5	6	7	8
9	10	11	12	13	14	15
16	17	18	19	20	21	22
23	24	25	26	27	28	29
30						
AUGUST						
				1	2	3
4	5	6	7	8	9	10
11	12	13	14	15	16	17
18	19	20	21	22	23	24
25	26	27	28	29	30	31
OCTOBER						
			1	2	3	4
5	6	7	8	9	10	11
12	13	14	15	16	17	18
19	20	21	22	23	24	25
26	27	28	29	30	31	
DECEMBER						
						1
	2	3	4	5	6	7
8	9	10	11	12	13	14
15	16	17	18	19	20	21
22	23	24	25	26	27	28
29	30	31				

1974

JANUARY

Su	Mo	Tu	We	Th	Fr	Sa
		1	2	3	4	5
6	7	8	9	10	11	12
13	14	15	16	17	18	19
20	21	22	23	24	25	26
27	28	29	30	31		

MARCH

					1	2
3	4	5	6	7	8	9
10	11	12	13	14	15	16
17	18	19	20	21	22	23
24	25	26	27	28	29	30
31						

MAY

			1	2	3	4
5	6	7	8	9	10	11
12	13	14	15	16	17	18
19	20	21	22	23	24	25
26	27	28	29	30	31	

JULY

	1	2	3	4	5	6
7	8	9	10	11	12	13
14	15	16	17	18	19	20
21	22	23	24	25	26	27
28	29	30	31			

SEPTEMBER

1	2	3	4	5	6	7
8	9	10	11	12	13	14
15	16	17	18	19	20	21
22	23	24	25	26	27	28
29	30					

NOVEMBER

			1	2	3
4	5	6	7	8	9
10	11	12	13	14	15
16	17	18	19	20	21
22	23	24	25	26	27
28	29	30			

FEBRUARY

Su	Mo	Tu	We	Th	Fr	Sa
					1	2
3	4	5	6	7	8	9
10	11	12	13	14	15	16
17	18	19	20	21	22	23
24	25	26	27	28		

APRIL

	1	2	3	4	5	6
7	8	9	10	11	12	13
14	15	16	17	18	19	20
21	22	23	24	25	26	27
28	29	30				

JUNE

						1
2	3	4	5	6	7	8
9	10	11	12	13	14	15
16	17	18	19	20	21	22
23	24	25	26	27	28	29
30						

AUGUST

					1	2	3
4	5	6	7	8	9	10	
11	12	13	14	15	16	17	
18	19	20	21	22	23	24	
25	26	27	28	29	30	31	

OCTOBER

	1	2	3	4	5	6
7	8	9	10	11	12	13
14	15	16	17	18	19	20
21	22	23	24	25	26	27
28	29	30	31			

DECEMBER

						1
2	3	4	5	6	7	8
9	10	11	12	13	14	15
16	17	18	19	20	21	22
23	24	25	26	27	28	29
30	31					

CONTENTS

Page	Table	
3	Foreward	
5	Abbreviations	
5	Symbols	
	1 - General Information	
9	Geographical outline	
11	Area & boundaries of Iraq	1
12	Length of rivers within the boundaries of Iraq	2
12	Water reservoirs in Iraq	3
13	Dams and Regulators in Iraq	4
14	Temperatures, Rainfall and Humidity	5
16	Yearly pressure average values	6
18	Weights and Measures	
	2 - Population	
23	Estimated population of Iraq & its Increases	7
24	Iraq's population density	8
25	Iraq's population according to residence in rural & urban areas	9
26	Iraq's population distributed according to sex & age groups for 1970	10
27	Gainfully employed population, distributed by economic sectors, 1960-1970	11
	3 - National Income	
31	Iraqi per capita income at current and constant prices	12
32	Expenditure on gross domestic product	13
33	Distribution of gross domestic product by economic sectors at current prices for the years 60-69	14
35	Distribution of gross domestic product by economic sectors at 1966 constant prices for the years 65-1969	15
	4 - Capital Formation	
39	Gross domestic fixed capital formation according to public and private sectors	16

CONTENTS

Page		Table
40	Gross domestic fixed capital formation according to economic activities at current prices	17
42	Gross domestic fixed capital formation according to economic activities at 1966 constant prices	18
<u>5- Index Numbers</u>		
47	Monthly averages of consumers' price index No. in Baghdad City and its environs for 1963—1970	19
48	Monthly averages of wholesale price index No. in Baghdad for 1962—1970	20
49	Index No. of industrial production for 1962—1970	21
50	Index No. of workers in the industrial and constructional sectors	22
52	Index No. of wages in industrial & constructional sectors	23
54	Index No. of the costs and quantities of materials consumed in the constructional sectors	24
56	Index No. of variation in the yield per donum of cultivated lands	25
<u>6- Agriculture</u>		
61	Area of cultivated lands in Iraq	26
62	Principal winter crops	27
64	Principal summer crops	28
66	Dates production	29
67	Tobacco and Tumbak	30
68	Livestock populations in Iraq	31
<u>7- Agrarian reform</u>		
73	Total area of sequestered lands from the beginning of land reform law up to 31/12/1970 according to muhafadha	32
74	Distributed areas & No. of beneficiaries during 59—70	33
75	Areas of land rented, and No. of farmers renting them	34
76	No. of agricultural co-operative societies established in the areas subject to agrarian reform	35
76	Amounts of loans paid to the agricultural co-operative societies during 1964—1970	36

CONTENTS

Page		Table
77	No. of water pumps owned by agricultural co-operative societies at the end of 1970	37
78	Agricultural machines and implements owned by agrarian reform organization up to 31/12/1970	38
<u>8- Industry</u>		
86	Summary of No. of employees, establishments, wages paid, materials used in production & total income of all manufacturing industries in Iraq	39
88	No. of establishments, employees, wages paid, materials used in production & total incomes of small & large scale industries	40
92	No. of establishments, employees, wages paid, materials used in production & total incomes according to Muhafadhas	41
100	No. of establishments, employees, wages paid, materials used in production & total income according to industry-groups	42
110	No. of establishments, employees, wages paid, materials used in production & total income in the government industrial sector	43
112	Manufacturing industries according to size	44
116	Quantities produced for certain commodities	45
<u>9- Oil</u>		
121	Production of crude oil in Iraq	46
122	Production of crude oil by companies & fields during the years 1964—1969	47
123	Producing wells by companies during the years 1964—1969	48
124	Production & disposal of gas by companies & fields during the years 1964—1969	49
125	Quantity & value of crude oil exports according to countries during 1969—1970	50
126	Quantities of refineries principal products (in long ton) during the year 1970	51
127	Oil products sold in Iraq	52
128	Exports of oil products	53
129	Wages paid to employees (National & Foreign) of the oil companies in Iraq for the years 1961—1969	54

CONTENTS

Page		Table
132	Average of wages paid by the Iraqi petroleum companies to all employees	55
134	Prices of some petroleum products in Iraq	56
134	Prices of some petroleum products in Iraq	57
10- Construction		
137	Total No. of licences for building and repairs and approximate cost	58
138	Total No. of private licences for buildings (under construction and completed) for the years 1961-1969	59
139	Government & private construction, average No. of employees, wages paid & cost of materials used for the years 1961-1969	60
11- Transport and communications		
143	Public roads & side roads in Iraq	61
143	No. of cars in Iraq during 1960-1970	62
144	No. of passengers, their fees & No. of passengers' kilometres for the years 1960-1970	63
146	No. of stations and the length of the Railway lines	64
147	Goods carried by Railways	65
148	No. of flight in Baghdad & Basra airports of all airlines during the years 1961-1970	66
150	No. of embarked, disembarked & transit passengers in the airports of Baghdad & Basra	67
151	No. of G-R-T. & N-R-T. of ships entered the ports of Basra and Umkusr during 1960-1970	68
151	Summary of Iraqi Line's vessels	69
12- Foreign Trade Statistics		
155	Balance of trade (except exports of crude oil)	70
155	Imports, exports, transit & G-N-P. (current prices)	71
156	Exports to main countries & the rest of the world	72
158	Iraq's imports according to geographical distribution	73
162	Iraq's principal exports for 1970	74

CONTENTS

Page		Table
163	Iraq's principal imports for 1970	75
13- Banks, Insurance & Companies		
168	Consolidated statement of the Central Bank of Iraq	76
170	Consolidated statement of Commercial Banks	77
172	Consolidated statement of Specialized Banks	78
174	Balances of Loans extended by specialized Banks	79
175	Premiums of General Insurance Issued	80
176	Individual Life Insurance	81
176	Total payable amounts of claims for individual life insurance (ID)	82
177	Group life insurance	83
177	Distribution of paid capital of the stocks & limited liabilities Cos. according to economic sectors	84
178	No. of the stocks & limited liabilities Cos.	85
14- Public Finance		
181	The budgetary situation	86
182	Balance of payments during 1960-1969	87
185	Amounts & percentage of income tax payable	88
185	Income tax, Legacy & Inheritance tax payable	89
186	Iraqi public debt	90
15- Economic Plans & National Development Plan		
191	Expenditure of the provisional economic plan	91
191	Expenditure of the Detailed economic plan	92
192	Expenditure of five economic plan	93
193	The National Development plan for the fiscal years 1970-74 government sector's investment allocations	94
193	Investments in the self-financed public sector	95
194	Sources of financing investments in the central government sector	96
16- Culture & Education		
197	No. of pupils & teachers in the primary schools	97
198	No. of students in the secondary schools	98

CONTENTS

Page		Table
199	No. of graduates from the secondary schools	99
200	No. of students admitted & graduated from Universities	100
204	No. of admitted & graduated students from the primary teachers training schools	101
205	No. of students in the vocational schools	102
206	Summary of the progress of education in Iraq during the years 1960/61—1969/70	103
	<u>17- Health</u>	
211	No. of hospitals, dispensaries & other health centres	104
212	Medical & para medical professions in Iraq	105
213	Vital statistics-live births & deaths — 1970	106
214	Rate of birth, death & natural increase per thousand of inhabitant population.	107
	<u>18- Social statistics</u>	
217	No. of unions their branches & members in Iraq	108
217	No. of industrial & commercial enterprises liable to labour law	109
218	No. of persons received social insurance benefits	110
221	No. of persons received benefits from the social service centres	111
222	Co-operatives, their members & paid up capitals	112
223	No. of officials and other staffs of the government and semi-government Depts. & total wages & salaries paid during the years 1960—1968	113
224	Amounts spent by the government on pensions	114
	<u>19- International Data</u>	
227	Estimated population & rate of population increase, area and Density for the world by major areas & regions	115
228	Index No. of gross domestic product, excluding the service of general government & of private organizations	116
230	World main mineral production	117

CONTENTS

Page		Table
232	Exports & imports of the world & productive Regions	118
	<u>20- Tourism</u>	
235	Tourism resorts and regions in Iraq	119
237	No. of tourism installations Belonging to tourism & resorts Administration	120
238	No. of visitors to the Iraqi Museums	121
239	Tourists entering Iraq during 1966—1971	122
239	Iraqis departing & entering Iraq 1969—1971	123
	<u>21- Other Information</u>	
243	Representations of the Iraqi Republic abroad	
247	Foreign representations in the Republic of Iraq	
249	Par values of foreign currencies against Iraqi Dinar	
252	Time abroad, local standard times at 12 noon in Baghdad	
253	National Days of the World	
256	Calendar — 1972	
257	Calendar — 1973	
258	Calendar — 1974	

CORRECTION

Page	Table	Details	Wrong	Correct
62	27		Grops	Crops
95	41	No. of Employees, Diala, 69	1443	1943
103	42	Value of sales, Beverages	110545	10545
125	50	Uruguay, Oil exported - 1969 (In Ton)	197	167
207	103	Pupils in Primary schools, 1969/70	10404970	1040970
213	*106	Ninevah - Live births	13908	23417
"	"	Dhok, Live births	1290	290
"	"	Muthanna, Live births	1794	794
"	"	Basra, Live births	9307	9900
"	"	Total	130265	138367

Note : After the Completion of Printing this Pocket Book, the Ministry of Health informed us of the alteration data in Table 106 above

CORRECTIONS

Wrong	Correct	Page	Table	Notes
484000	434000	24	8	Total area
718548	713548	26	10	1 - 4
41.4	91.4	39	16	1969 - Public Sector
103.7	103.2	47	19	68 - Fuel
103.0	100.3	47	19	66 - General
113.2	107.9	53	23	67 - oil Refining
114.3	108.2	53	23	68 - " "
89.4	101.6	55	24	1968 - Quantity (2)
2029	2529	147	65	60/61 - Q. goods
286721	285721	198	98	68/69 - Total
7132	7191	205	102	69/70 - Male

Page 230 Table 117.

Notes : Gold measured by thousand kgs.

Silver measured by thousand M.Tons.

Tin measured by thousand M.Tons.

Diamonds measured by mill - m. Carats.

30 0111103 1

EXETER
UNI
1955

